

L. A. Stevens & Associates, Inc.
Professional Land Surveyors
Novato, California

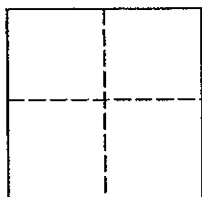
Lands of Miller
Job #: 02-640

CORNER RECORD

Document Number 176-031-01

Vicinity of San Anselmo , County of Marin , California

Brief Legal Description: Lot 43, Map Sleepy Hollow Knolls, Unit 2, recorded in Book 8 at Page 101 of Marin County Records



CORNER TYPE

Government Corner ☐ Control ☐

Meander ☐ Property ☒

Rancho ☐ Other ☐

Date of Survey August 28, 2002

COORDINATES (Optional)

N _____

E _____

Zone _____ NAD27 ☐ NAD83 ☐

NAD 83 Epoch _____

Elev. _____

Vert. Datum: NGVD29 ☐ NAVD88 ☐

Meas. Units: Metric ☐ Imperial ☒

Corner - Left as found ☐ Found and tagged ☐ Established ☒ Reestablished ☐ Rebuilt ☐

Identification and type of corner found: Evidence used to identify or procedure used to establish or reestablish the corner:
See Sheet 2 of 2.

A description of the physical condition of the monument as found and as set or reset:
See Sheet 2 of 2.

SURVEYOR'S STATEMENT

This Corner Record was prepared by me or under my direction in conformance with

The Land Surveyor's Act on September 9, 2002.

Signed [Signature] P.L.S. 6649



COUNTY SURVEYOR'S STATEMENT

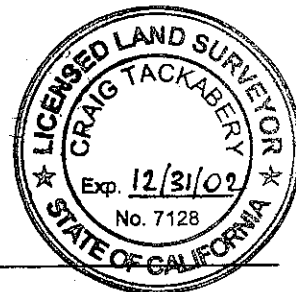
This Corner Record was received SEPTEMBER 12, 2002

and examined and filed OCTOBER 4, 2002

Signed [Signature] P.L.S. or R.G.E. No. 7128

Title DEPUTY

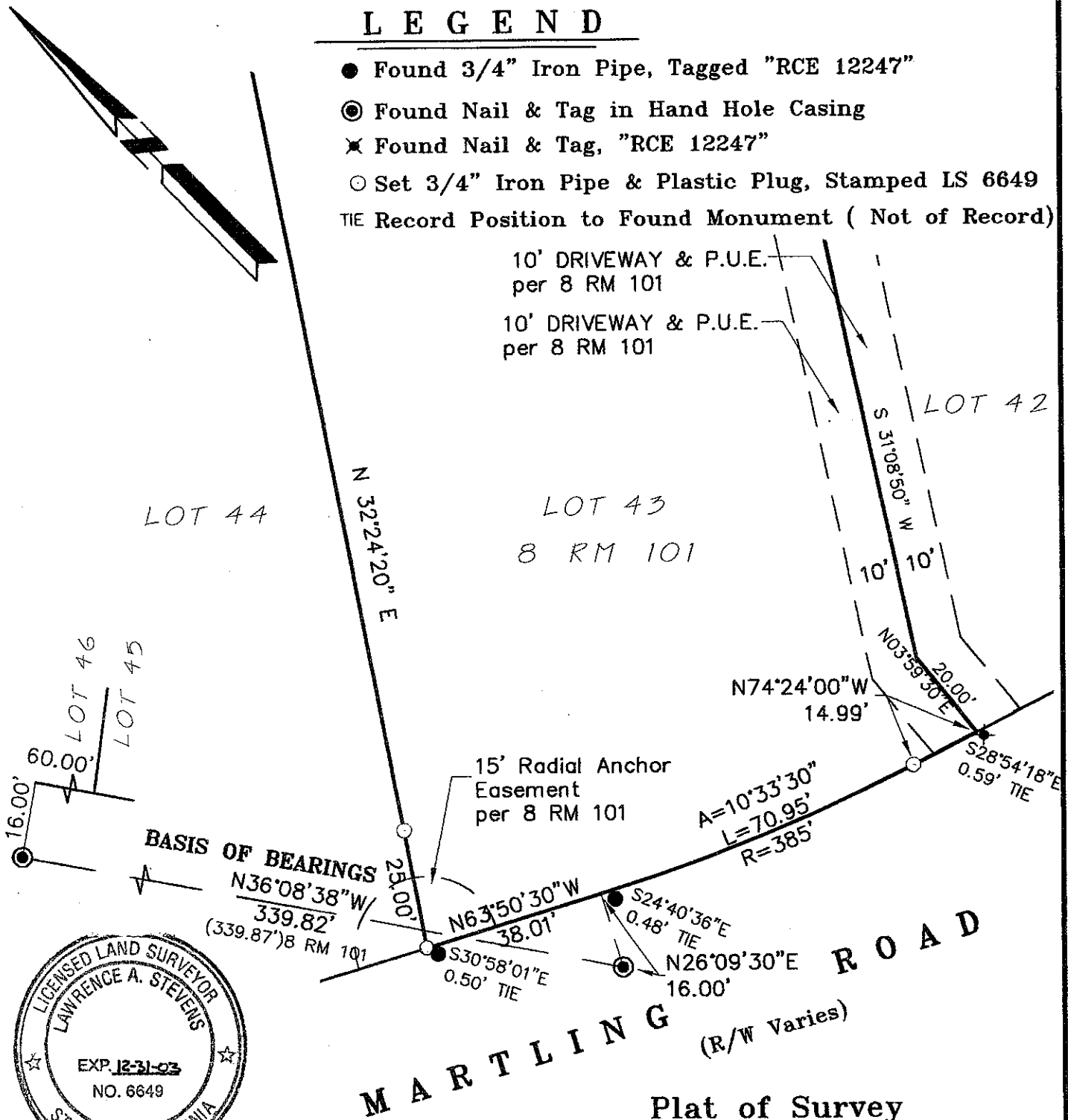
County Surveyors' Comment _____



All distances shown are in feet and decimals thereof

LEGEND

- Found 3/4" Iron Pipe, Tagged "RCE 12247"
- ⊙ Found Nail & Tag in Hand Hole Casing
- ✕ Found Nail & Tag, "RCE 12247"
- Set 3/4" Iron Pipe & Plastic Plug, Stamped LS 6649
- TIE Record Position to Found Monument (Not of Record)



MARTLING ROAD
(R/W Varies)

Plat of Survey Lands of Miller

(Lot 43, 8 RM 101)

San Anselmo Marin County California
Scale: 1" = 30' August 2002

L.A. Stevens & Associates, Inc.

Professional Land Surveyors • (415) 382-8321
1132 Bel Marin Keys Blvd. • Novato, CA 94949

Lawrence A. Stevens, PLS 6649
my license expires 12/31/03

Job # 02-640

Page 2 Of 2