

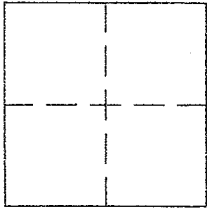
CORNER RECORD

Document Number APN 175-360-07

City of SAN RAFAEL

County of MARIN, California

Brief Legal Description LOT 4, 22 PM 56, A PORTION OF PARCEL 4, 15 RM 22



CORNER TYPE

Government Corner  Control   
Meander  Property   
Rancho  Other   
Date of Survey SEPTEMBER 12, 2016

COORDINATES (Optional)

N. \_\_\_\_\_  
E. \_\_\_\_\_  
Zone \_\_\_\_\_ NAD27  NAD83   
NAD83 Epoch \_\_\_\_\_  
Elev. \_\_\_\_\_  
Vert. Datum: NGVD29  NAVD88   
Meas. Units: Metric  Imperial

Corner - Left as found  Found and tagged  Established  Reestablished  Rebuilt

Identification and type of corner found: Evidence used to identify or procedure used to establish or reestablish the corner:

FOUND STANDARD STREET MONUMENTS AS SHOWN ON 15 RM 22 AND 22 PM 56  
AND ON REVERSE

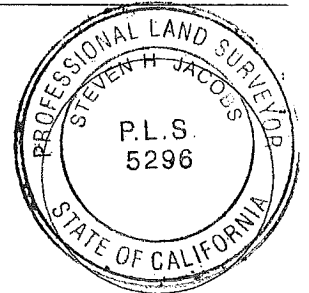
A description of the physical condition of the monument as found and as set or reset:

SET REBARS & CAPS, PLS 5296 , AS SHOWN ON REVERSE.

SURVEYOR'S STATEMENT

This Corner record was prepared by me or under my direction in conformance with the Land Surveyors Act on OCTOBER 2, 2016

Signed [Signature] P.L.S. or R.C.E. No. PLS 5296



COUNTY SURVEYOR'S STATEMENT

This Corner Record was received OCTOBER 13, 2016

and examined and filed 1/18/2017

Signed T.W. Park P.L.S. or R.C.E. No. 8176

Title COUNTY SURVEYOR



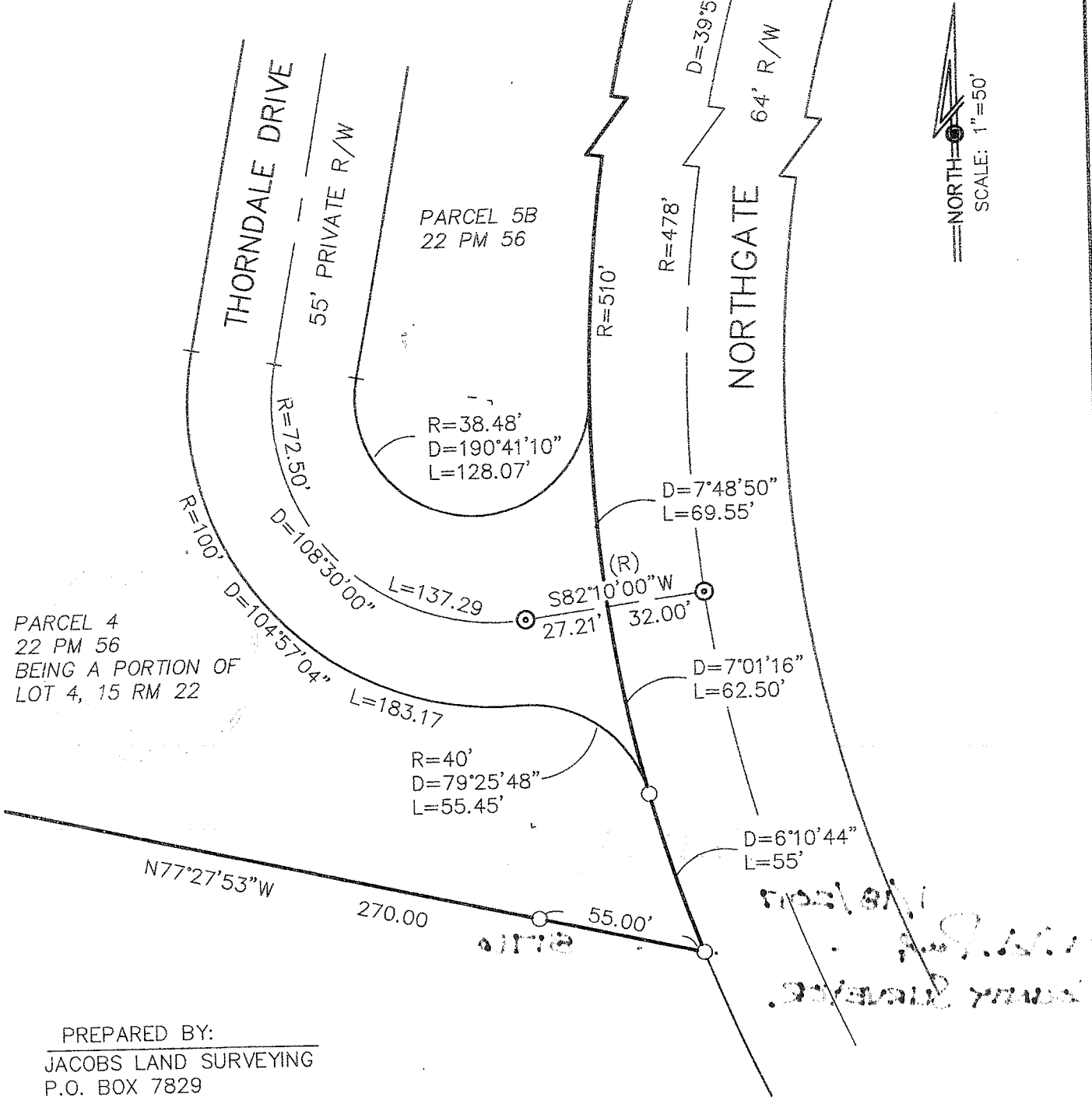
County Surveyor's Comment \_\_\_\_\_

**REFERENCES**

R1 15 RM 22  
 R2 22 PM 56  
 ALL DIMENSIONS PER  
 R1 UNLESS NOTED

**LEGEND**

- ⊙ FND. STD. ST. MON PER R1
- SET REBAR & CAP PLS 5296
- M MEASURED
- (R) RADIAL BEARING



PREPARED BY:  
 JACOBS LAND SURVEYING  
 P.O. BOX 7829  
 COTATI, CA. 94931  
 415 454-2235

JOB NO.15-1409-M FB#75  
 DWG FILE: 2016/OCT/EVILLACR2