

L. A. Stevens & Associates, Inc.
Professional Land Surveyors
Novato, California

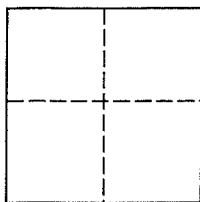
Lands of Nance
Job #: 05-870

CORNER RECORD

Document Number 175-302-13

City of San Rafael, County of Marin, California

Brief Legal Description: Being Lot 9 of that certain map entitled "Map of Terra Linda No. 14, in the City of San Rafael, California, ", filed for record August 19, 1960 in Volume 10 of Maps at Page 73, Marin County Records.



CORNER TYPE

Government Corner Control

Meander Property

Rancho Other

Date of Survey March 29, 2004

COORDINATES (Optional)

N _____

E _____

Zone _____ NAD27 NAD83

NAD 83 Epoch _____

Elev. _____

Vert. Datum: NGVD29 NAVD88

Meas. Units: Metric Imperial

Corner - Left as found Found and tagged Established Reestablished Rebuilt

Identification and type of corner found: Evidence used to identify or procedure used to establish or reestablish the corner:
See Page 2 of 2

A description of the physical condition of the monument as found and as set or reset:
See Page 2 of 2

SURVEYOR'S STATEMENT

This Corner Record was prepared by me or under my direction in conformance with

The Land Surveyor's Act on May 12, 2005.

Signed [Signature] P.L.S. 6649



COUNTY SURVEYOR'S STATEMENT

This Corner Record was received MAY 23, 2005

and examined and filed JULY 20, 2005

Signed [Signature] P.L.S. or R.C.E. No. 7128

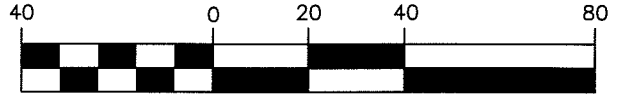
Title COUNTY SURVEYOR

County Surveyors' Comment _____

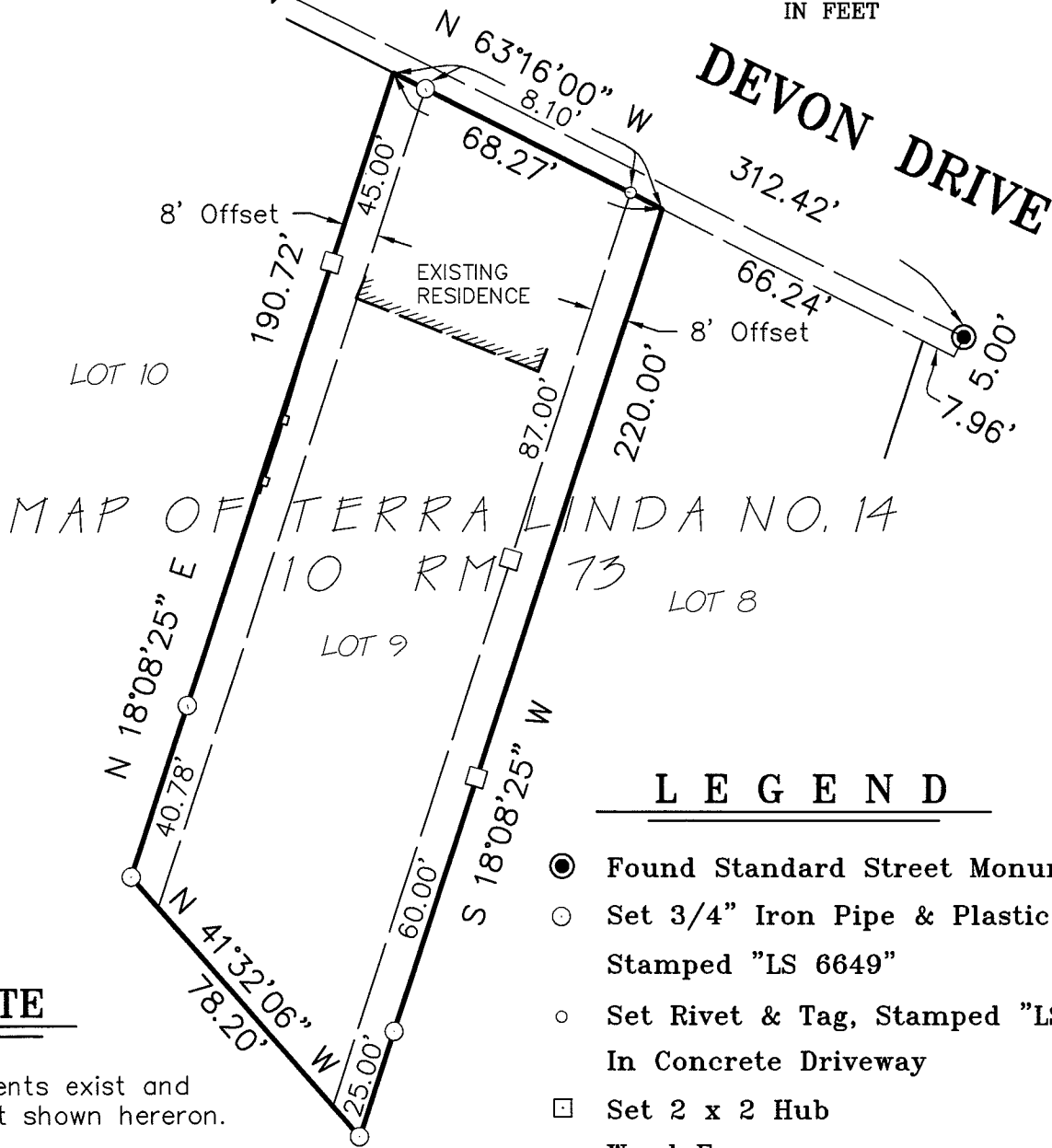


All distances shown are in feet and decimals thereof

GRAPHIC SCALE



IN FEET



MAP OF TERRA LINDA NO. 14
10 RM 73

LEGEND

- Found Standard Street Monument
- Set 3/4" Iron Pipe & Plastic Plug, Stamped "LS 6649"
- Set Rivet & Tag, Stamped "LS 6649" In Concrete Driveway
- Set 2 x 2 Hub
- Wood Fence

NOTE

Easements exist and are not shown hereon.



Plat of Survey Lands of Nance

(Lot 9, 10 RM 73)

San Rafael Marin County California
Scale: 1" = 40' May 2005

L.A. Stevens & Associates, Inc.

Professional Land Surveyors * (415) 382-7713
7 Commercial Blvd., Suite 1 * Novato, CA 94949

Lawrence A. Stevens, PLS 6649
my license expires 12/31/05

Job # 05-870

Page 2 Of 2