

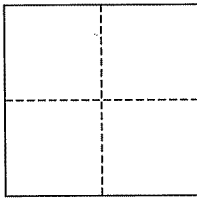
CORNER RECORD

Document Number AP# 175-292-18

City of San Rafael

County of Marin, California

Brief Legal Description Lot 8, 10 RM 34



CORNER TYPE

Government Corner Control
Meander Property
Rancho Other
Date of Survey May 3, 2007

COORDINATES (Optional)

N. _____
E. _____
Zone _____ NAD27 NAD83
NAD83 Epoch _____
Elev. _____
Vert. Datum: NGVD29 NAVD88
Meas. Units: Metric Imperial

Corner- Left as found Found and tagged Established Reestablished Rebuilt

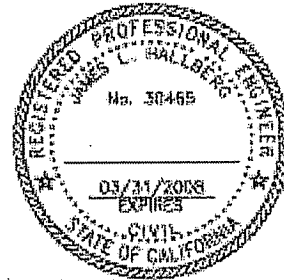
Identification and type of corner found: Evidence used to identify or procedure used to establish or reestablish the corner:
The Basis of Bearing was between the Standard Street Monument at the intersection of Golden Hinde
Blvd. and Drakes cove, and the Standard Street Monument on Drakes Cove bearing S52°17'00'E, 83.00'.

A description of the physical condition of the monument as found and as set or reset: Survey markers were set as
shown upon this Corner Record

SURVEYOR'S STATEMENT

This corner Record was prepared by me or under my direction in conformance with
the Land Surveyor's Act on May 4, 2007

Signed [Signature] P.L.S. or R.C.E. No. 30465



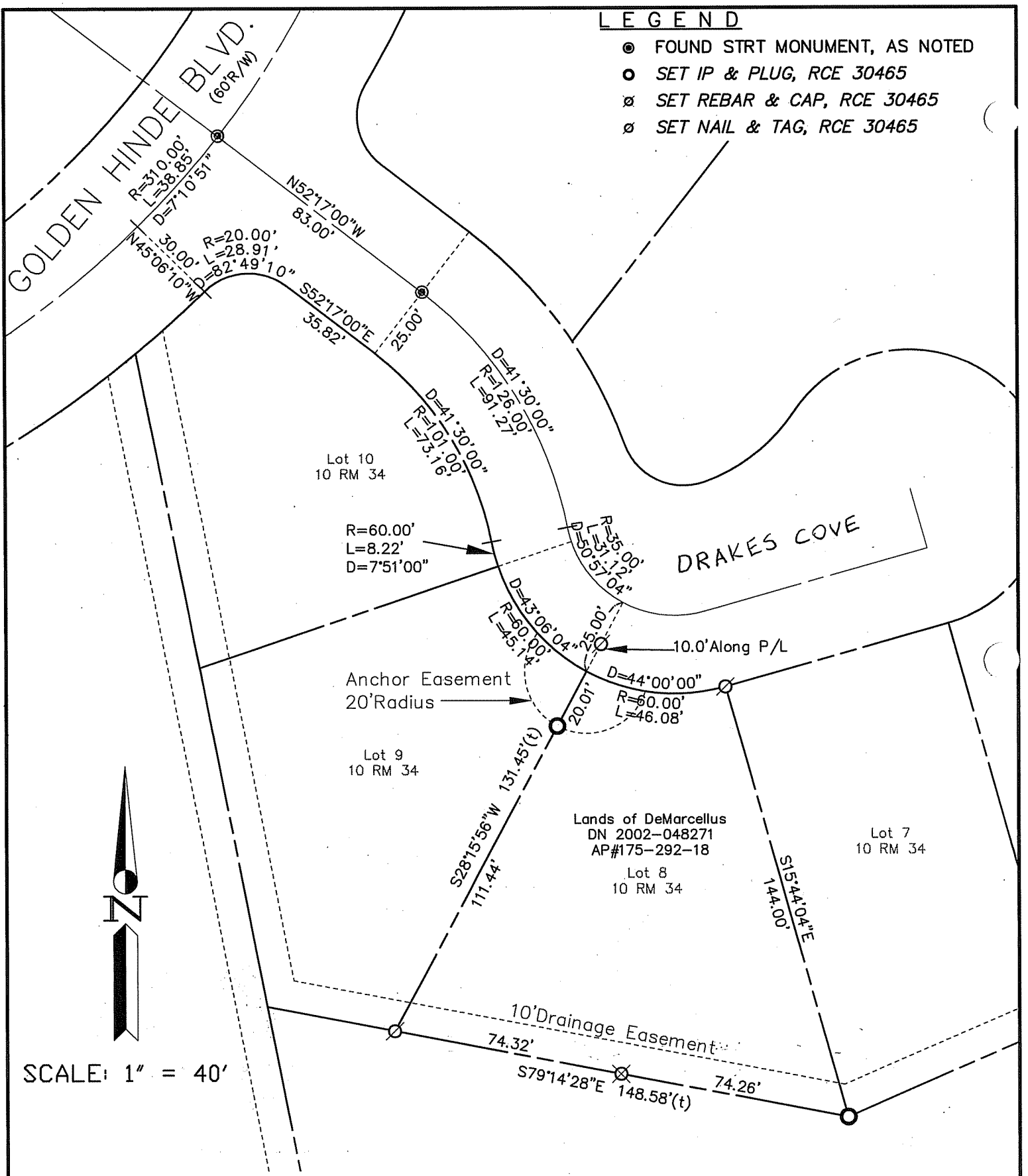
COUNTY SURVEYOR'S STATEMENT

This Corner Record was received MAY 9, 2007
and examined and filed JUNE 14, 2007

Signed [Signature] P.L.S. or R.C.E. No. 7128
Title COUNTY SURVEYOR



County Surveyor's Comment _____



LEGEND

- FOUND STRT MONUMENT, AS NOTED
- SET IP & PLUG, RCE 30465
- ⊗ SET REBAR & CAP, RCE 30465
- ⊗ SET NAIL & TAG, RCE 30465



SCALE: 1" = 40'

Note: All distances are in feet and decimals thereof.

SHEET	1	OF	1
SCALE:	1" = 40'	DESIGN:	P.R.
DATE:	May. 2007	DRAWN:	P.R.
FILE:	2007-075	CHECKED:	J.L.H
2007-075\DWG\BAS-BNDY.DWG,COR-REC			

J.L. ENGINEERING
 CIVIL ENGINEERS—LAND SURVEYORS
 1539 4th ST., SAN RAFAEL, CA. 94901 (415) 457-6647

Corner Record
 Lands of DeMarcellus - 12 Drakes Cove
 APN 175-292-18, San Rafael, Marin County, CA