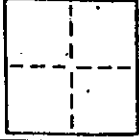


A. P. #175-242-04

CORNER RECORD

COUNTY OF _____ T. _____ R. _____ MERIDIAN CALIFORNIA
 CORNER TYPE: GOVT. CORNER MEANDER RANCHO CONTROL OTHER
 CORNER IDENTIFICATION — DATE OF VISIT _____ 19____



CORNER — LEFT AS FOUND FOUND AND TAGGED REESTABLISHED OBLITERATED CORNER RESULT

PHYSICAL DESCRIPTION OF CORNER FOUND, EVIDENCE AND METHOD USED TO IDENTIFY OR REESTABLISH

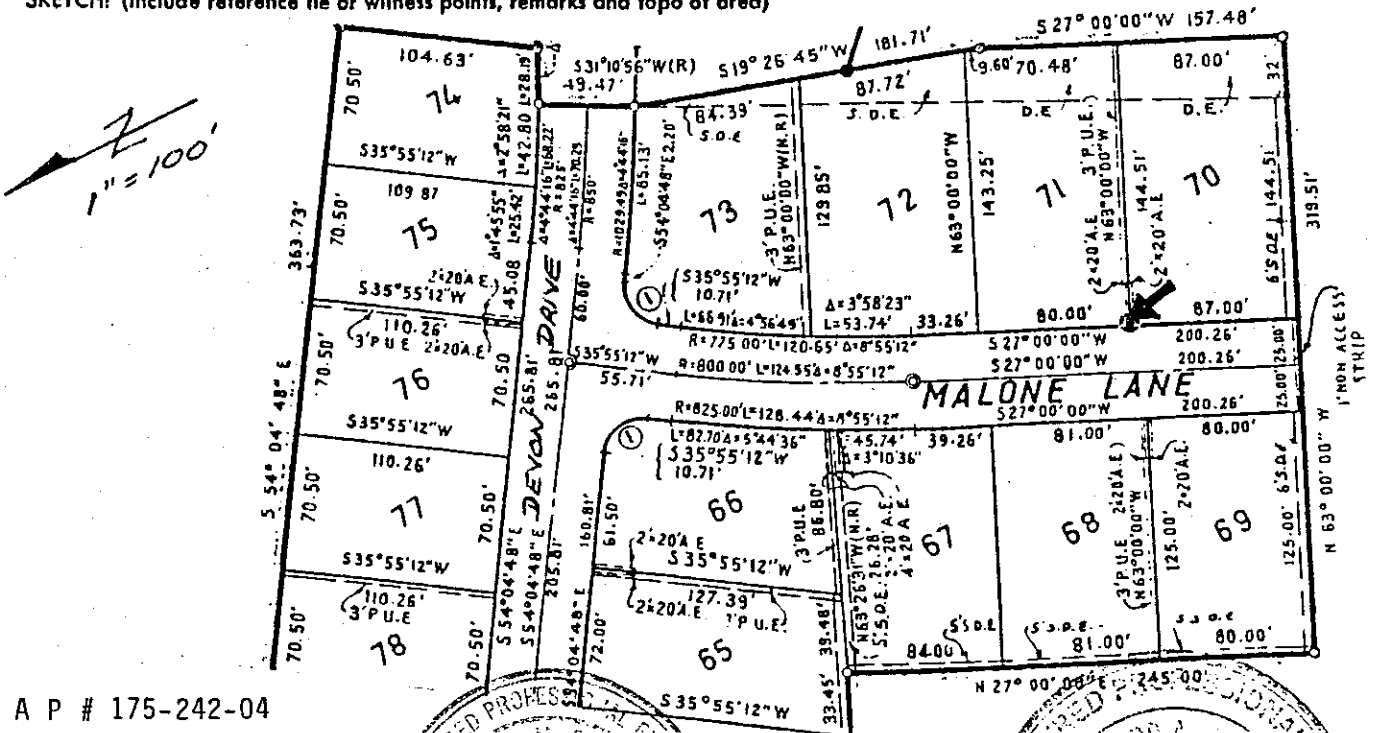
Found Standard City Monuments as shown on the Map of Terra Linda Unit 17
 (11 Maps 9) Marin County Records

PHYSICAL DESCRIPTION OF MONUMENTS REBUILT OR PERPETUATED

● indicates 3/4 inch iron pipe and tag, RCE 17,486 set

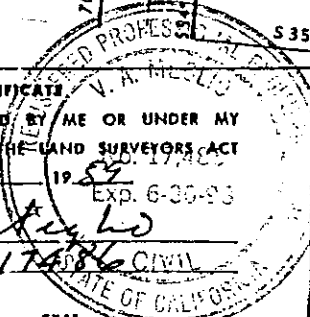
CALIFORNIA COORDINATE SYSTEM ORDER: FIRST SECOND THIRD
 STATIONS USED: NGS (USC & GS) STATE COUNTY OTHER STATION _____ STATION _____
 ZONE _____ ELEVATION _____ NORTHINGS (Y) _____ EASTINGS (X) _____

SKETCH: (Include reference tie or witness points, remarks and topo of area)

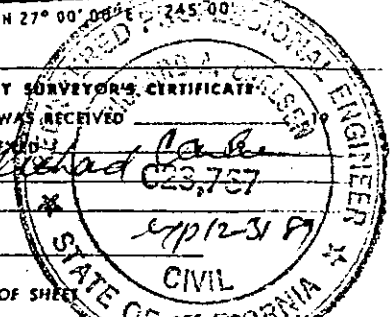


A P # 175-242-04

SURVEYOR'S CERTIFICATE
 THIS CORNER RECORD WAS PREPARED BY ME OR UNDER MY DIRECTION IN CONFORMANCE WITH THE LAND SURVEYORS ACT ON _____ 19____
 SIGNED: V.A. McLeod
 L.S. or R.C.E. No.: RCE 17486

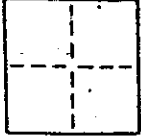


COUNTY SURVEYOR'S CERTIFICATE
 THE CORNER RECORD WAS RECEIVED AND EXAMINED AND FOUND CORRECT BY: Richard C. B...
 TITLE: Professional Engineer
 DOCUMENT No. _____
 STATEMENT ON BACK OF SHEET



CORNER RECORD

COUNTY OF _____ T. _____ R. _____ MERIDIAN CALIFORNIA
 CORNER TYPE: GOVT. CORNER MEANDER RANCHO CONTROL OTHER
 CORNER IDENTIFICATION — DATE OF VISIT _____ 19____



CORNER — LEFT AS FOUND FOUND AND TAGGED REESTABLISHED OBLITERATED CORNER REBUILT

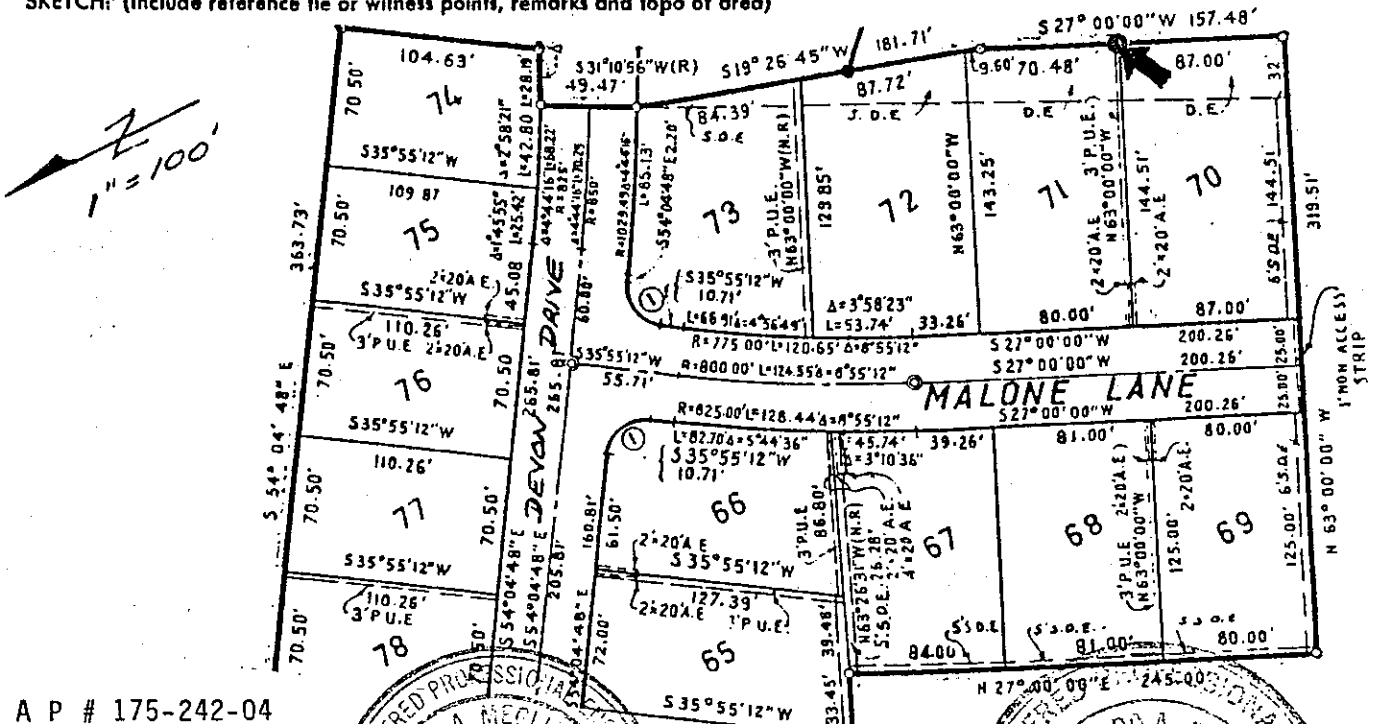
PHYSICAL DESCRIPTION OF CORNER FOUND; EVIDENCE AND METHOD USED TO IDENTIFY OR REESTABLISH
 Found Standard City Monuments as shown on the Map of Terra Linda Unit 17
 (11 Maps 9) Marin County Records

PHYSICAL DESCRIPTION OF MONUMENTS REBUILT OR PERPETUATED

- indicates 3/4 inch iron pipe and tag, RCE 17,486 set

CALIFORNIA COORDINATE SYSTEM ORDER: FIRST SECOND THIRD
 STATIONS USED: NGS (USC & GS) STATE COUNTY OTHER STATION _____ STATION _____
 ZONE _____ ELEVATION _____ NORTHINGS (Y) _____ EASTINGS (X) _____

SKETCH: (Include reference tie or witness points, remarks and topo of area)



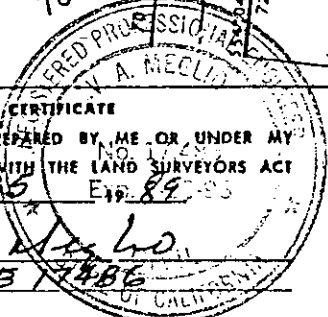
A P # 175-242-04

SURVEYOR'S CERTIFICATE

THIS CORNER RECORD WAS PREPARED BY ME OR UNDER MY DIRECTION IN CONFORMANCE WITH THE LAND SURVEYORS ACT ON Sept 6 1989

SIGNED: [Signature]

L.S. or R.C.E. No. 175-242-04



COUNTY SURVEYOR'S CERTIFICATE

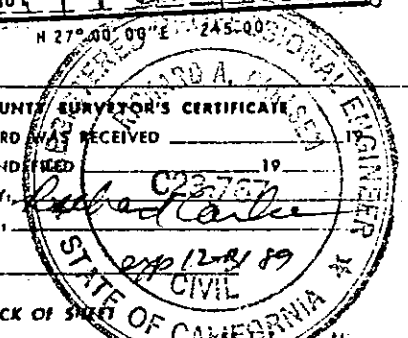
THE CORNER RECORD WAS RECEIVED AND EXAMINED AND IS

BY: [Signature] 1989

TITLE:

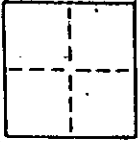
DOCUMENT No. _____

STATEMENT ON BACK OF SALES OF CALIFORNIA



CORNER RECORD

COUNTY OF _____ T. _____ R. _____ MERIDIAN CALIFORNIA
 CORNER TYPE: GOVT. CORNER MEANDER RANCHO CONTROL OTHER
 CORNER IDENTIFICATION — DATE OF VISIT _____ 19____



CORNER — LEFT AS FOUND FOUND AND TAGGED REESTABLISHED OBLITERATED CORNER REBUILT

PHYSICAL DESCRIPTION OF CORNER FOUND, EVIDENCE AND METHOD USED TO IDENTIFY OR REESTABLISH

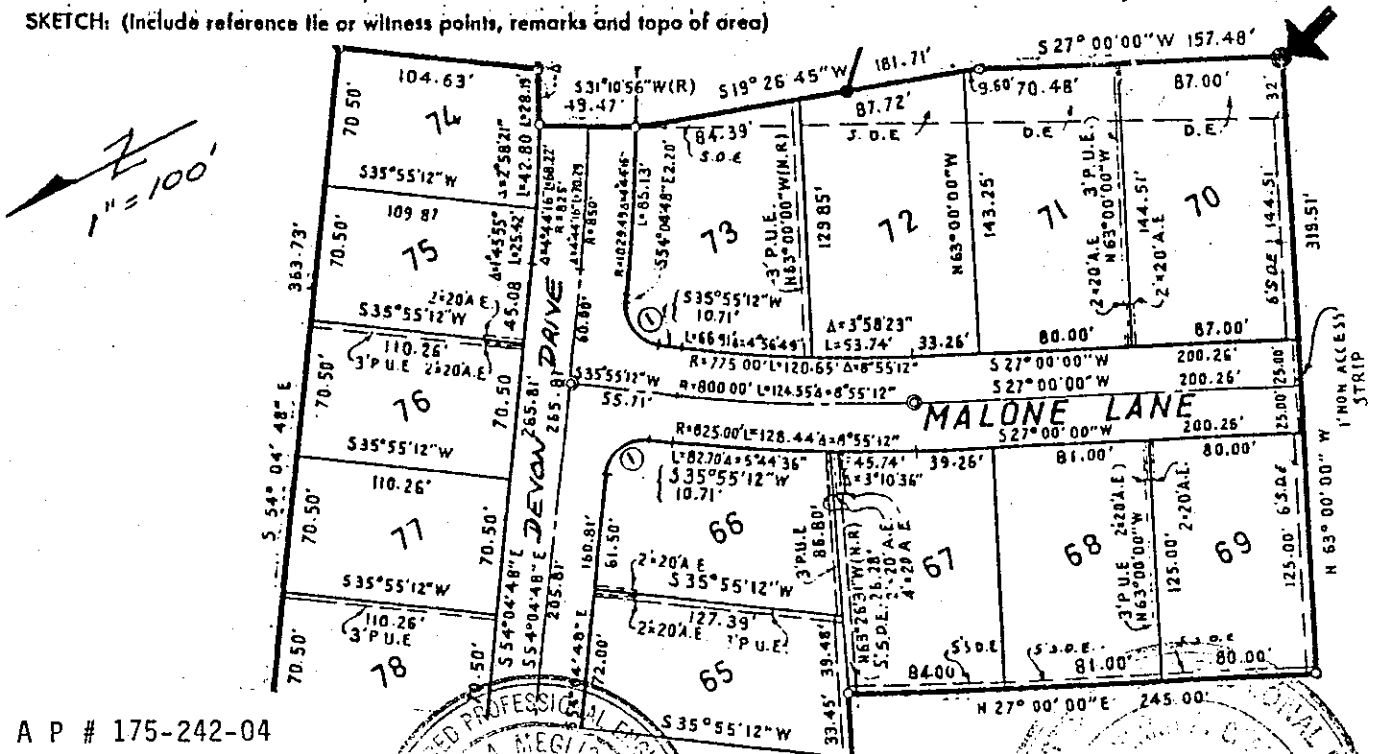
Found Standard City Monuments as shown on the Map of Terra Linda Unit 17
 (11 Maps 9) Marin County Records

PHYSICAL DESCRIPTION OF MONUMENTS REBUILT OR PERPETUATED

● indicates 3/4 inch iron pipe and tag, RCE 17,486 set

CALIFORNIA COORDINATE SYSTEM ORDER: FIRST SECOND THIRD
 STATIONS USED: NGS (USC & GS) STATE COUNTY OTHER STATION _____ STATION _____
 ZONE _____ ELEVATION _____ NORTHINGS (Y) _____ EASTINGS (X) _____

SKETCH: (Include reference tie or witness points, remarks and topo of area)

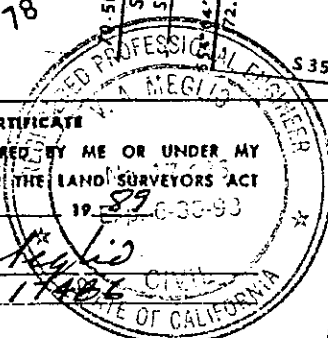


A P # 175-242-04

SURVEYOR'S CERTIFICATE

THIS CORNER RECORD WAS PREPARED BY ME OR UNDER MY DIRECTION IN CONFORMANCE WITH THE LAND SURVEYORS ACT ON Sept 5 1989 6-30-93

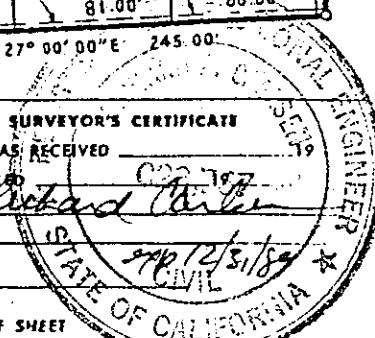
SIGNED: V.A. Maglio
 I.S. or R.C.E. No.: 110017486



COUNTY SURVEYOR'S CERTIFICATE

THE CORNER RECORD WAS RECEIVED AND EXAMINED AND FILED BY: Robert Carter 9/12/89

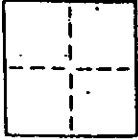
TITLE: _____ ID: _____
 DOCUMENT No. _____



STATEMENT ON BACK OF SHEET

CORNER RECORD

COUNTY OF _____ T. _____ R. _____ MERIDIAN CALIFORNIA
 CORNER TYPE: GOVT. CORNER MEANDER RANCHO CONTROL OTHER
 CORNER IDENTIFICATION — DATE OF VISIT _____ 19____



CORNER — LEFT AS FOUND FOUND AND TAGGED REESTABLISHED OBLITERATED CORNER REBUILT

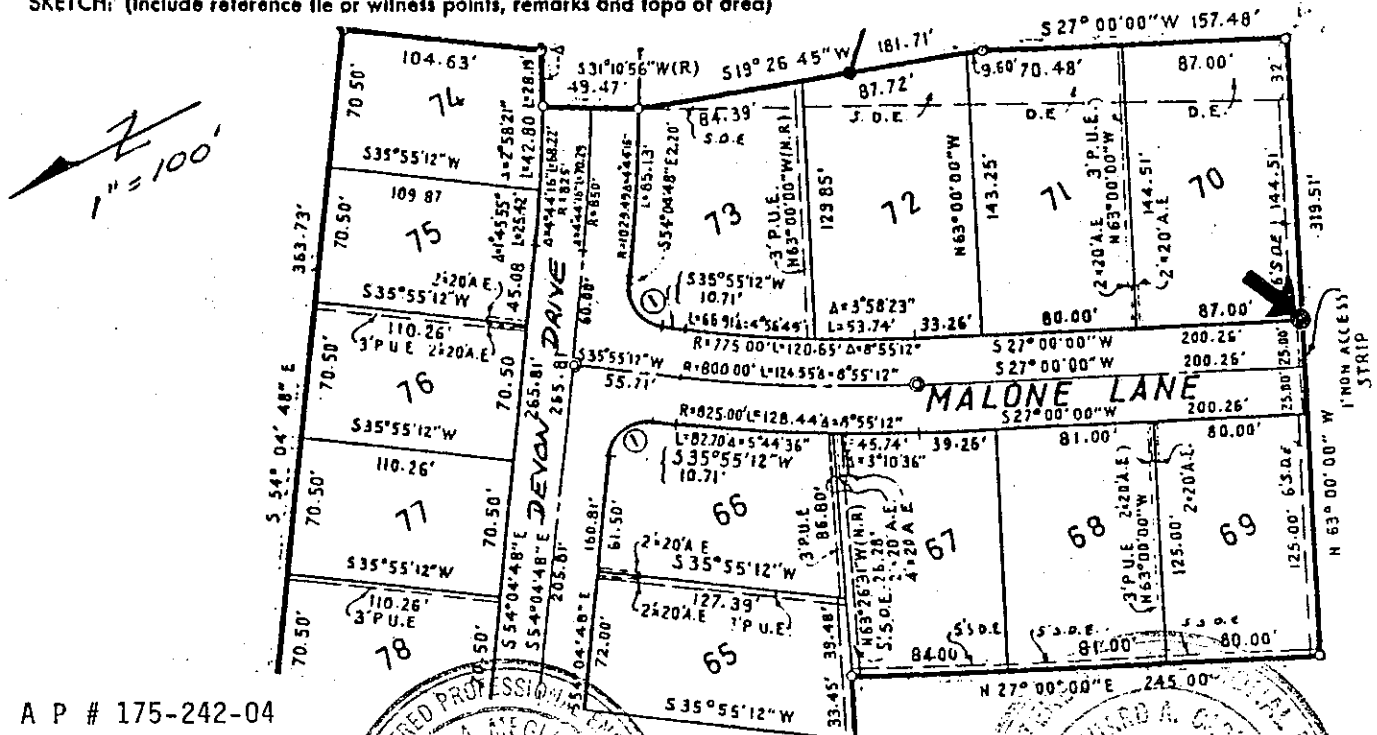
PHYSICAL DESCRIPTION OF CORNER FOUND, EVIDENCE AND METHOD USED TO IDENTIFY OR REESTABLISH
 Found Standard City Monuments as shown on the Map of Terra Linda Unit 17
 (11 Maps 9) Marin County Records

PHYSICAL DESCRIPTION OF MONUMENTS REBUILT OR PERPETUATED

- indicates 3/4 inch iron pipe and tag, RCE 17,486 set

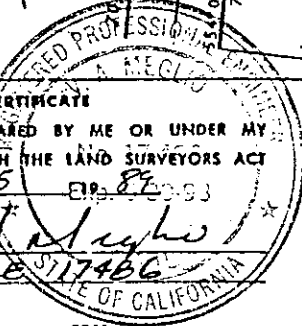
CALIFORNIA COORDINATE SYSTEM ORDER: FIRST SECOND THIRD
 STATIONS USED: NGS (USC & GS) STATE COUNTY OTHER STATION _____ STATION _____
 ZONE _____ ELEVATION _____ NORTHINGS (Y) _____ EASTINGS (X) _____

SKETCH: (Include reference file or witness points, remarks and topo of area)



A P # 175-242-04

SURVEYOR'S CERTIFICATE
 THIS CORNER RECORD WAS PREPARED BY ME OR UNDER MY DIRECTION IN CONFORMANCE WITH THE LAND SURVEYORS ACT ON Sept 5 1988
 SIGNED: [Signature]
 L.S. or R.C.E. No. 1117486



COUNTY SURVEYOR'S CERTIFICATE
 THE CORNER RECORD WAS RECEIVED AND EXAMINED AND FILED BY [Signature] TITLE: AP R-51-81 CIVIL
 DOCUMENT No. _____
 STATEMENT ON BACK OF SHEET

