

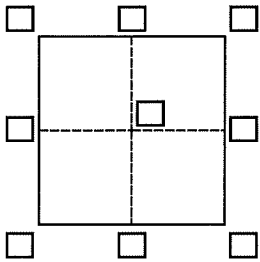
# CORNER RECORD

Agency Index DPW # 19-066

Document Number 175-143-14

City of San Rafael County of Marin, California

Brief Legal Description Lot 91, as shown on map of "Terra Linda, unit 21A", 14 RM 34, M.C.R.



### CORNER TYPE

- Government Corner  Control   
 Meander  Property   
 Rancho  Other

Date of Survey June 17, 2019

### COORDINATES (Optional)

- N. \_\_\_\_\_ E. \_\_\_\_\_  
 Elevation \_\_\_\_\_  
 Units Metric  U.S. Survey Foot   
 Horizontal Datum \_\_\_\_\_  
 Zone \_\_\_\_\_ Epoch Date \_\_\_\_\_  
 Vertical Datum \_\_\_\_\_  
 Complies with Public Resources Code §§8801-8819  
 Complies with Public Resources Code §§8890-8902

PLS Act Ref.:  8765(d)  8771  8773  Other:

Corner/Monument:  Left as found  Established  Rebuilt  Pre-Construction  
 Found and tagged  Reestablished  Referenced  Post-Construction

Narrative of corner identified and monument as found, set, reset, replaced, or removed:

See sheet #2 for description(s):  
 Found street monuments on centerline of Elda Drive as shown on map of "Terra Linda, Unit 21A", 14 Record Maps 34, Marin County Records, and 1/2" iron pipes LS 7237, as shown on Corner Record 175-143-14, filed on November 24, 2015, to be in good condition and record position, and used to reestablish the northerly line of Lot 91.

### SURVEYOR'S STATEMENT

This Corner Record was prepared by me or under my direction in conformance with the Professional Land Surveyors' Act on June 24, 2019.  
 Signed Michael E. Ford P.L.S. or R.C.E. No. 7237



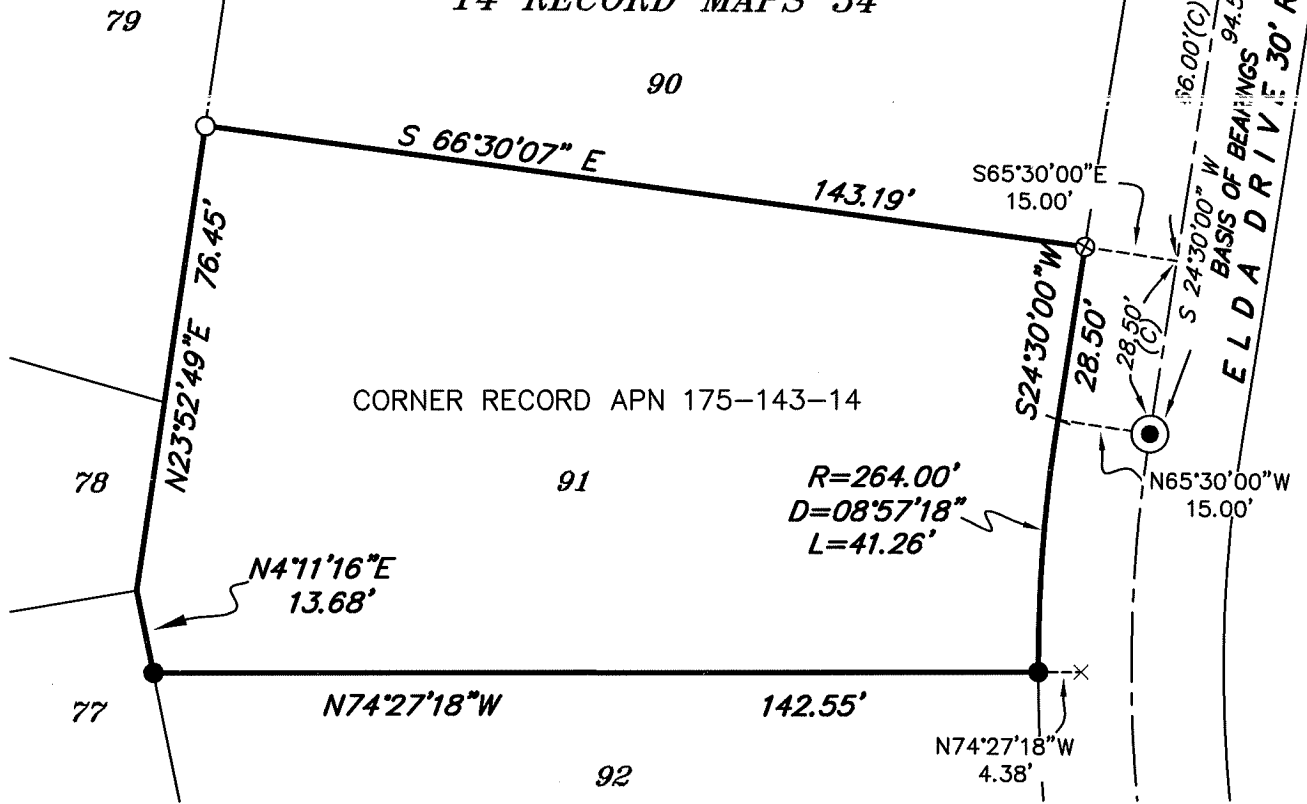
### COUNTY SURVEYOR'S STATEMENT

This Corner Record was received July 1, 2019  
 and examined and filed OCT. 07, 2019.  
 Signed J.R. Semerad P.L.S. or R.C.E. No. 9292  
 Title DEPUTY C.S.



County Surveyor's Comment

"TERRA LINDA, UNIT 21A"  
14 RECORD MAPS 34



**BASIS OF BEARINGS**

S24°30'00\"/>

**BOUNDARY NOTE:**

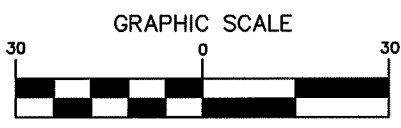
ALL COURSES SHOWN HEREON ARE RECORD AND MEASURED PER MAP OF TERRA LINDA UNIT 21A, MARIN COUNTY RECORDS.

**LEGEND**

- (with dot) FOUND STANDARD STREET MONUMENT
- SET 1/2\"/>

**NOTE:**

ALL DISTANCES SHOWN ARE IN FEET AND DECIMALS THEREOF.  
ALL SURVEY TIES ARE PERPENDICULAR UNLESS OTHERWISE NOTED.



( IN FEET )  
1 inch = 30 ft.



2300 bethards drive, suite J  
santa rosa, california 95405  
p 707.542.8513 - f 707.542.1825  
www.michaelfordinc.com