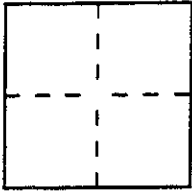


# CORNER RECORD

Document Number I.N. 92-70933

City of San Rafael County of Marin, California

Brief Legal Description Lot 94, Map of Terra Linda Unit 21, 13-Maps-89, Marin County Records



### CORNER TYPE

Government Corner  Control   
 Meander  Property   
 Rancho  Other   
 Date of Survey 10 June 1996

### COORDINATES (Optional)

N. \_\_\_\_\_  
 E. \_\_\_\_\_  
 Zone \_\_\_\_\_ Datum \_\_\_\_\_  
 Elev. \_\_\_\_\_

Corner — Left as found  Found and tagged  Established  Reestablished  Rebuilt

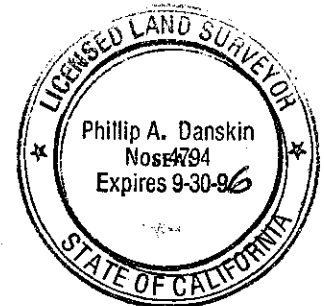
Identification and type of corner found: Evidence used to identify or procedure used to establish or reestablish the corner:  
Found 3/4" I.D. iron pipe with plastic plug "LS 3775", at the southwest and southeast corners of Lot 94  
Map of Terra Linda Unit 21, recorded in Book 13 of Maps, at Page 89, Marin County Records.

A description of the physical condition of the monument as found and as set or reset: As shown upon reverse side

### SURVEYOR'S STATEMENT

This Corner Record was prepared by me or under my direction in conformance with  
 the Land Surveyors' Act on 10 June 1996.

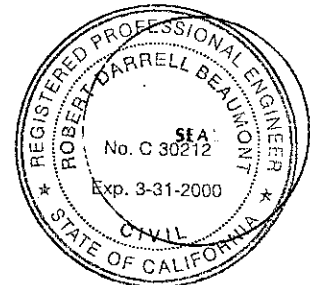
Signed [Signature] L.S. or R.C.E. Number LS 4794



### COUNTY SURVEYOR'S STATEMENT

This Corner Record was received JULY 9 1996 and examined  
 and filed 7-9 1996.

Signed [Signature] Title Des



County Surveyor's Comment \_\_\_\_\_

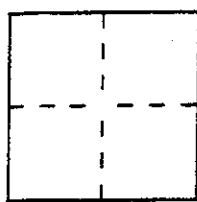


# CORNER RECORD

Document Number I.N. 92-70933

City of San Rafael County of Marin, California

Brief Legal Description Lot 94, Map of Terra Linda Unit 21, 13-Maps-89, Marin County Records



### CORNER TYPE

Government Corner  Control   
 Meander  Property   
 Rancho  Other   
 Date of Survey 10 June 1996

### COORDINATES (Optional)

N. \_\_\_\_\_  
 E. \_\_\_\_\_  
 Zone \_\_\_\_\_ Datum \_\_\_\_\_  
 Elev. \_\_\_\_\_

Corner — Left as found  Found and tagged  Established  Reestablished  Rebuilt

Identification and type of corner found: Evidence used to identify or procedure used to establish or reestablish the corner:  
Set 3/4" I.D. galvanized iron pipe, with plastic plug "LS 4794", at the northwesterly corner of Lot 94, Map of Terra Linda Unit 21, recorded in Book 13 of Maps, at Page 89, Marin County Records

A description of the physical condition of the monument as found and as set or reset: As shown upon reverse side

### SURVEYOR'S STATEMENT

This Corner Record was prepared by me or under my direction in conformance with the Land Surveyors' Act on 10 June 1996.

Signed [Signature] L.S. or R.C.E. Number LS 4794



### COUNTY SURVEYOR'S STATEMENT

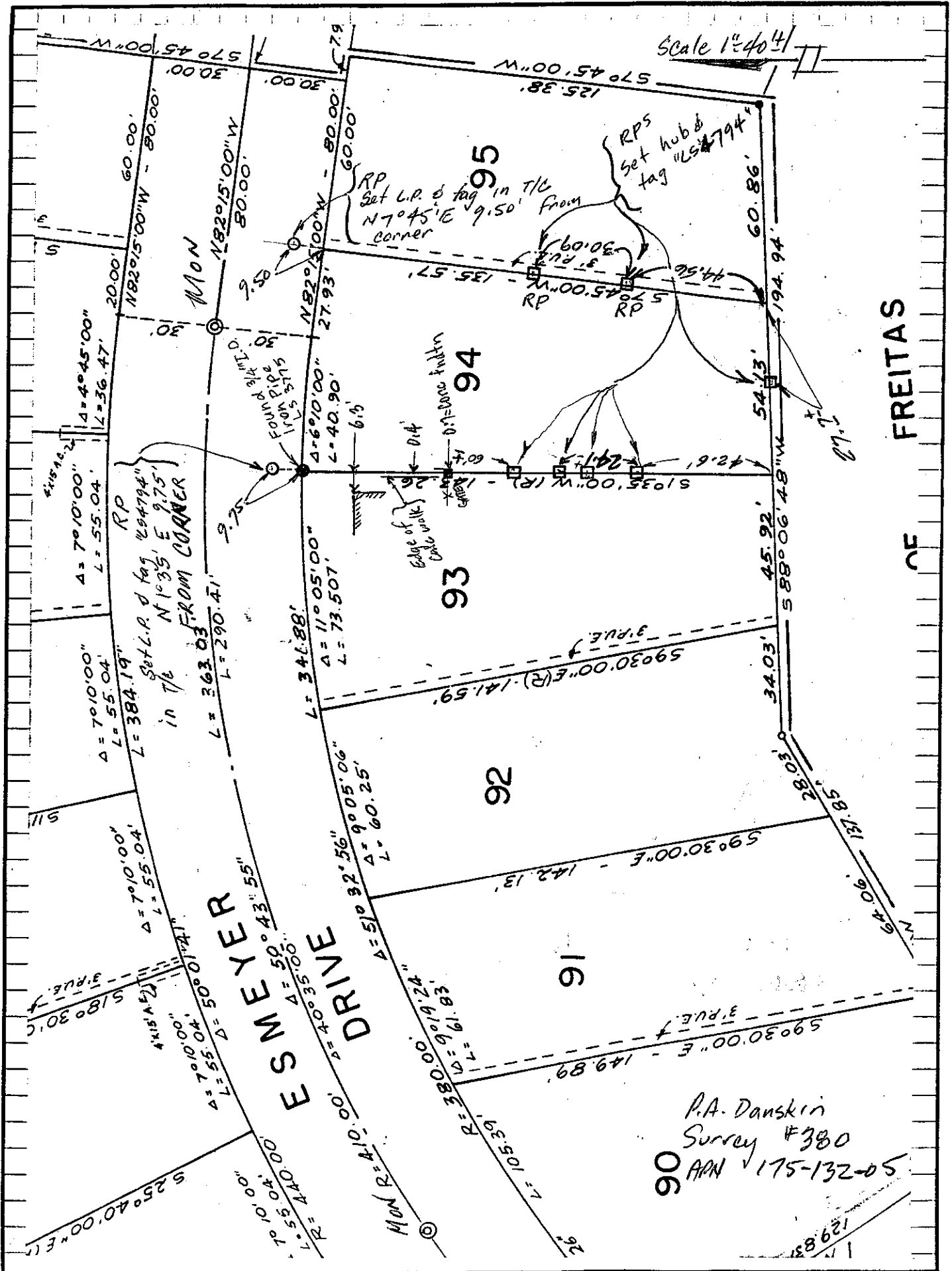
This Corner Record was received JULY 9 1996 and examined

and filed 7-9 1996.

Signed [Signature] Title DCS



County Surveyor's Comment \_\_\_\_\_



P.A. Danskin  
 Surrey #380  
 APR 175-132-05