

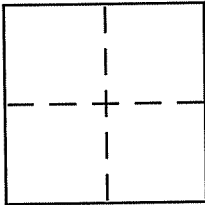
**CORNER RECORD**

Document Number APN 175-092-04

City of SAN RAFAEL

County of MARIN, California

Brief Legal Description LOT 4 PER VOLUME 12 OF MAPS, PAGE 93, MCR



**CORNER TYPE**

Government Corner  Control   
Meander  Property   
Rancho  Other   
Date of Survey APRIL 2009

**COORDINATES (Optional)**

N. \_\_\_\_\_  
E. \_\_\_\_\_  
Zone \_\_\_\_\_ NAD27  NAD83   
NAD83 Epoch \_\_\_\_\_  
Elev. \_\_\_\_\_  
Vert. Datum: NGVD29  NAVD88   
Meas. Units: Metric  Imperial

Corner - Left as found  Found and tagged  Established  Reestablished  Rebuilt

Identification and type of corner found: Evidence used to identify or procedure used to establish or reestablish the corner:  
SEE PAGE 2

A description of the physical condition of the monument as found and as set or reset:  
SEE PAGE 2

**SURVEYOR'S STATEMENT**

This Corner Record was prepared by me or under my direction in conformance with the Land Surveyor's Act on APRIL 27 2009

Signed [Signature] P.L.S or R.C.E. No. 7950



**COUNTY SURVEYOR'S STATEMENT**

This Corner Record was received MAY 4, 2009  
and examined and filed MAY 28, 2009

Signed [Signature] P.L.S or R.C.E. No. 7128

Title COUNTY SURVEYOR



County Surveyor's Comment \_\_\_\_\_

NORTH  
SCALE: 1" = 60'

**LEGEND**

- ⊙ FOUND STANDARD STREET MONUMENT PER R1
- SET 5/8-INCH REBAR WITH YELLOW CAP, STAMPED PLS 7950

**COURSE DATA**

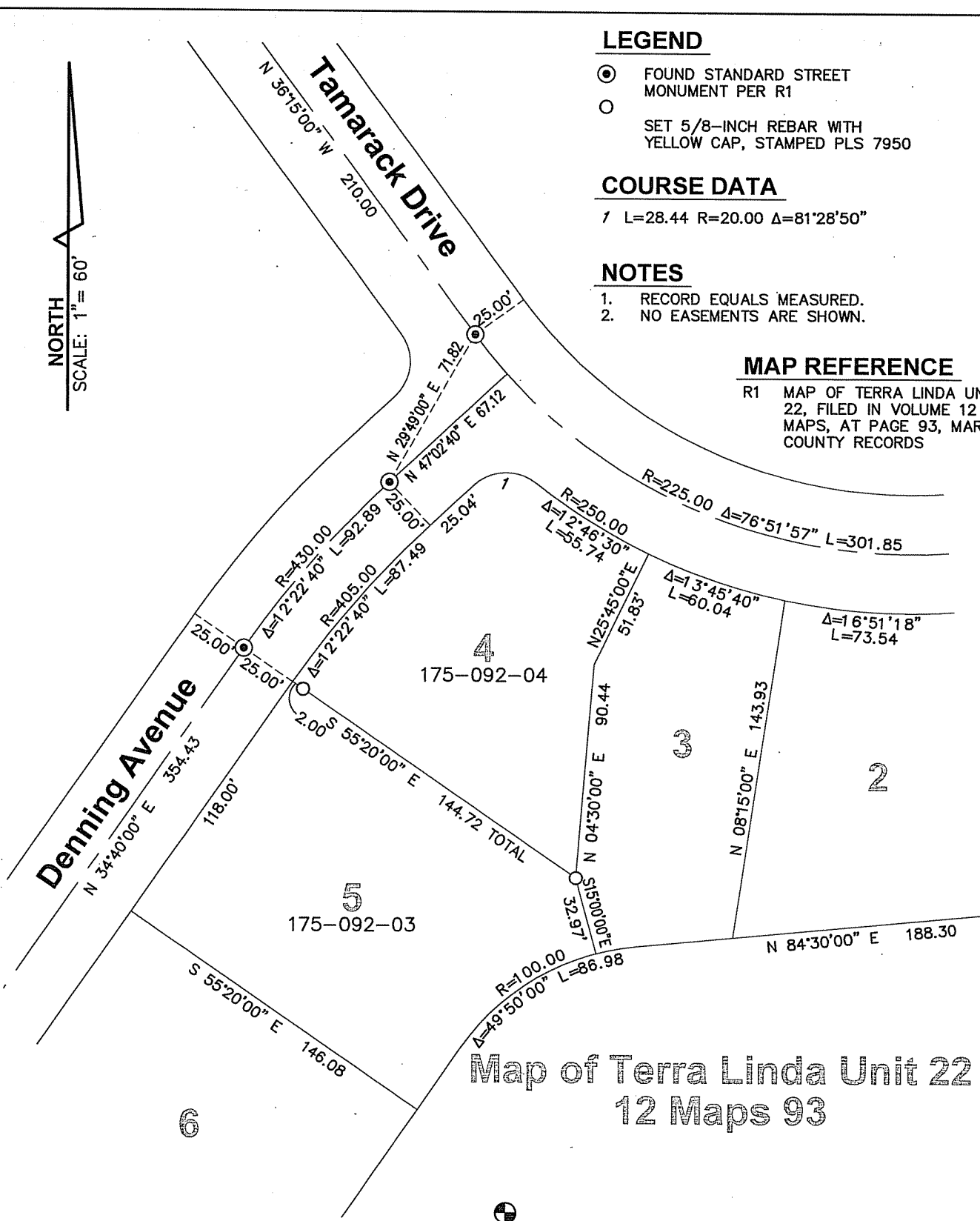
7 L=28.44 R=20.00 Δ=81°28'50"

**NOTES**

1. RECORD EQUALS MEASURED.
2. NO EASEMENTS ARE SHOWN.

**MAP REFERENCE**

R1 MAP OF TERRA LINDA UNIT 22, FILED IN VOLUME 12 OF MAPS, AT PAGE 93, MARIN COUNTY RECORDS



**Map of Terra Linda Unit 22  
12 Maps 93**

**STEVEN J. LAFRANCHI & ASSOCIATES, INC.**  
 CIVIL ENGINEERS - LAND SURVEYORS - LAND PLANNERS  
 PETALUMA MARINA BUSINESS CENTER  
 775 BAYWOOD DRIVE, SUITE 312  
 PETALUMA, CALIFORNIA 94954  
 707-762-3122 FAX 707-762-3239