

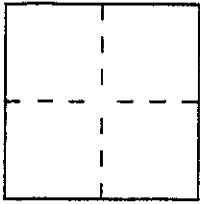
CORNER RECORD

Document Number APN. 175-072-17

City of SAN RAFAEL

County of MARIN, California

Brief Legal Description LOT 29 PER 12 R.M. 32



CORNER TYPE

Government Corner Control
 Meander Property
 Rancho Other
 Date of Survey JUNE 13, 2000

COORDINATES (Optional)

N. _____
 E. _____
 Zone _____ Datum _____
 Elev. _____

Corner — Left as found Found and tagged Established Reestablished Rebuilt

Identification and type of corner found: Evidence used to identify or procedure used to establish or reestablish the corner:

= SEE OVER =

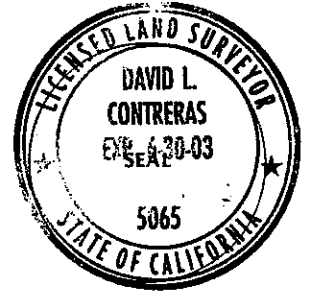
A description of the physical condition of the monument as found and as set or reset:

= SEE OVER =

SURVEYOR'S STATEMENT

This Corner Record was prepared by me or under my direction in conformance with the Land Surveyors' Act on August 10, 2000

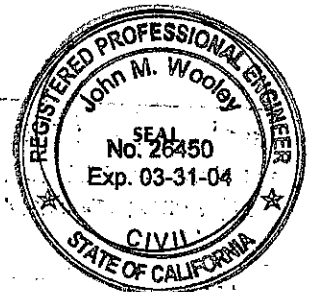
Signed David Contreras (L.S.) or R.C.E. Number 5065



COUNTY SURVEYOR'S STATEMENT

This Corner Record was received AUGUST 17, 2000 and examined and filed AUGUST 18, 2000

Signed John M. Wooley Title DEPUTY



County Surveyor's Comment _____

566°10'00"E
 518°30'00"W
 A.P.N. 175-072-01
 13

A.P.N. 175-072-18
 30

A.P.N. 175-072-02
 14

A.P.N. 175-072-17
 29
 MALLOZZI / LANGL
 O.R. 1999-7788

A.P.N. 175-072-31
 28

15
 12 R.M. 32

36 O.S. 72
 S 15°53'32"W
 187.93'

16

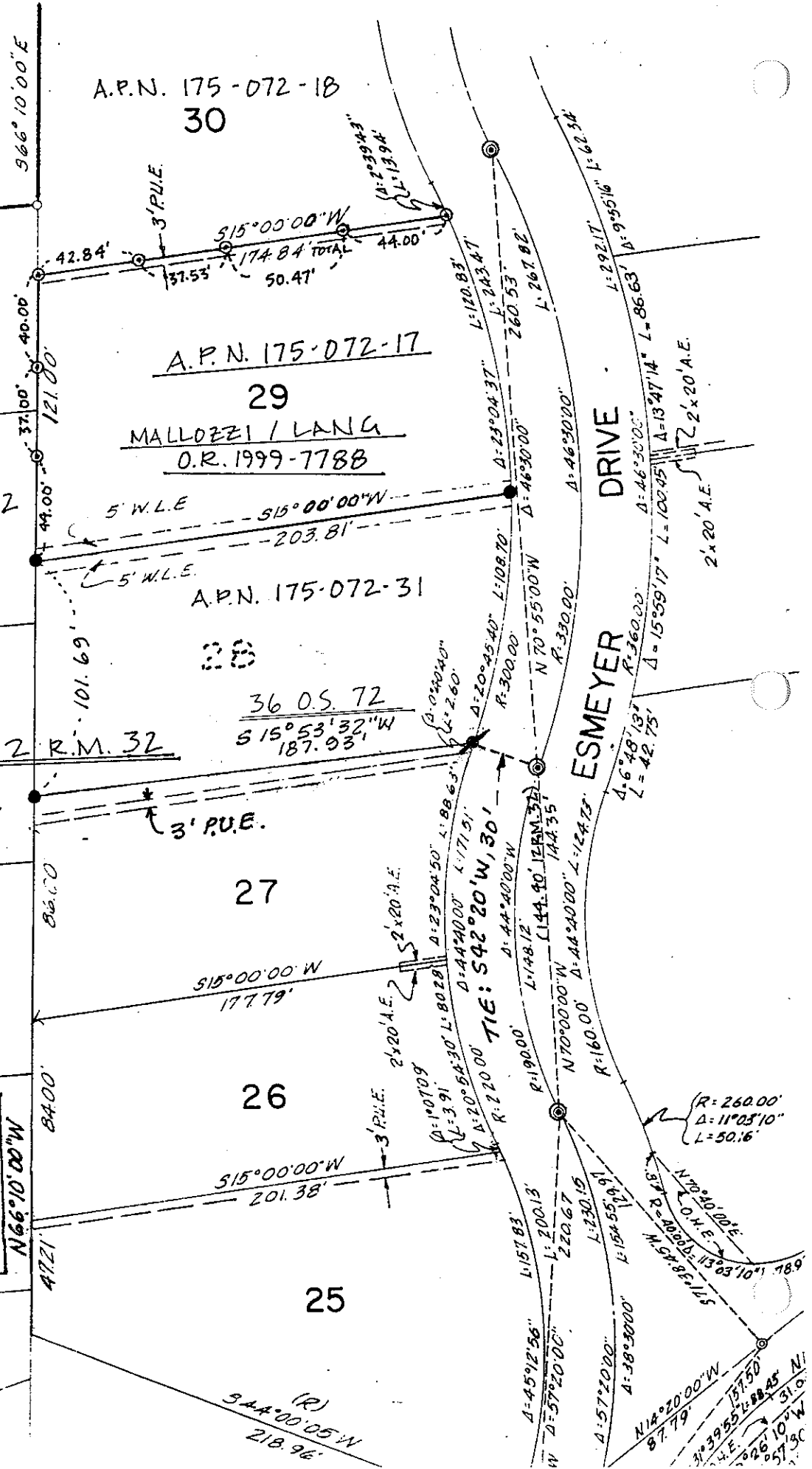
27

26

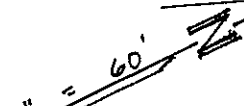
25

18

- ⊙ = SET 1/2" REBAR & CAP, L.S. 5065
- ⊙ = FOUND NAIL & TAG, L.S. 5065 ON BOTTOM STRINGER, WOODEN FENCE
- ⊙ = FOUND STD. STREET MONUMENT
- = FOUND 1/2" REBAR & CAP, L.S. 5065



ESMEYER DRIVE



(R)
 S 44°00'05"W
 218.96'

(R = 260.00'
 Δ = 11°03'10"
 L = 50.16'

(R = 200.00'
 Δ = 13°03'10"
 L = 189'

(R = 200.00'
 Δ = 13°03'10"
 L = 189'

(R = 200.00'
 Δ = 13°03'10"
 L = 189'

(R = 200.00'
 Δ = 13°03'10"
 L = 189'