

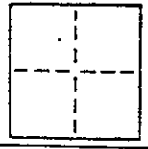
CORNER RECORD

A.P. #175-060-62

COUNTY OF _____ T. _____ R. _____ SEC. _____ M. D. 8-8 MERIDIAN CALIFORNIA

CORNER TYPE: GOVT. CORNER MEANDER RANCHO CONTROL OTHER

CORNER IDENTIFICATION — DATE OF VISIT _____ 19____



Parcel 1, Parcel Map of Hartzell School
Recorded 23 P.M. 1, Marin County CA.

CORNER — LEFT AS FOUND FOUND AND TAGGED REESTABLISHED OBLITERATED CORNER RESULT

PHYSICAL DESCRIPTION OF CORNER FOUND; EVIDENCE AND METHOD USED TO IDENTIFY OR REESTABLISH

Reset boundary point on Southerly line discovered
Missing During ALTA Survey of Property.

A.P. #175-060-62

PHYSICAL DESCRIPTION OF MONUMENTS REBUILT OR PERPETUATED

Set 3/4" X 18" Steel Pipe with Plastic Tag
L.S. 3303.

San Rafael

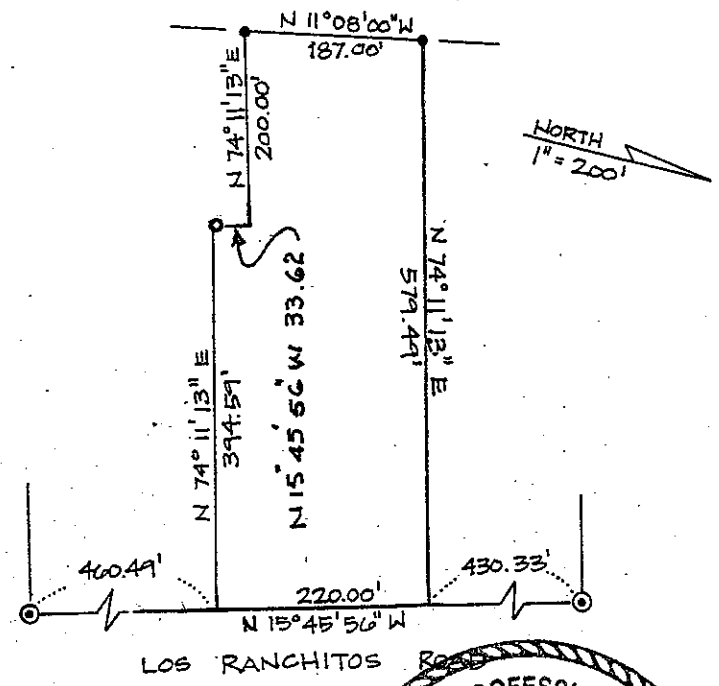
CALIFORNIA COORDINATE SYSTEM ORDER: FIRST SECOND THIRD

STATIONS USED: NGS (USC & GS) STATE COUNTY OTHER STATION _____ STATION _____

ZONE _____ ELEVATION _____ NORTHINGS (Y) _____ EASTINGS (X) _____

SKETCH: (include reference tie or witness points, remarks and topo of area)

- ③ FOUND STD. STREET MONUMENT
- FOUND 3/4" I.P. W/RCE TAG 8389
- SET 3/4" I.P. W/ L.S. TAG 3303

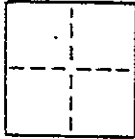


SEAL
LICENSED LAND SURVEYOR
SURVEYOR'S CERTIFICATE
THIS CORNER RECORD WAS PREPARED BY ME OR UNDER MY DIRECTION IN CONFORMANCE WITH THE LAND SURVEYORS ACT ON July 6 1992 L.S. or R.C.E. No. 3303
SIGNED: John G. Stuber
STATE OF CALIFORNIA

SEAL
REGISTERED PROFESSIONAL ENGINEER
COUNTY SURVEYORS' CERTIFICATE
THE CORNER RECORD WAS RECEIVED AND EXAMINED AND FOUND CORRECT BY John G. Stuber TITLE: Surveyor
DOCUMENT No. C 30212
Exp. 3-31-98
STATEMENT ON BACK OF SHEET
STATE OF CALIFORNIA

CORNER RECORD

COUNTY OF _____ T. _____ R. _____ SEC. _____ M. D. 8-8 MERIDIAN CALIFORNIA
 CORNER TYPE: GOVT. CORNER MEANDER RANCHO CONTROL OTHER
 CORNER IDENTIFICATION — DATE OF VISIT _____ 19____



Parcel 1, Parcel Map of Hartzell School
 Recorded 23 P.M. 1, Marin County CA.

CORNER — LEFT AS FOUND FOUND AND TAGGED REESTABLISHED OBLITERATED CORNER RESULT

PHYSICAL DESCRIPTION OF CORNER FOUND; EVIDENCE AND METHOD USED TO IDENTIFY OR REESTABLISH

Reset boundary point on southerly line discovered
 Missing During ALTA Survey of Property.

A.P. #175-060-62

PHYSICAL DESCRIPTION OF MONUMENTS RESULT OR PERPETUATED

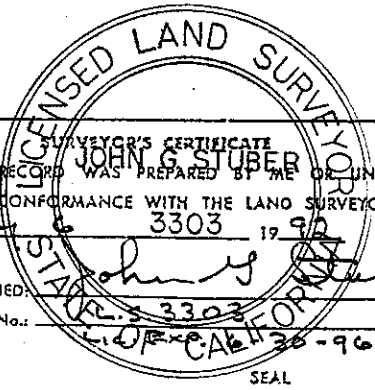
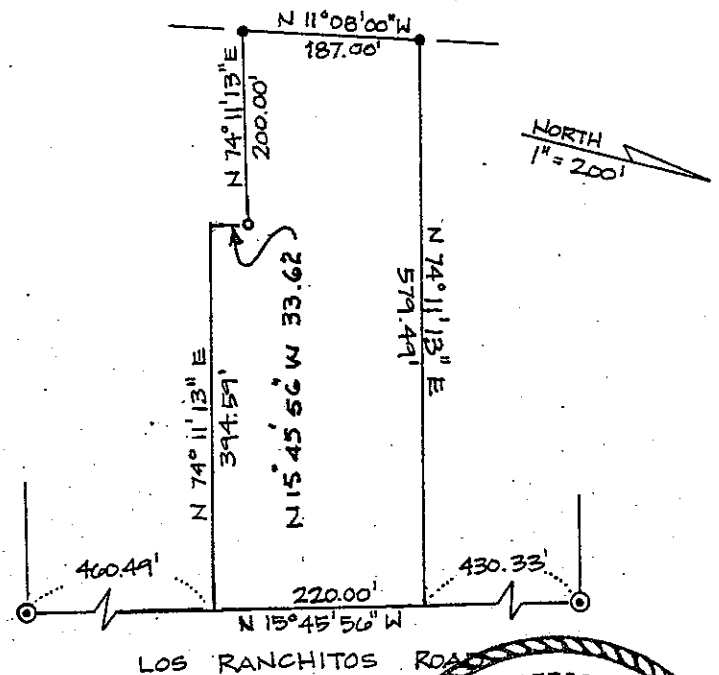
Set 3/4" X 18" Steel Pipe with Plastic Tag
 L.S. 3303.

San Rafael

CALIFORNIA COORDINATE SYSTEM ORDER: FIRST SECOND THIRD
 STATIONS USED: NGS (USC & GS) STATE COUNTY OTHER STATION _____ STATION _____
 ZONE _____ ELEVATION _____ NORTHINGS (Y) _____ EASTINGS (X) _____

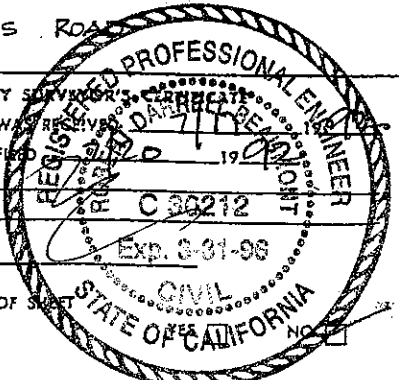
SKETCH: (Include reference file or witness points, remarks and topo of area)

- ② FOUND STD. STREET MONUMENT
- FOUND 3/4" I.P. W/RCE TAG 8389
- SET 3/4" I.P. W/ L.S. TAG 3303



THIS CORNER RECORD WAS PREPARED BY ME OR UNDER MY DIRECTION IN CONFORMANCE WITH THE LAND SURVEYORS ACT ON July 6 1992 AT 3303
 SIGNED: John G. Stuber
 L.S. or R.C.E. No.: 3303

COUNTY SURVEYOR'S CERTIFICATE
 THE CORNER RECORD WAS RECEIVED, EXAMINED AND FIELD CHECKED BY: John G. Stuber 1992
 TITLE: C 330212
 DOCUMENT No. _____
 STATEMENT ON BACK OF SHEET _____
 STATE OF CALIFORNIA

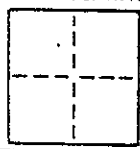


CORNER RECORD

COUNTY OF _____ T. _____ R. _____ SEC. _____ M. D. B. & MERIDIAN _____ CALIFORNIA

CORNER TYPE: GOVT. CORNER MEANDER RANCHO CONTROL OTHER

CORNER IDENTIFICATION — DATE OF VISIT _____ 19____



Parcel 1, Parcel Map of Hartzell School
Recorded 23 P.M. 1, Marin County CA.

CORNER — LEFT AS FOUND FOUND AND TAGGED REESTABLISHED OBLITERATED CORNER RESULT

PHYSICAL DESCRIPTION OF CORNER FOUND; EVIDENCE AND METHOD USED TO IDENTIFY OR REESTABLISH

Reset southeast corner discovered
Missing During ALTA Survey of Property.

A.P. #175-060-62

PHYSICAL DESCRIPTION OF MONUMENTS RESULT OR PERPETUATED

Set 3/4" X 18" Steel Pipe with Plastic Tag
L.S. 3303.

San Rafael

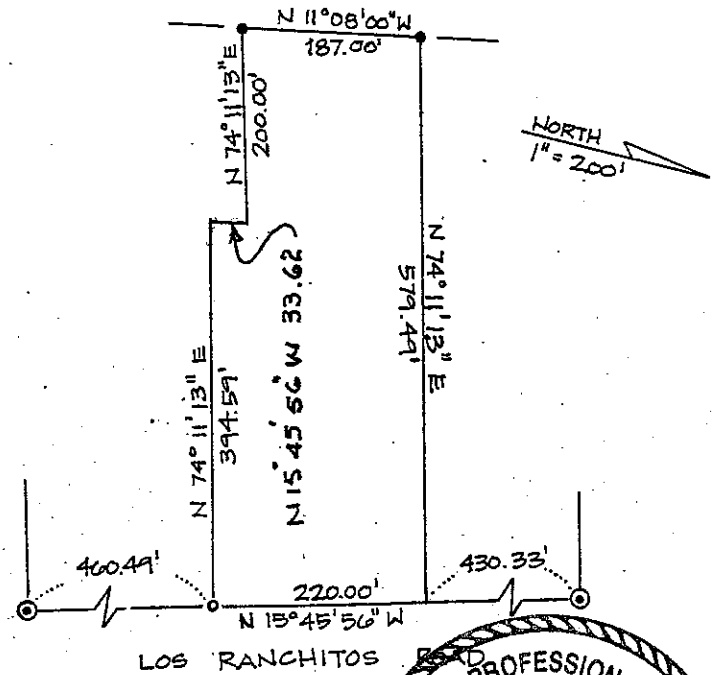
CALIFORNIA COORDINATE SYSTEM ORDER: FIRST SECOND THIRD

STATIONS USED: NGS (USC & GS) STATE COUNTY OTHER STATION _____ STATION _____

ZONE _____ ELEVATION _____ NORTHINGS (Y) _____ EASTINGS (X) _____

SKETCH: (Include reference tie or witness points, remarks and topo of area)

- ② FOUND STD. STREET MONUMENT
- FOUND 3/4" I.P. W/RCE TAG 8389
- SET 3/4" I.P. W/ L.S. TAG 3303



UNLICENSED LAND SURVEYOR'S CERTIFICATE

THIS CORNER RECORD WAS PREPARED BY ME OR UNDER MY DIRECTION IN ACCORDANCE WITH THE SURVEYORS ACT ON July 6 1992

SIGNED: John G. Stuber
L.S. or R.C.E. No. 3303
Exp. 3-31-96

STATE OF CALIFORNIA

COUNTY SURVEYOR'S RECEIVED

THE CORNER RECORD WAS RECEIVED AND EXAMINED AND FOUND TO BE CORRECT BY: John G. Stuber 7/17/92

TITLE: C 30212

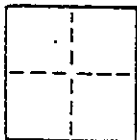
DOCUMENT No. _____

STATEMENT ON BACK OF SKETCH

PROFESSIONAL ENGINEER
CIVIL
STATE OF CALIFORNIA
Exp. 3-31-96

CORNER RECORD

COUNTY OF _____ T. _____ R. _____ SEC. _____ M. D. 8. 8 MERIDIAN CALIFORNIA
 CORNER TYPE: GOV'T. CORNER MEANDER RANCHO CONTROL OTHER
 CORNER IDENTIFICATION - DATE OF VISIT _____ 19____



Parcel 1, Parcel Map of Hartzell School
 Recorded 23 P.M. 1, Marin County CA.

CORNER - LEFT AS FOUND FOUND AND TAGGED REESTABLISHED OBLITERATED CORNER RESULT

PHYSICAL DESCRIPTION OF CORNER FOUND; EVIDENCE AND METHOD USED TO IDENTIFY OR REESTABLISH

Reset northeast corner discovered
 Missing During ALTA Survey of Property.

A.P. #175-060-62

PHYSICAL DESCRIPTION OF MONUMENTS RESULT OR PERPETUATED

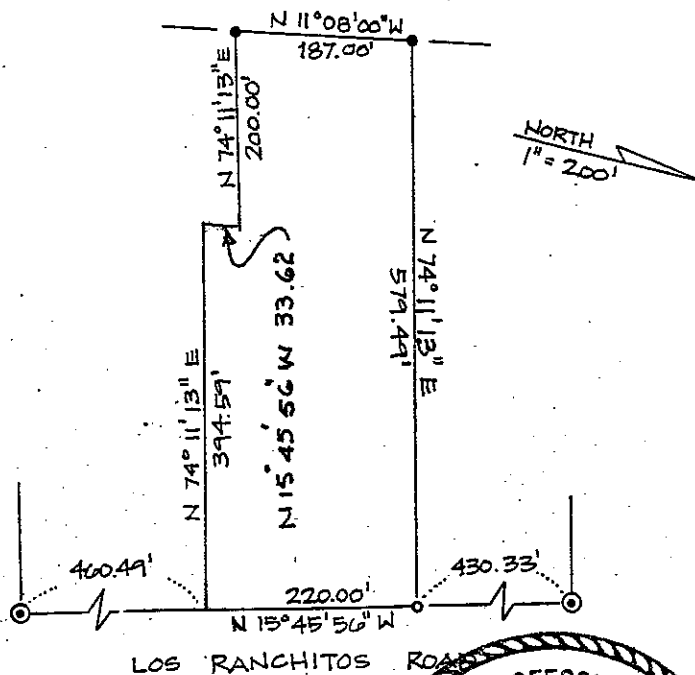
Set 3/4" X 18" Steel Pipe with Plastic Tag
 L.S. 3303.

San Rafael

CALIFORNIA COORDINATE SYSTEM ORDER: FIRST SECOND THIRD
 STATIONS USED: NGS (USC & GS) STATE COUNTY OTHER STATION _____ STATION _____
 ZONE _____ ELEVATION _____ NORTHINGS (Y) _____ EASTINGS (X) _____

SKETCH: (include reference tie or witness points, remarks and topo of area)

- ② FOUND STD. STREET MONUMENT
- FOUND 3/4" I.P. W/RCE TAG 8389
- SET 3/4" I.P. W/ L.S. TAG 3303



SURVEYOR'S CERTIFICATE
 JOHN G. STUBER
 THIS CORNER RECORD WAS PREPARED BY ME OR UNDER MY
 DIRECTION IN CONFORMANCE WITH THE LAND SURVEYORS ACT
 ON July 6 3303 1993

SIGNED: John G. Stuber
 L.S. or R.C.E. No.: L.S. 3303
 OF CALIF. 30-96
 SEAL

COUNTY SURVEYOR
 THE CORNER RECORD WAS RECEIVED
 AND EXAMINED AND FILED
 BY: John G. Stuber
 TITLE: C/30212
 DOCUMENT No. _____
 STATEMENT ON BACK OF SHEET

