



JERRICO ASSOCIATES

7479

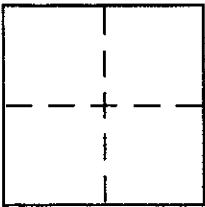
SUITE 27
77 MARK DRIVE
SAN RAFAEL, CA 94903

Document Number 175-060-09

CORNER RECORD

City of San Rafael County of Marin, California

Brief Legal Description The Poor Sisters of Nazareth of San Rafael 1659 OR 351
Adjacent to recorded maps on all sides.



CORNER TYPE

COORDINATES (Optional)

Government Corner Control
Meander Property
Rancho Other
Date of Survey January 30, 2003

N. _____
E. _____
Zone _____ NAD27 NAD83
NAD83 Epoch _____
Elev. _____
Vert. Datum: NGVD29 NAVD88
Meas. Units: Metric Imperial

Corner - Left as found Found and tagged Established Reestablished Rebuilt

Identification and type of corner found: Evidence used to identify or procedure used to establish or reestablish the corner:
Found standard subdivision monuments on NOVA ALBION
WAY

A description of the physical condition of the monument as found and as set or reset:
(A) Found old 3/4" iron pipe & plug. (B) Set nail & tag LS 3887 in conc.
(C) (D) (E) (F) Set rebar and cap LS 3887.

SURVEYOR'S STATEMENT

This Corner Record was prepared by me or under my direction in conformance with
the Land Surveyor's Act on January 22 2003

Signed [Signature] P.L.S or R.C.E. No. LS 3887



COUNTY SURVEYOR'S STATEMENT

This Corner Record was received February 3, 2003

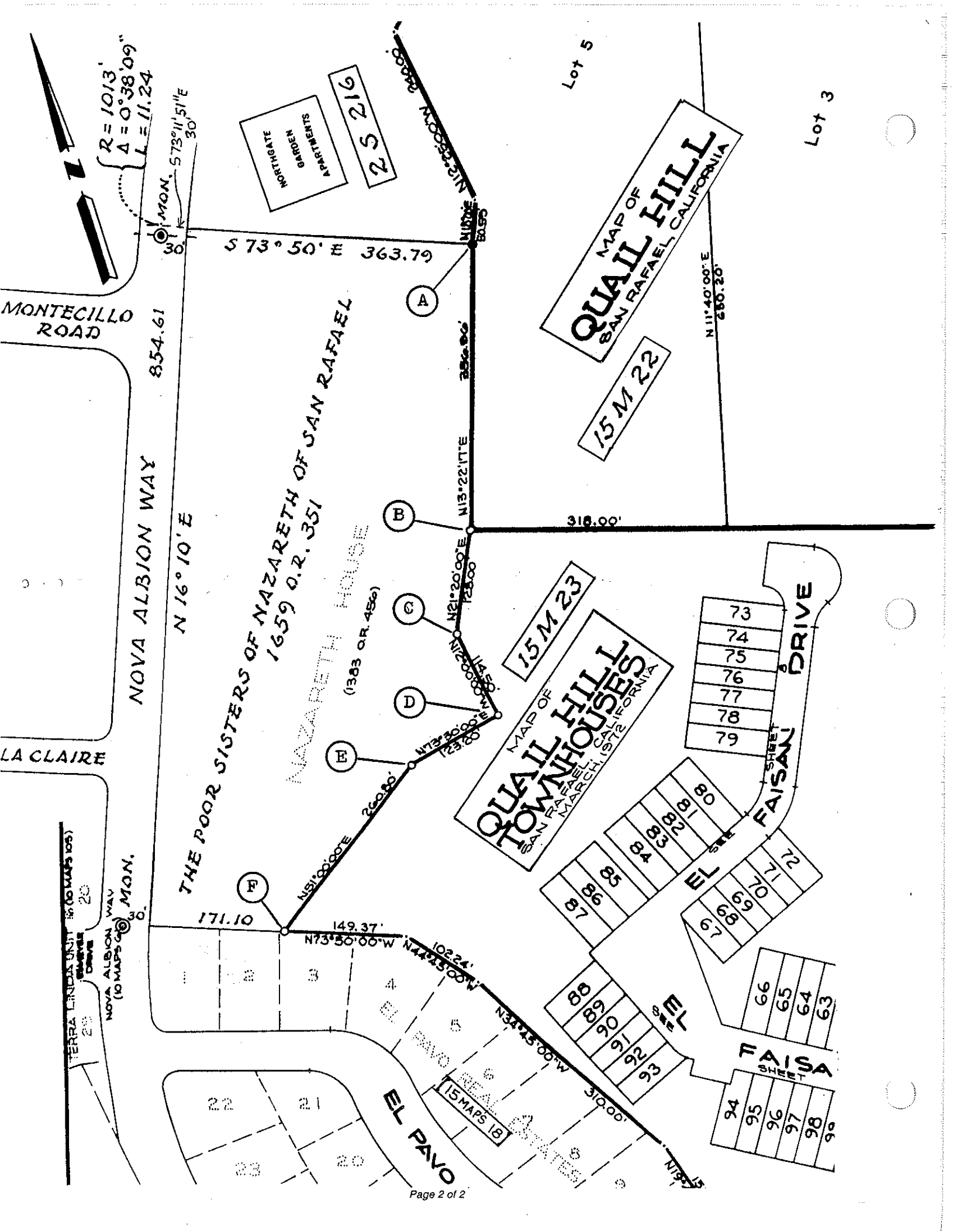
and examined and filed February 4, 2003

Signed [Signature] P.L.S or R.C.E. No. 7128

Title DEPUTY



County Surveyor's Comment _____



$R = 1013'$
 $\Delta = 0^\circ 38' 09''$
 $L = 11.24$

MON. 573°11'51"E
 30'

S 73° 50' E 363.79

MONTECILLO ROAD

NOVA ALBION WAY

N 16° 10' E

THE POOR SISTERS OF NAZARETH OF SAN RAFAEL
 1659 O.R. 351

NAZARETH HOUSE
 (1383 O.R. 456)

MAP OF
QUAIL HILL
 SAN RAFAEL, CALIFORNIA

15M 22

MAP OF
QUAIL HILL TOWNHOUSES
 SAN RAFAEL, CALIFORNIA

FAISAN DRIVE
 SHEET
 73
74
75
76
77
78
79

EL PAVO
 SHEET
 80
81
82
83
84
85
86
87

FAISA
 SHEET
 94
95
96
97
98

NOVA ALBION WAY
 (10 MAPS @ 10' MON.)

TERRA LINDA UNIT
 (10 MAPS @ 10' MON.)

171.10

149.37

N 73° 50' 00" W

N 44° 25' 00" W

102.24

N 33° 15' 00" W

100.57

N 33° 15' 00" W

310.00

N 11° 40' 00" E

680.20

N 11° 40' 00" E

315.00

N 13° 22' 17" E

128.00

N 21° 20' 00" E

114.55

N 73° 26' 00" W

123.80

N 73° 26' 00" W

260.80

N 13° 22' 17" E

356.80

N 13° 22' 17" E

280.00

N 13° 22' 17" E

356.80

N 13° 22' 17" E

356.80

N 13° 22' 17" E

356.80

N 13° 22' 17" E

356.80

N 13° 22' 17" E

356.80

N 13° 22' 17" E

356.80

N 13° 22' 17" E

356.80

N 13° 22' 17" E

356.80

N 13° 22' 17" E

356.80

N 13° 22' 17" E

356.80

N 13° 22' 17" E

356.80

N 13° 22' 17" E

356.80

N 13° 22' 17" E

356.80

N 13° 22' 17" E

356.80

N 13° 22' 17" E

356.80

N 13° 22' 17" E

356.80

N 13° 22' 17" E

356.80

N 13° 22' 17" E

356.80

N 13° 22' 17" E

356.80

N 13° 22' 17" E

356.80

N 13° 22' 17" E

356.80

N 13° 22' 17" E

356.80

N 13° 22' 17" E

356.80

N 13° 22' 17" E

356.80

N 13° 22' 17" E

356.80

N 13° 22' 17" E

356.80

N 13° 22' 17" E

356.80

N 13° 22' 17" E

356.80

N 13° 22' 17" E

356.80

N 13° 22' 17" E

356.80

N 13° 22' 17" E

356.80