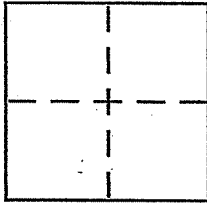


CORNER RECORD

Document Number 175.053.04
City of SAN RAFAEL County of MARIN, California

Brief Legal Description Lot 20 TERRA LINDA Unit 22 12 MAPS 93



CORNER TYPE

Government Corner Control
Meander Property
Rancho Other
Date of Survey 4/17/2008

COORDINATES (Optional)

N. _____
E. _____
Zone _____ NAD27 NAD83
NAD83 Epoch _____
Elev. _____
Vert. Datum: NGVD29 NAVD88
Meas. Units: Metric Imperial

Corner - Left as found Found and tagged Established Reestablished Rebuilt

Identification and type of corner found: Evidence used to identify or procedure used to establish or reestablish the corner:

REESTABLISH the southerly Lot line of LOT 20
TERRA LINDA, Unit 22, 12 MAPS 93 FROM EXISTING
STANDARD STREET MONUMENTS OF RECORD ON
TAMARACK DRIVE PER SAID MAP. SEE SKETCH
ON REVERSE SIDE FOR DETAILS

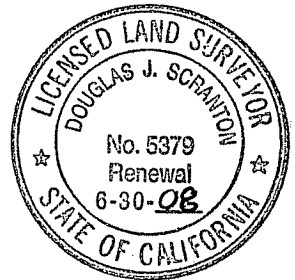
A description of the physical condition of the monument as found and as set or reset:

set 1/2 rebar
with yellow plastic cap AFFIXED TO TOP
EMBOSSED SCRANTON, PLS 5379, E. DRIVEN FLUSH
WITH SURROUNDING GRADE. SEE REVERSE SIDE
FOR SPECIFIC LOCATIONS.

SURVEYOR'S STATEMENT

This Corner Record was prepared by me or under my direction in conformance with the Land Surveyor's Act on APRIL 22 2008

Signed Douglas J. Scranton P.L.S or R.C.E. No. PLS 5379



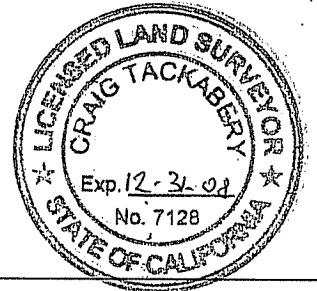
COUNTY SURVEYOR'S STATEMENT

This Corner Record was received APRIL 29, 2008

and examined and filed JUNE 2, 2008

Signed [Signature] P.L.S or R.C.E. No. 7128

Title COUNTY SURVEYOR

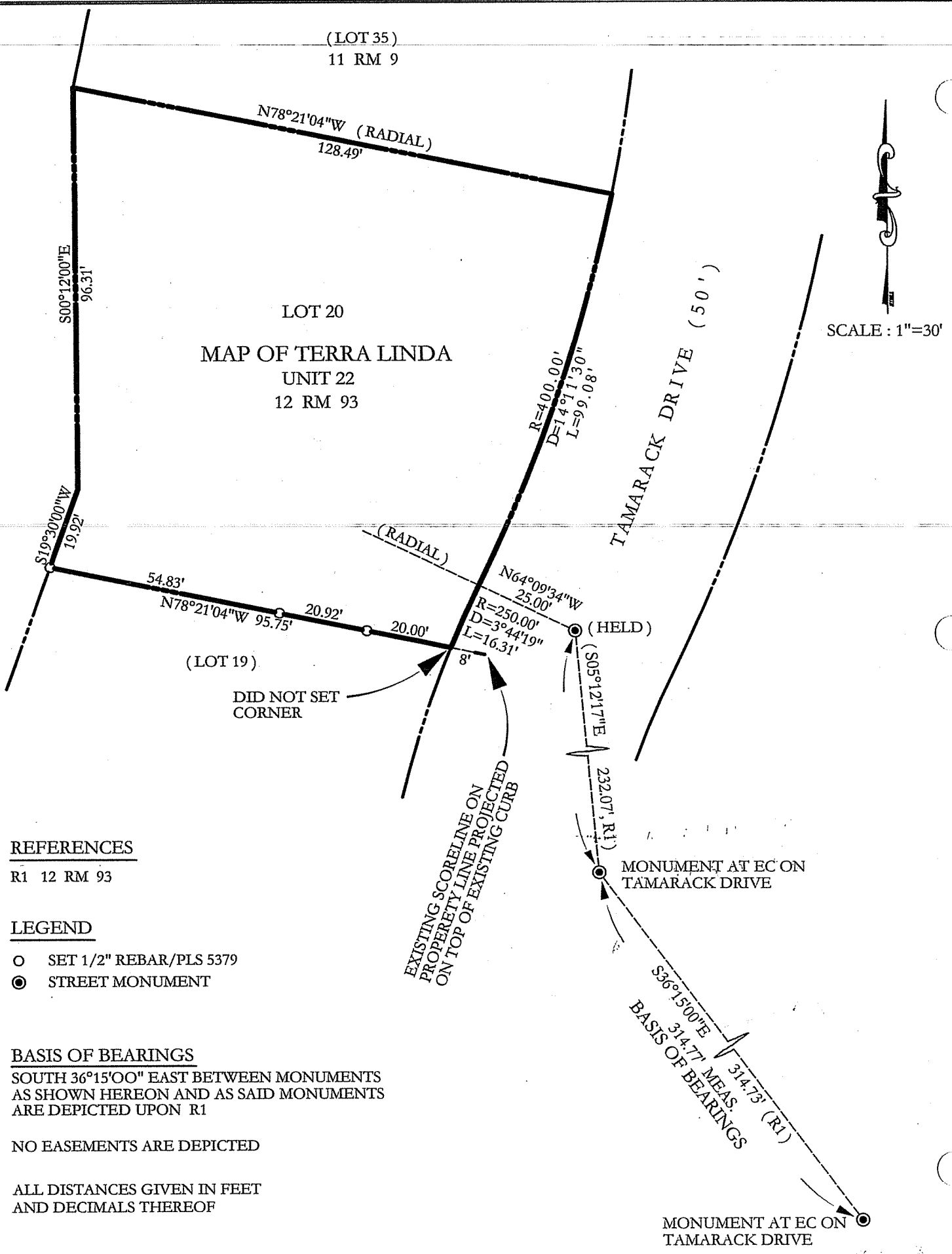
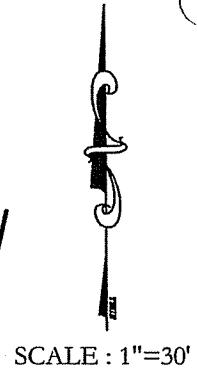


County Surveyor's Comment _____

PREPARED BY
DOUGLAS J. SCRANTON
SURVEYING
CONATO, CA

(LOT 35)
11 RM 9

LOT 20
MAP OF TERRA LINDA
UNIT 22
12 RM 93



REFERENCES

R1 12 RM 93

LEGEND

- SET 1/2" REBAR/PLS 5379
- STREET MONUMENT

BASIS OF BEARINGS

SOUTH 36°15'00" EAST BETWEEN MONUMENTS
AS SHOWN HEREON AND AS SAID MONUMENTS
ARE DEPICTED UPON R1

NO EASEMENTS ARE DEPICTED

ALL DISTANCES GIVEN IN FEET
AND DECIMALS THEREOF

MONUMENT AT EC ON
TAMARACK DRIVE