

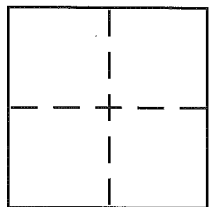
CORNER RECORD

Document Number APN 172-360-60

City of WOODACRE

County of _____, California

Brief Legal Description 2002 / MAPS / 13, MARIN CO. REC.



CORNER TYPE

Government Corner Control
Meander Property
Rancho Other
Date of Survey 4/27/14

COORDINATES (Optional)

N. _____
E. _____
Zone _____ NAD27 NAD83
NAD83 Epoch _____
Elev. _____
Vert. Datum: NGVD29 NAVD88
Meas. Units: Metric Imperial

Corner - Left as found Found and tagged Established Reestablished Rebuilt

Identification and type of corner found: Evidence used to identify or procedure used to establish or reestablish the corner:

SEE PAGE 2

A description of the physical condition of the monument as found and as set or reset:

SEE PAGE 2

SURVEYOR'S STATEMENT

This Corner Record was prepared by me or under my direction in conformance with the Land Surveyor's Act on September 25, 2014

Signed GJ Namina P.L.S or R.C.E. No. 7950



COUNTY SURVEYOR'S STATEMENT

This Corner Record was received Aug. 21, 2014

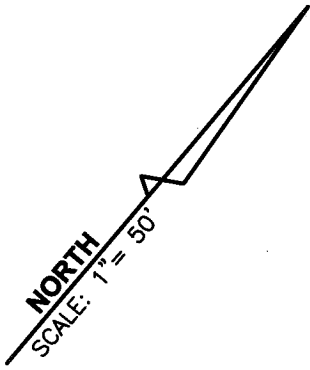
and examined and filed OCTOBER 31, 2014

Signed Richard G. Simonitch P.L.S or R.C.E. No. 7821

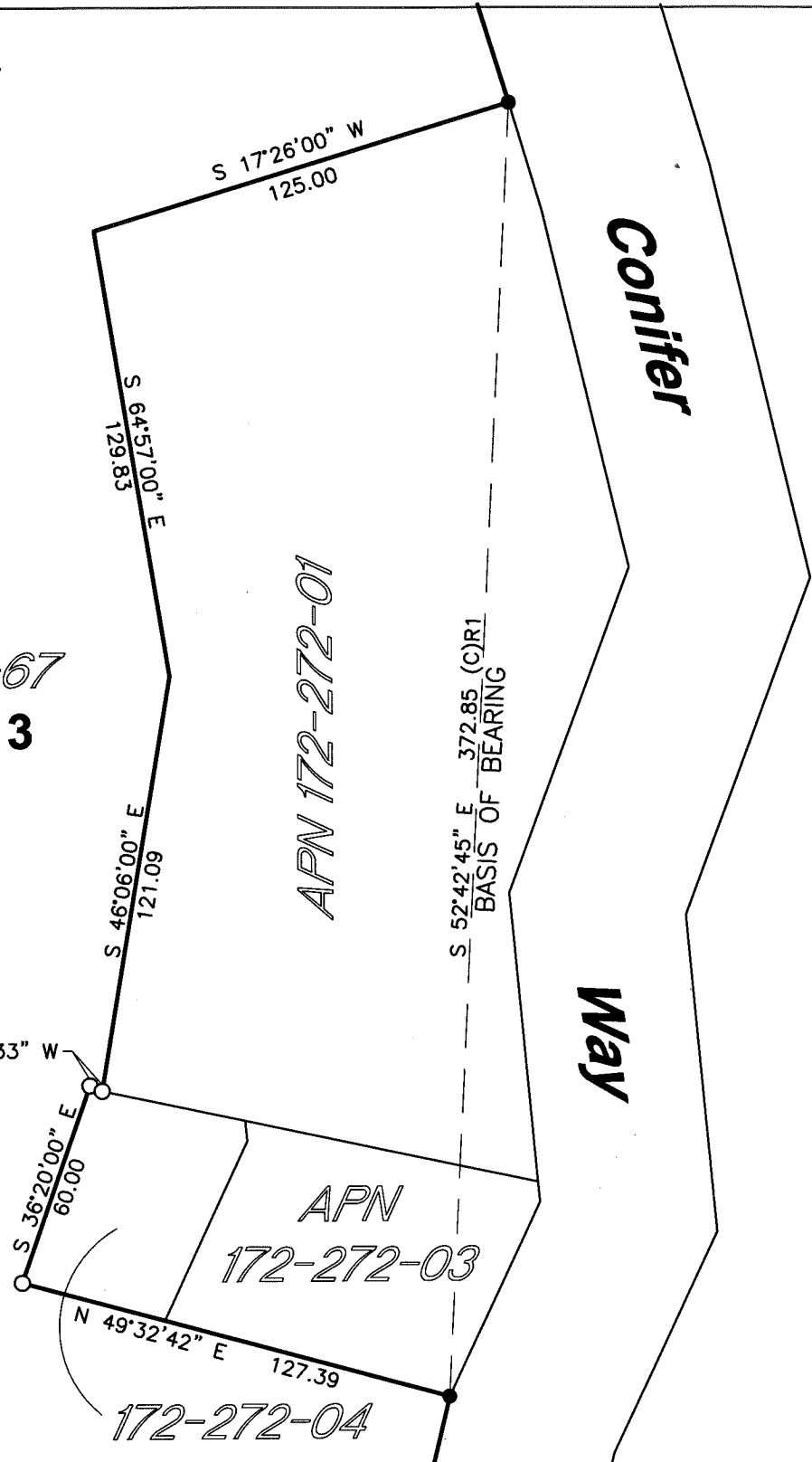
Title DEPUTY



County Surveyor's Comment _____



APN 172-360-67
2002 Maps 13



LEGEND

- FOUND 3/4" IRON PIPE, STAMPED "RCE 25006", PER R1
- SET 5/8" REBAR & CAP, STAMPED "PLS 7950"
- (C) CALCULATED
- R1 "RECORD OF SURVEY" 2002 MAPS 13, MCR
- MCR MARIN COUNTY RECORDS

STEVEN J. LAFRANCHI & ASSOCIATES, INC.
CIVIL ENGINEERS ~ LAND SURVEYORS ~ LAND PLANNERS

PETALUMA THEATRE SQUARE
140 SECOND STREET, SUITE 312
PETALUMA, CALIFORNIA 94952
707-762-3122 FAX 707-762-3239