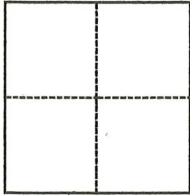


CORNER RECORD

Agency Index CR21-137
 Document Number APN 172-292-06

City of Unincorporated County of Marin, California
 Brief Legal Description Being the westerly line of Lot 32, 5 RM 15 & 2005 Maps 140, MCR

CORNER TYPE



- Government Corner Control
 Meander Property
 Rancho Other

Date of Survey November 15, 2021

COORDINATES (Optional)

N. _____ E. _____
 Elevation _____
 Units Metric U.S. Survey Foot
 Horizontal Datum _____
 Zone _____ Epoch Date _____
 Vertical Datum _____
 Complies with Public Resources Code §§8801-8819
 Complies with Public Resources Code §§8890-8902

PLS Act Ref.: 8765(d) 8771 8773 Other:
 Corner/Monument: Left as found Established Rebuilt Pre-Construction
 Found and tagged Reestablished Referenced Post-Construction

Narrative of corner identified and monument as found, set, reset, replaced, or removed:

See sheet #2 for description(s):

Found (5) rebar with yellow cap, LS 7744 per 2005 Maps 140. Set ends of line for Lot 32.

SURVEYOR'S STATEMENT

This Corner Record was prepared by me or under my direction in conformance with

the Professional Land Surveyors' Act on July 28, 2022

Signed [Signature] P.L.S. or R.C.E. No. 7950



COUNTY SURVEYOR'S STATEMENT

This Corner Record was received 8/1/22

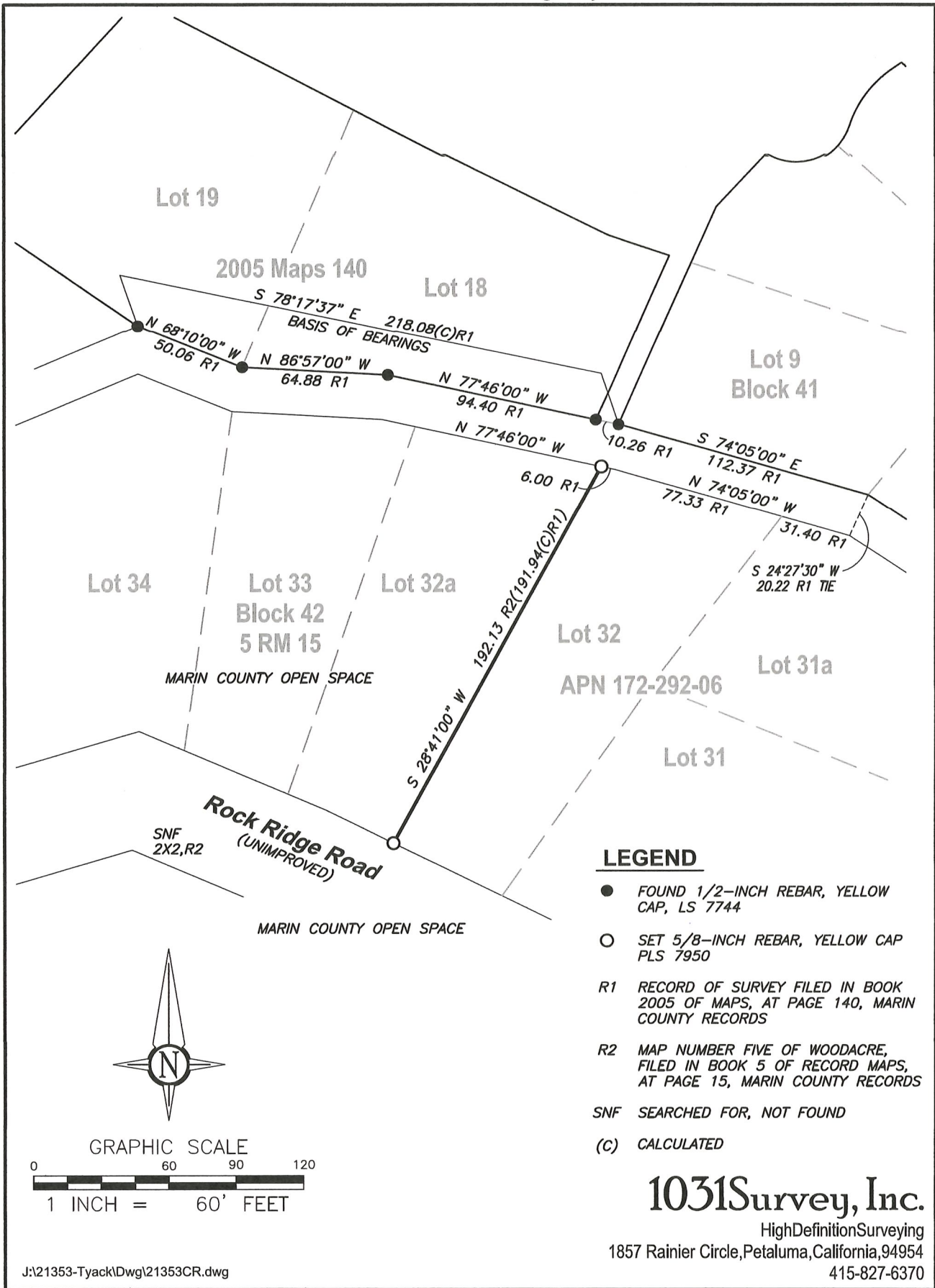
and examined and filed 8/3/22

Signed T.W. Park P.L.S. or R.C.E. No. 8176

Title County Surveyor

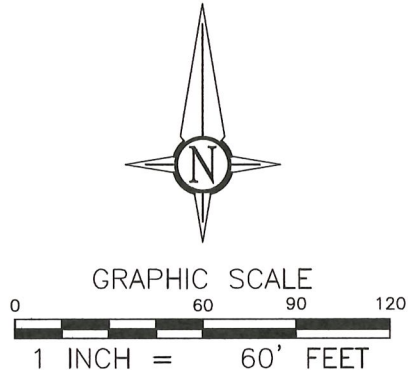
County Surveyor's Comment





LEGEND

- FOUND 1/2-INCH REBAR, YELLOW CAP, LS 7744
- SET 5/8-INCH REBAR, YELLOW CAP PLS 7950
- R1 RECORD OF SURVEY FILED IN BOOK 2005 OF MAPS, AT PAGE 140, MARIN COUNTY RECORDS
- R2 MAP NUMBER FIVE OF WOODACRE, FILED IN BOOK 5 OF RECORD MAPS, AT PAGE 15, MARIN COUNTY RECORDS
- SNF SEARCHED FOR, NOT FOUND
- (C) CALCULATED



1031Survey, Inc.

HighDefinitionSurveying
1857 Rainier Circle, Petaluma, California, 94954
415-827-6370