

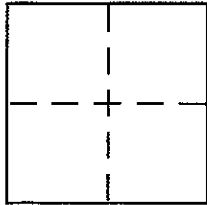
CORNER RECORD

Document Number APN 172-241-49

City of UNINCORPORATED

County of MARIN, California

Brief Legal Description SOUTHERLY LINE LOT 13, BLOCK 39 OF 5 RM 15, AKA SOUTHERLY LINE OF APN 172-241-49



CORNER TYPE

- Government Corner Control
- Meander Property
- Rancho Other
- Date of Survey _____

COORDINATES (Optional)

- N. _____
- E. _____
- Zone _____ NAD27 NAD83
- NAD83 Epoch _____
- Elev. _____
- Vert. Datum: NGVD29 NAVD88
- Meas. Units: Metric Imperial

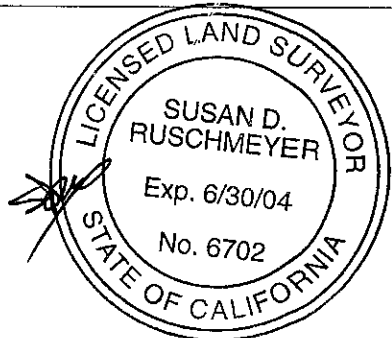
Corner -- Left as found Found and tagged Established Reestablished Rebuilt

Identification and type of corner found: Evidence used to identify or procedure used to establish or reestablish the corner:
THE SOUTHEAST AND SOUTHWEST CORNERS OF LOT 13, BLOCK 39 OF 5 RM 15 WERE MONUMENTED PER RECORD DATA AND BLOCK 39 BREAKDOWN AS ESTABLISHED ON 2002 MAPS 103, RECORDED ON 9-27-2002, MAP PREPARED BY PACIFIC LAND SURVEYS.

A description of the physical condition of the monument as found and as set or reset: BOTH THE SOUTHEAST AND SOUTHWEST CORNERS OF LOT 13, BLOCK 39, 5 RM 15, ARE SET 1/2" IRON PIPES, 30" LONG, TAGGED PLS 6702.

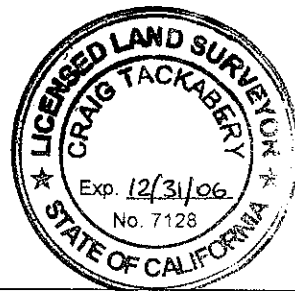
SURVEYOR'S STATEMENT

This Corner Record was prepared by me or under my direction in conformance with the Land Surveyor's Act on DECEMBER 20 2003.
Signed Susan D. Ruschmeyer P.L.S. or R.C.E. No. 6702
PACIFIC LAND SURVEYS



COUNTY SURVEYOR'S STATEMENT

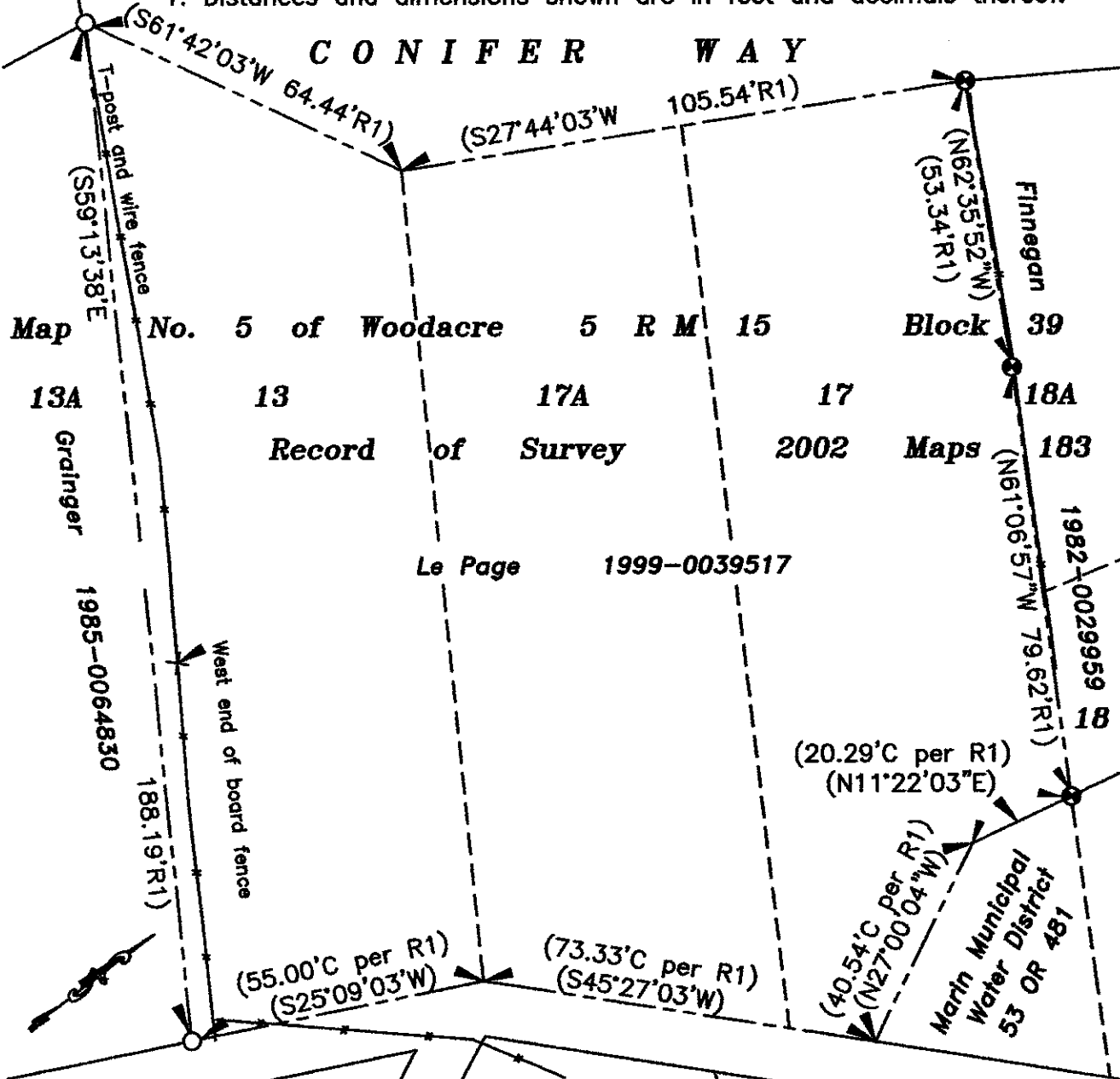
This Corner Record was received DECEMBER 22, 2003
and examined and filed DECEMBER 30, 2003
Signed Craig Tackabery P.L.S. or R.C.E. No. 7128
Title COUNTY SURVEYOR



County Surveyor's Comment _____

NOTES

1. Distances and dimensions shown are in feet and decimals thereof.



Map of Resubdivision of a Portion of Block 39
Map No. 5 of Woodacre 5 R M 57
 14A 15B 16A

LEGEND

- Found 1/2" Iron pipe PLS 6702 per 2002 M 183 (R1)
- Set 1/2" Iron pipe PLS 6702
- (R1) Record data per 2002 Maps 183
- C Calculated data per 2002 Maps 183
- Boundary of subject property
- Boundary of other lands
- Parcel line of record
- *-*- Existing fenceline

