



JERRICO ASSOCIATES

SUITE 27
77 MARK DRIVE
SAN RAFAEL, CA 94903

7276

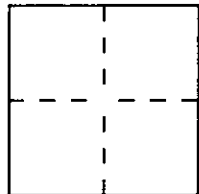
CORNER RECORD

Document Number 172-241-19, 20, 22-21, 54

City of Woodacre

County of Marin, California

Brief Legal Description Lot 4, 4b, 5 Block 39 Map No. 5 Woodacre 5 R.M. 15



CORNER TYPE

Government Corner Control
Meander Property
Rancho Other
Date of Survey April 20, 1998

COORDINATES (Optional)

N. _____
E. _____
Zone _____ Datum _____
Elev. _____

Corner — Left as found Found and tagged Established Reestablished Rebuilt

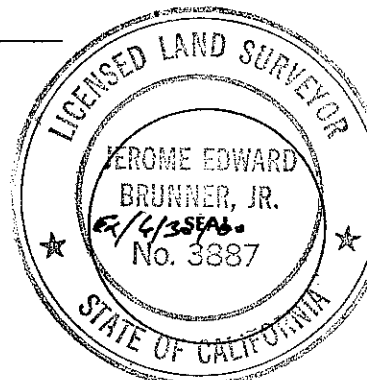
Identification and type of corner found; Evidence used to identify or procedure used to establish or reestablish the corner:
(A) (B) (C) (D) Found points in the field as shown.

A description of the physical condition of the monument as found and as set or reset:
(E) (F) (G) (H) (I) (J) Set # 5 rebar and cap LS 3887
(K) Set nail and tag LS 3887 (L) Set 'x' cut in conc.

SURVEYOR'S STATEMENT

This Corner Record was prepared by me or under my direction in conformance with the Land Surveyors' Act on April 20 19 98.

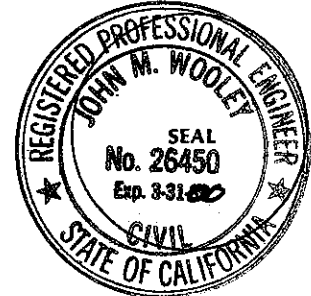
Signed [Signature] L.S. or R.C.E. Number LS 3887



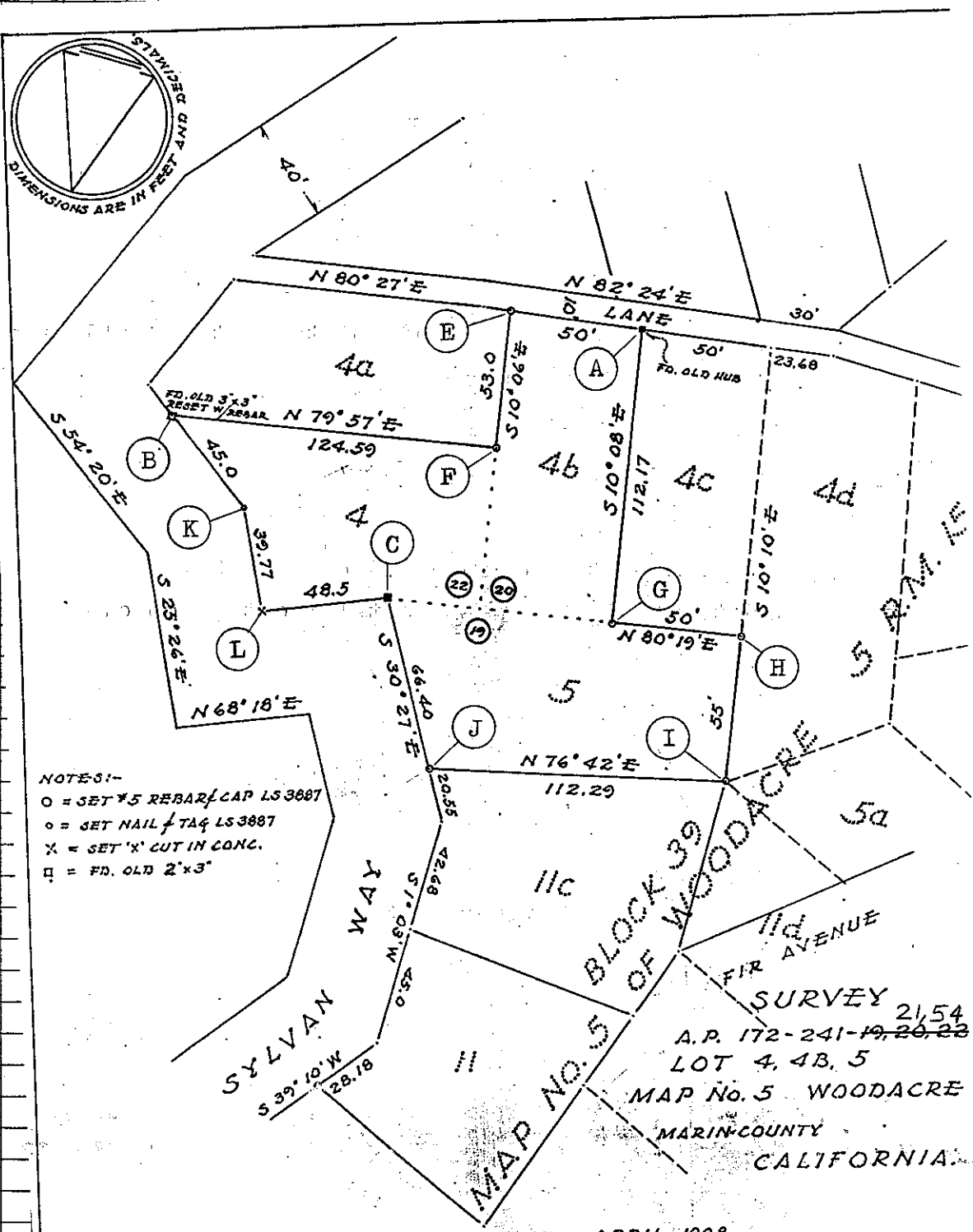
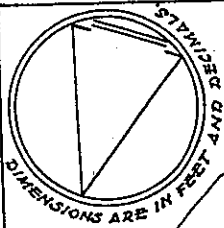
COUNTY SURVEYOR'S STATEMENT

This Corner Record was received MAY 11 19 98 and examined and filed MAY 12 19 98.

Signed [Signature] Title DEPUTY



County Surveyor's Comment _____



NOTES:-
 O = SET #5 REBAR CAP LS 3887
 o = SET NAIL TAG LS 3887
 X = SET 'X' CUT IN CONC.
 □ = FD. OLD 2'x3'

SURVEY 21,54
 A.P. 172-241-19, 20, 22
 LOT 4, 4B, 5
 MAP No. 5 WOODACRE
 MARIN COUNTY
 CALIFORNIA

APRIL 1998

JERRICO ASSOCIATES 77 MARK DRIVE SAN RAFAEL CALIFORNIA. M-7276