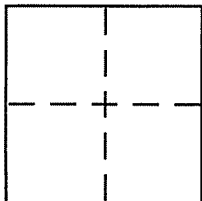


**CORNER RECORD**

Document Number 172-221-14  
City of Woodacre County of Marin, California

Brief Legal Description Portion of Lot 16, Block 17, SRM 15 per 33 Surveys 66



**CORNER TYPE**

Government Corner  Control   
Meander  Property   
Rancho  Other   
Date of Survey April 24, 2008

**COORDINATES (Optional)**

N. \_\_\_\_\_  
E. \_\_\_\_\_  
Zone \_\_\_\_\_ NAD27  NAD83   
NAD83 Epoch \_\_\_\_\_  
Elev. \_\_\_\_\_  
Vert. Datum: NGVD29  NAVD88   
Meas. Units: Metric  Imperial

Corner - Left as found  Found and tagged  Established  Reestablished  Rebuilt

Identification and type of corner found: Evidence used to identify or procedure used to establish or reestablish the corner:

See page 2 of 2

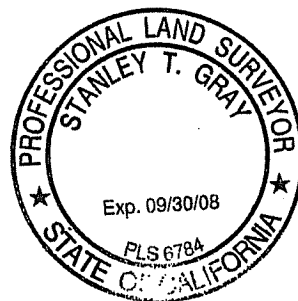
A description of the physical condition of the monument as found and as set or reset:

See page 2 of 2

**SURVEYOR'S STATEMENT**

This Corner Record was prepared by me or under my direction in conformance with the Land Surveyor's Act on 4/29/08

Signed [Signature] P.L.S or R.C.E. No. 6784



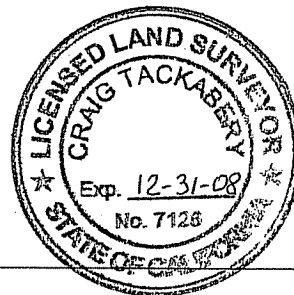
**COUNTY SURVEYOR'S STATEMENT**

This Corner Record was received 5-7-2008

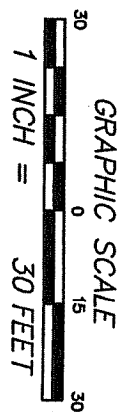
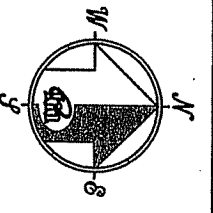
and examined and filed 6-5-2008

Signed [Signature] P.L.S or R.C.E. No. 7128

Title COUNTY SURVEYOR

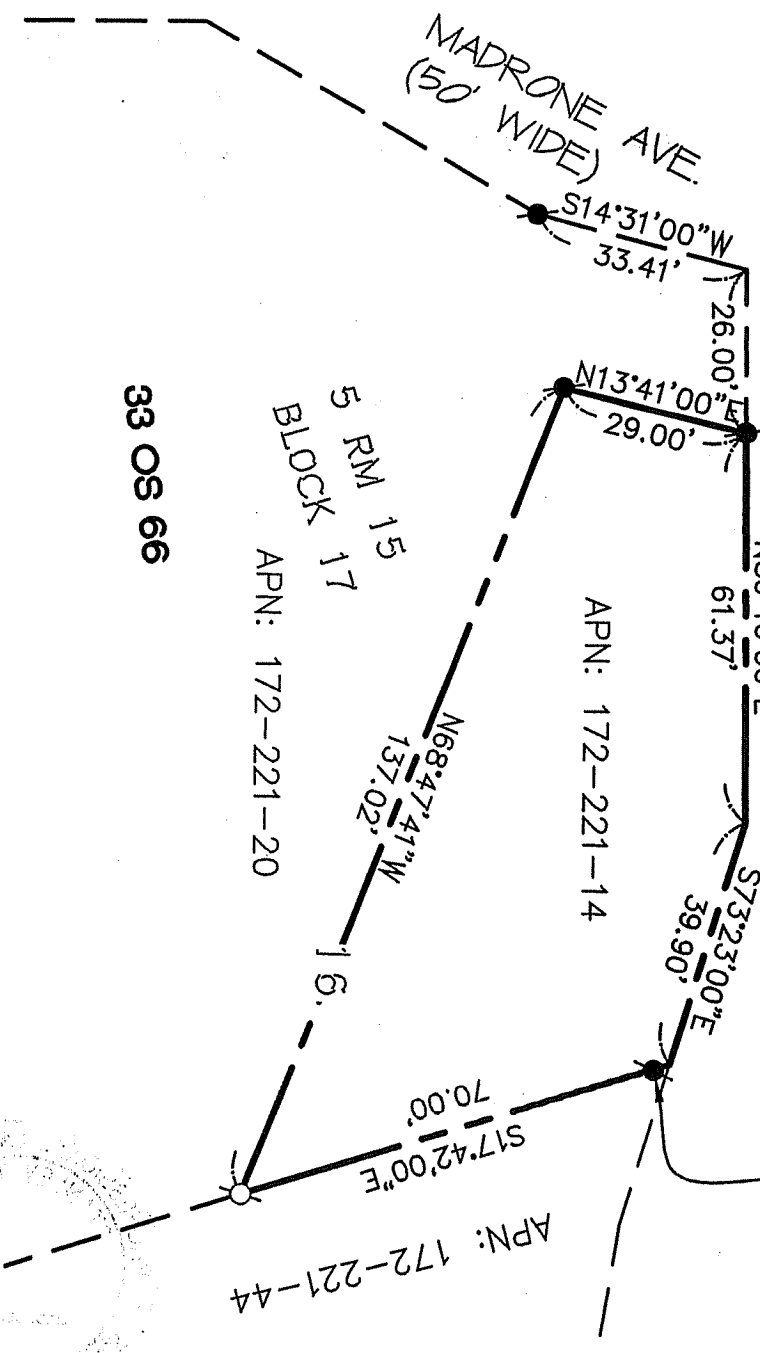


County Surveyor's Comment \_\_\_\_\_



ROCK RIDGE ROAD  
(50' WIDE)

FD MAGNALL & TAG, PLS  
6784 IN ASPHALT DRIVE,  
S17°42'00"E, 2.67' FROM  
CORNER PER [B]



**REFERENCE**

[A] "RECORD OF SURVEY, LANDS OF HEIMBERG, WOODACRE, MARIN CO., CALIFORNIA" FILED FOR RECORD 27 MARCH 1995 IN BOOK 33 OF SURVEYS, AT PAGE 66, MARIN COUNTY RECORDS.

[B] CORNER RECORD, APN 172-221-14, FILED APRIL 5, 2006.

**LEGEND**

- FOUND REBAR AND CAP, LS 5290 PER [A], EXCEPT AS NOTED
- SET REBAR AND CAP, PLS 6784

NOTE  
RECORD=MEASURED

**CORNER RECORD**

**MERIDIAN SURVEYING ENGINEERING, INC.**  
1812 LINCOLN STREET  
SAN FRANCISCO, CA 94133  
(415) 440-4131  
info@meridiansurvey.com

06010  
777 GRAND AVENUE, SUITE 202  
SAN RAFAEL, CA 94901  
(415) 456-5450