

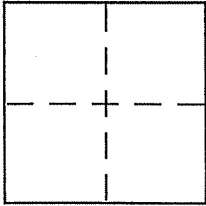
CORNER RECORD

Document Number 172-221-14

City of Woodacre

County of _____, California

Brief Legal Description Portion of Lot 16, Block 17, S RM 15, per 33 Surveys 66



CORNER TYPE

Government Corner Control
Meander Property
Rancho Other
Date of Survey _____

COORDINATES (Optional)

N. _____
E. _____
Zone _____ NAD27 NAD83
NAD83 Epoch _____
Elev. _____
Vert. Datum: NGVD29 NAVD88
Meas. Units: Metric Imperial

Corner - Left as found Found and tagged Established Reestablished Rebuilt

Identification and type of corner found: Evidence used to identify or procedure used to establish or reestablish the corner:

See page 2 of 2

A description of the physical condition of the monument as found and as set or reset:

See page 2 of 2

SURVEYOR'S STATEMENT

This Corner Record was prepared by me or under my direction in conformance with

the Land Surveyor's Act on 3121106

Signed [Signature] P.L.S or R.C.E. No. 6784

COUNTY SURVEYOR'S STATEMENT

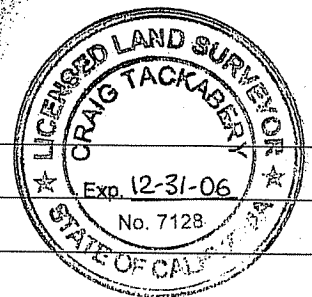
This Corner Record was received MARCH 23, 2006

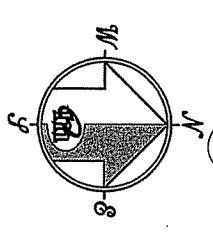
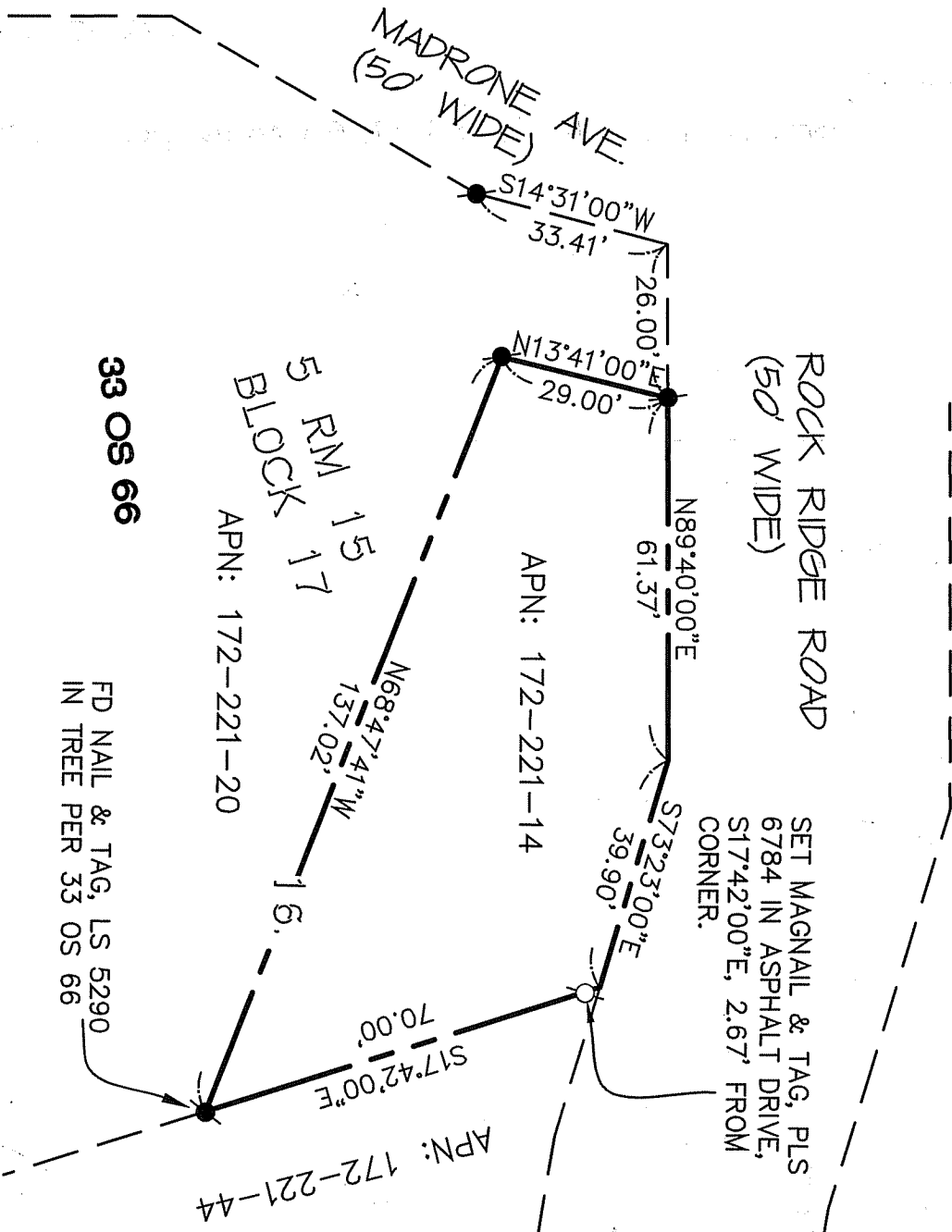
and examined and filed APRIL 5, 2006

Signed [Signature] P.L.S or R.C.E. No. 7128

Title COUNTY SURVEYOR

County Surveyor's Comment _____





ROCK RIDGE ROAD
(50' WIDE)

SET MAGNAIL & TAG, PLS
6784 IN ASPHALT DRIVE,
S17°42'00"E, 2.67' FROM
CORNER.

APN: 172-221-14

APN: 172-221-20

APN: 172-221-44

33 OS 66

FD NAIL & TAG, LS 5290
IN TREE PER 33 OS 66

5 RM 15
BLOCK 17

REFERENCE
"RECORD OF SURVEY, LANDS OF
HEIMBERG, WOODACRE, MARIN CO.,
CALIFORNIA" FILED FOR RECORD 27
MARCH 1995 IN BOOK 33 OF
SURVEYS, AT PAGE 66, MARIN
COUNTY RECORDS.

- LEGEND**
- FOUND REBAR AND CAP, LS 5290 PER 33 O.S. 66
 - SET MONUMENT AS NOTED

NOTE
RECORD=MEASURED

CORNER RECORD

MERIDIAN SURVEYING ENGINEERING, INC.
1812 UNION STREET
SAN FRANCISCO, CA 94123
(415) 440-4131
info@meridiansurvey.com

06010
777 GRAND AVENUE, SUITE 202
SAN RAFAEL, CA 94901
(415) 456-5460