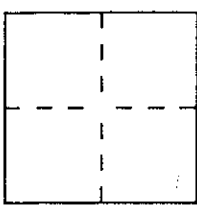


CORNER RECORD

Document Number A.P. # 172-201-09

City of _____ County of MARIN, California

Brief Legal Description LOT 1, BLOCK 36, MAP NO. 3, OF WOODACRE, 4 MAPS 63



CORNER TYPE

Government Corner Control
Meander Property
Rancho Other
Date of Survey DEC 18, 1992

COORDINATES (Optional)

N. _____
E. _____
Zone _____ Datum _____
Elev. _____

Corner — Left as found Found and tagged Established Reestablished Rebuilt

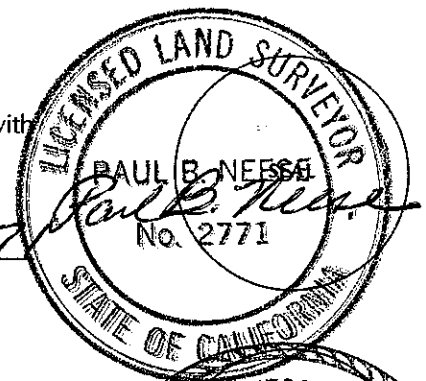
Identification and type of corner found: Evidence used to identify or procedure used to establish or reestablish the corner:
INTERSECTION OF COURSES N18°34'E 69.88' & N71°26'W
17.8', LOT 1, BLOCK 36, MAP NO. 3 OF WOODACRE
4 MAPS 63, MARIN COUNTY RECORDS.
CORNER REESTABLISHED FROM FOUND CORNERS
OF 4 P.M. 58.

A description of the physical condition of the monument as found and as set or reset: SET 1/2" RE
BAR WITH PLASTIC CAP STAMPED L.S. 2771

WOODACRE

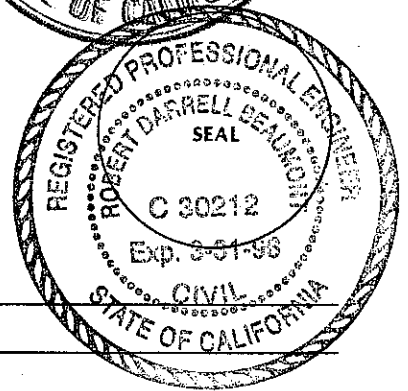
SURVEYOR'S STATEMENT

This Corner Record was prepared by me or under my direction in conformance with
the Land Surveyors' Act on DEC. 18 19 92
Signed Paul B. Neesse L.S. or R.C.E. Number L.S. 2771

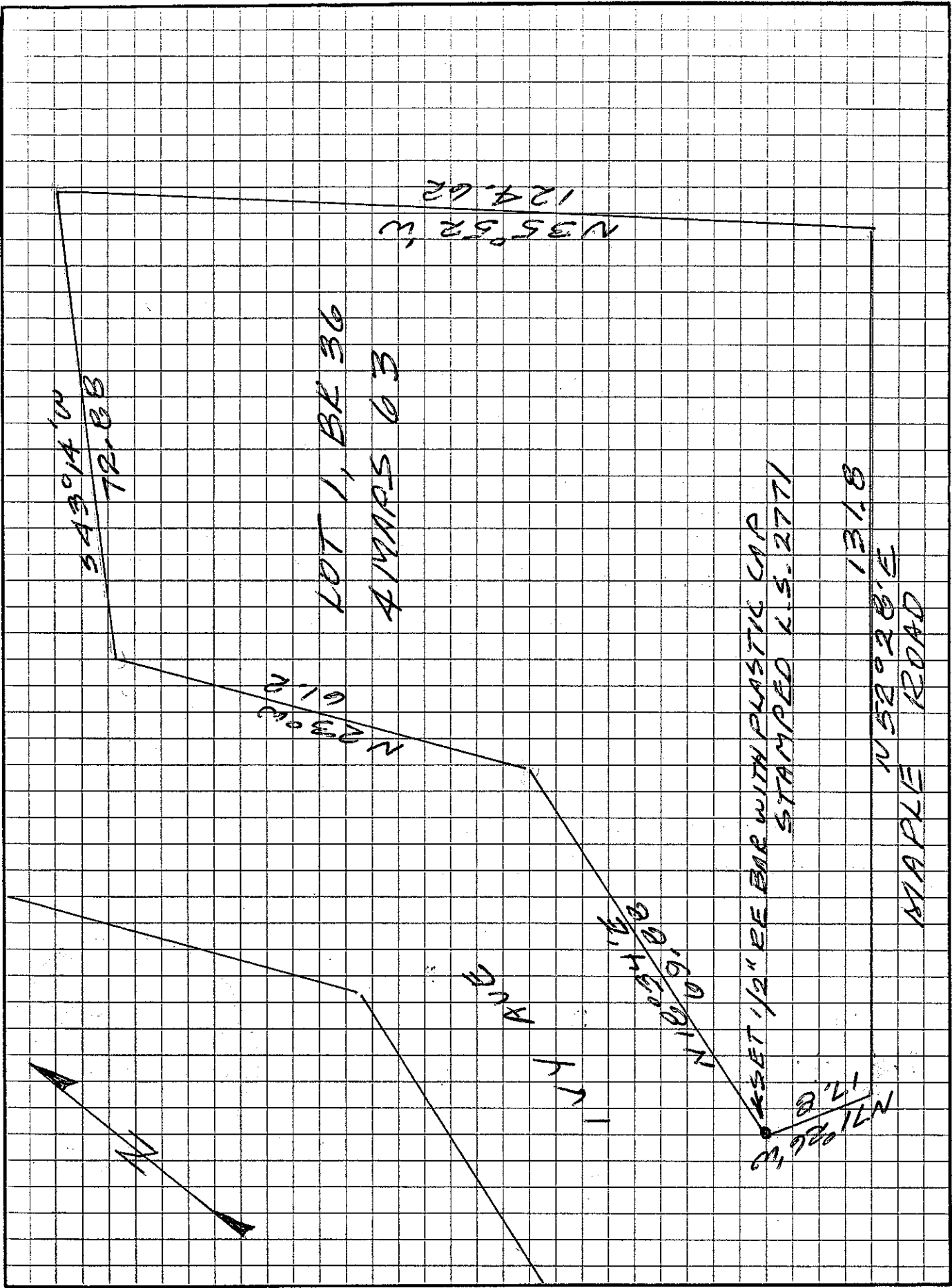


COUNTY SURVEYOR'S STATEMENT

This Corner Record was received 1-4 19 93 and examined
and filed 1-4 19 93
Signed RDB Title DCS



County Surveyor's Comment _____

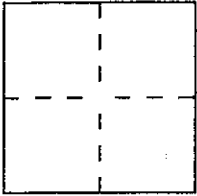


CORNER RECORD

Document Number A.P.# 172-201-09

City of _____ County of MARIN, California

Brief Legal Description LOT 1, BLOCK 36, MAP NO. 3 OF WOODACRE, 4 MAPS 63



CORNER TYPE

Government Corner Control
Meander Property
Rancho Other
Date of Survey DEC. 18, 1992

COORDINATES
(Optional)

N. _____
E. _____
Zone _____ Datum _____
Elev. _____

Corner — Left as found Found and tagged Established Reestablished Rebuilt

Identification and type of corner found: Evidence used to identify or procedure used to establish or reestablish the corner:
INTERSECTION OF COURSES N23°W 61.2' & N18°34'E
69.88, LOT 1, BLOCK 36, MAP NO. 3 OF WOODACRE
4 MAPS 63, MARIN COUNTY RECORDS.
CORNER REESTABLISHED FROM FOUND CORNER
OF 4 P.M. 58

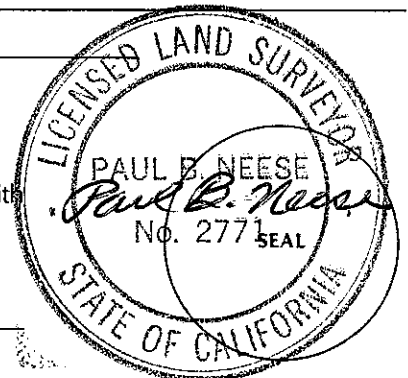
A description of the physical condition of the monument as found and as set or reset: SET 1/2" RE BAR
WITH PLASTIC CAP STAMPED L.S. 2771

WOODACRE

SURVEYOR'S STATEMENT

This Corner Record was prepared by me or under my direction in conformance with
the Land Surveyors' Act on DEC 18 1992

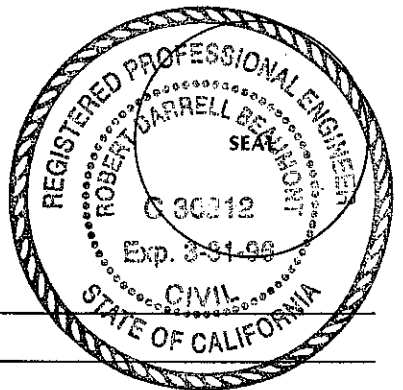
Signed Paul B. Neese L.S. or R.C.E. Number L.S. 2771



COUNTY SURVEYOR'S STATEMENT

This Corner Record was received 1-4 1993 and examined
and filed 1-4 1992.

Signed _____ Title _____



County Surveyor's Comment _____

