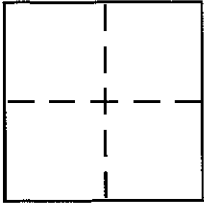


CORNER RECORD

Document Number APN.172-191-07

City of UNINCORPORATED WOODACRE County of MARIN, California

Brief Legal Description LOT 5, BLK. 26. "MAP THREE OF WOODACRE, MARIN CO.", 4 R.M. 63.



CORNER TYPE

Government Corner Control
Meander Property
Rancho Other
Date of Survey 10/1/03

COORDINATES (Optional)

N. _____
E. _____
Zone _____ NAD27 NAD83
NAD83 Epoch _____
Elev. _____
Vert. Datum: NGVD29 NAVD88
Meas. Units: Metric Imperial

Corner - Left as found Found and tagged Established Reestablished Rebuilt

Identification and type of corner found: Evidence used to identify or procedure used to establish or reestablish the corner:
FOUND CORNERS AS INDICATED HEREON. FIELD SURVEY TO CONFIRM FOUND CORNERS AND RECORD INFORMATION TO REESTABLISH AND ESTABLISH CORNERS AS INDICATED.

A description of the physical condition of the monument as found and as set or reset:
ALL FOUND CORNERS WERE UNDISTURBED.

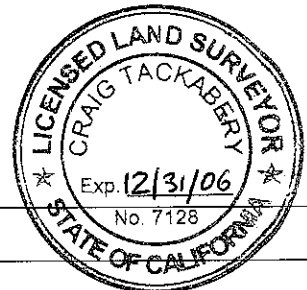
SURVEYOR'S STATEMENT

This Corner Record was prepared by me or under my direction in conformance with the Land Surveyor's Act on OCTOBER 1, 2003
Signed [Signature] P.L.S or R.C.E. No. PLS 6234



COUNTY SURVEYOR'S STATEMENT

This Corner Record was received OCTOBER 7, 2003
and examined and filed OCTOBER 16, 2003
Signed [Signature] P.L.S or R.C.E. No. 7128
Title COUNTY SURVEYOR



County Surveyor's Comment _____



SCALE 1" = 40' ±

SET 1/2" PIN
CAP "LS6234"

FD 1/2" PIN
CAP "LS6234"
PER 29 O.S. 92

FD 1/2" PIN
CAP "LS6234"
PER 29 O.S. 92

FD 1/2" PIN
CAP "LS6234"
PER 29 O.S. 92

FD 3/4" I.P.
"LS 3775"
PER 15 O.S. 13



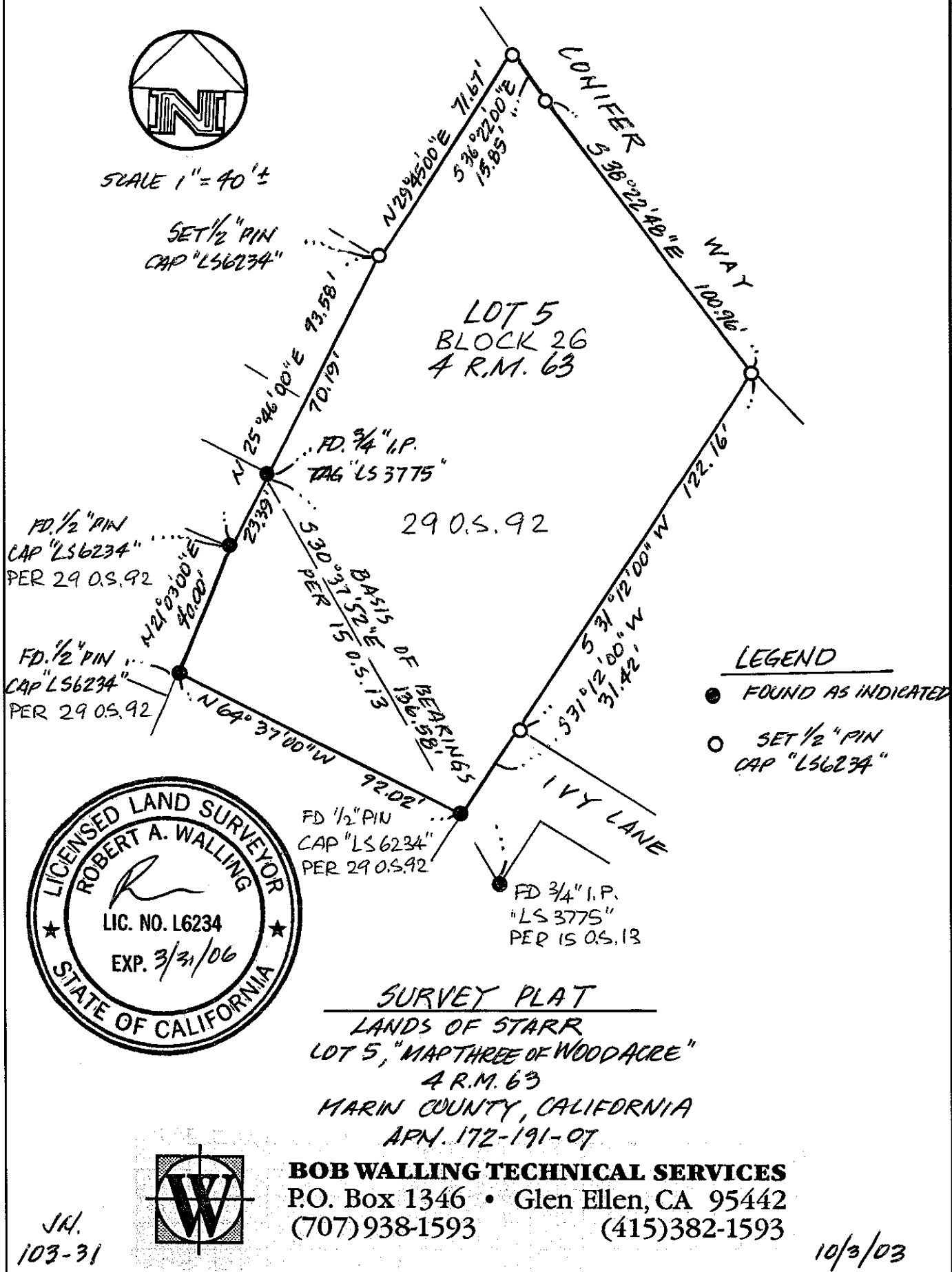
SURVEY PLAT
LANDS OF STARR
LOT 5, "MAP THREE OF WOODACRE"
4 R.M. 63
MARIN COUNTY, CALIFORNIA
APN. 172-191-07

BOB WALLING TECHNICAL SERVICES
P.O. Box 1346 • Glen Ellen, CA 95442
(707) 938-1593 (415) 382-1593



JN.
103-31

10/3/03



LEGEND

- FOUND AS INDICATED
- SET 1/2" PIN
CAP "LS6234"