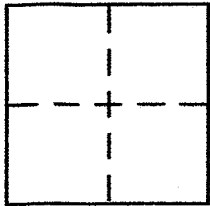


CORNER RECORD

APN. 172-104-07
Document Number

City of UNINCORPORATED WOODACRE County of MARIN, California

Brief Legal Description PTN. LOT 11, 5 MAPS 15, M.C.R. & DN. 2001-046743 M.C.R.



CORNER TYPE

Government Corner Control
Meander Property
Rancho Other
Date of Survey 11/1/2005

COORDINATES (Optional)

N. _____
E. _____
Zone _____ NAD27 NAD83
NAD83 Epoch _____
Elev. _____
Vert. Datum: NGVD29 NAVD88
Meas. Units: Metric Imperial

Corner - Left as found Found and tagged Established Reestablished Rebuilt

Identification and type of corner found: Evidence used to identify or procedure used to establish or reestablish the corner:
FOUND 1/2" PIN. WITH TAG "PLS 6234" AND MONUMENT WELLS AS SHOWN AND DESCRIBED ON 2005 MAPS 26, M.C.R. USED FIELD SURVEY TO VERIFY RECORD LOCATIONS AND SET CORNERS AS SHOWN HEREON.

A description of the physical condition of the monument as found and as set or reset:
ALL CORNERS RECOVERED WERE UNDISTURBED AND IN RECORD POSITIONS PER 2005 MAPS 26, M.C.R.

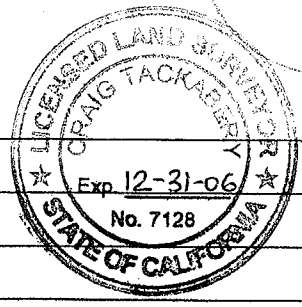
SURVEYOR'S STATEMENT

This Corner Record was prepared by me or under my direction in conformance with the Land Surveyor's Act on NOVEMBER 1, 2005
Signed [Signature] P.L.S or R.C.E. No. 6234

COUNTY SURVEYOR'S STATEMENT

This Corner Record was received DECEMBER 27, 2005
and examined and filed JANUARY 6, 2006
Signed [Signature] P.L.S or R.C.E. No. 7128
Title COUNTY SURVEYOR

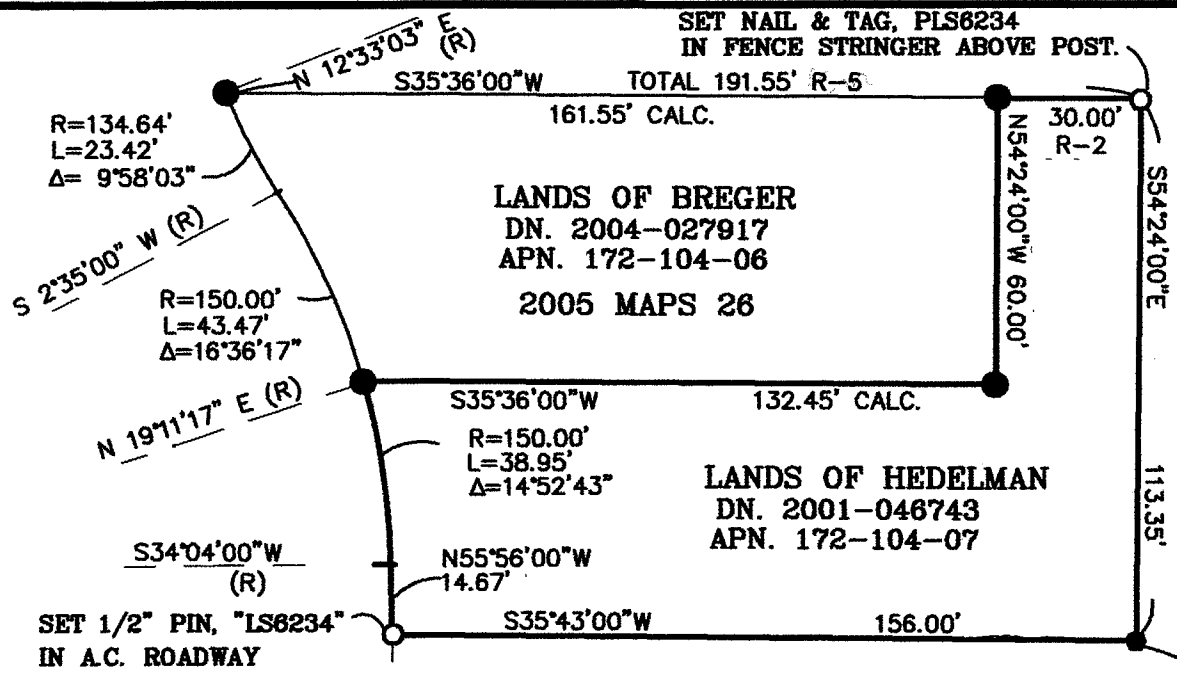
County Surveyor's Comment _____



SEAL

SET NAIL & TAG, PLS6234
IN FENCE STRINGER ABOVE POST.

LANDS OF COUNTY OF MARIN
APN. 172-104-02



LANDS OF BREGER
DN. 2004-027917
APN. 172-104-06
2005 MAPS 26

LANDS OF HEDELMAN
DN. 2001-046743
APN. 172-104-07

SET 1/2" PIN, "LS6234"
IN A.C. ROADWAY

FOUND REMNANTS OF OLD IRON BOLT,
HELD AS SAME PER O.J.W. SURVEY
#18735 AND 22 O.S. 34.

CASTLE ROCK AVE.
R/W VARIES

LANDS OF COUNTY OF MARIN

FOUND MONUMENT CASTINGS IN AC ROAD
WITH NO MONUMENT AT 2.5' DEPTH.
LOCATED CENTER OF CASTING FOR RECORD
AND TIE AS SHOWN HEREON.

LEGEND

- FOUND 1/2" PIN WITH TAG "PLS6234"
PER 2005 M 26

SURVEY PLAT

LANDS OF HEDELMAN

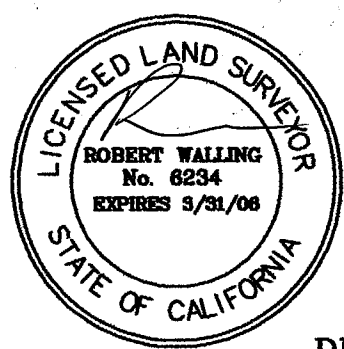
DOCUMENT NUMBER 2001-046743

MARIN COUNTY, CALIFORNIA"

APN. 172-104-07

DECEMBER 2005

SCALE 1"=40'



BOB WALLING TECHNICAL SERVICES
25205 WAGHORN RD. NW, POULSBO, WA. 98370
360 697-2265