

# CORNER RECORD

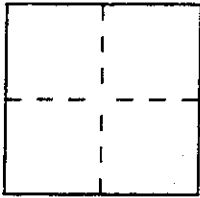
Document Number APN 172-091-45

City of Woodacre

County of Marin

, California

Brief Legal Description Lots 10, 15 & 15A in Block 21 Woodacre Map No. 5, 5RM15



### CORNER TYPE

Government Corner  Control   
Meander  Property   
Rancho  Other   
Date of Survey Dec. 19, 1999

### COORDINATES (Optional)

N. \_\_\_\_\_  
E. \_\_\_\_\_  
Zone \_\_\_\_\_ Datum \_\_\_\_\_  
Elev. \_\_\_\_\_

Corner — Left as found  Found and tagged  Established  Reestablished  Rebuilt

Identification and type of corner found: Evidence used to identify or procedure used to establish or reestablish the corner:  
Found 1 1/4" Iron Pipes Per 19PM99

A description of the physical condition of the monument as found and as set or reset: \_\_\_\_\_

Set 3/4" iron pipes with plastic cap RCE No. 15945

Set 3/4" Ree-Bars

### SURVEYOR'S STATEMENT

This Corner Record was prepared by me or under my direction in conformance with the Land Surveyors' Act on December 29 1999.

Signed W. Edward Nite L.S. or R.C.E. Number RCE 15945

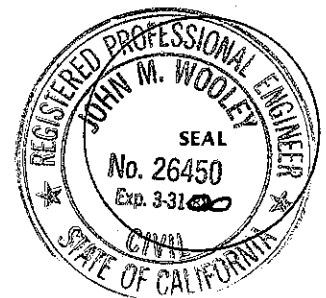


### COUNTY SURVEYOR'S STATEMENT

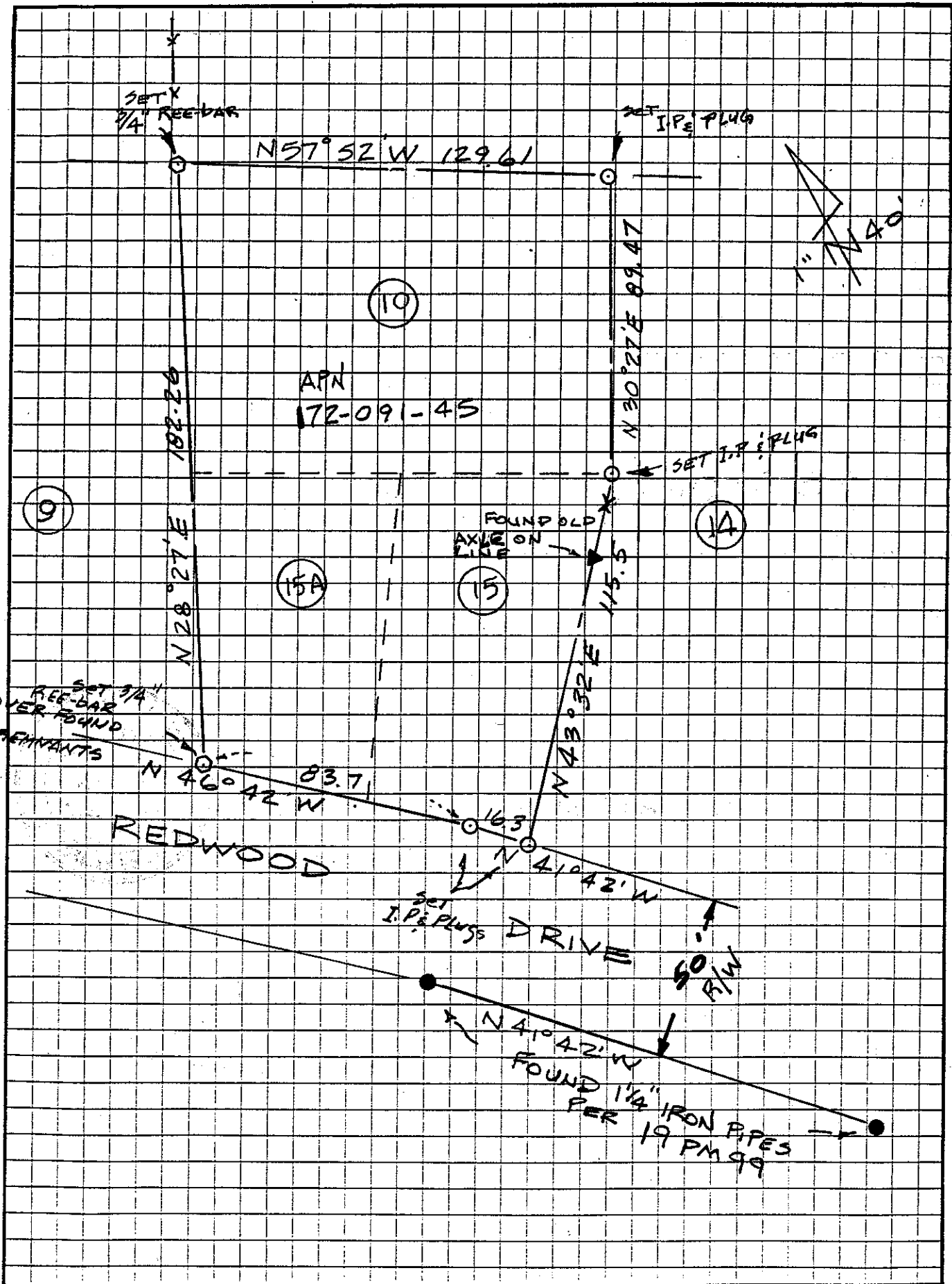
This Corner Record was received January 3 2000 and examined

and filed January 6 2000

Signed John M. Woolley Title Deputy



County Surveyor's Comment \_\_\_\_\_



APN  
172-091-45

SET X  
3/4" REE-BAR

SET I.P.E. PLUG

N57°52'W 129.61

N28°27'E 182.24

N30°27'E 89.47

SET I.P.E. PLUG

FOUND OLD  
AXLE FLANGE ON

115.5

SET 3/4"  
REE-BAR  
OVER FOUND  
I.P. REMNANTS

N46°42'W 83.7

N43°32'E

REDWOOD

SET  
I.P.E. PLUGS

DRIVE

50'  
R/W

N41°42'W

FOUND 1 1/4" IRON PIPES  
PER 19 PM 99