



JERRICO ASSOCIATES

SUITE 27
77 MARK DRIVE
SAN RAFAEL, CA 94903

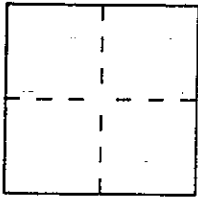
7057

CORNER RECORD

Document Number 172-062-10

City of Woodacre County of Marin, California

Brief Legal Description Lots 6 & 7 Block 4 Woodacre Map No. 3 4 RM 63



CORNER TYPE

Government Corner Control
Meander Property
Rancho Other
Date of Survey December 1, 1993

COORDINATES (Optional)

N. _____
E. _____
Zone _____ Datum _____
Elev. _____

Corner — Left as found Found and tagged Established Reestablished Rebuilt

Identification and type of corner found: Evidence used to identify or procedure used to establish or reestablish the corner:
Found County Monuments establishing the center
line of Railroad Avenue derived from found original (2' offset)
stone monuments in their survey of 1977 ... by 14 OS 57

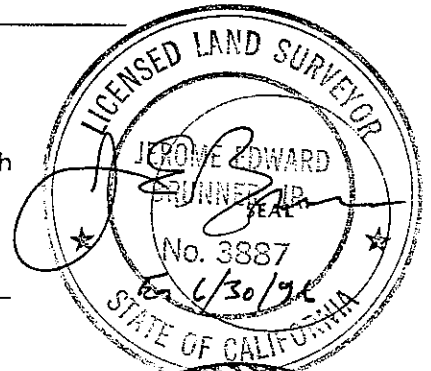
A description of the physical condition of the monument as found and as set or reset: _____

(A) (B) (C) (D) Set #5 rebar and cap LS 3887

SURVEYOR'S STATEMENT

This Corner Record was prepared by me or under my direction in conformance with the Land Surveyors' Act on Dec. 1, 1993.

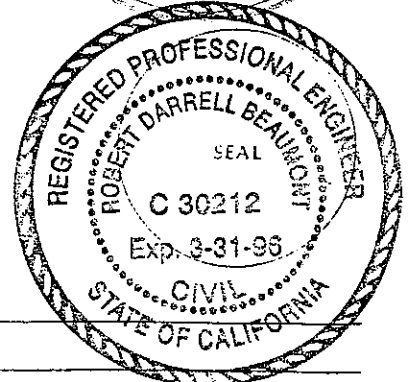
Signed [Signature] L.S. or R.C.E. Number LS 3887



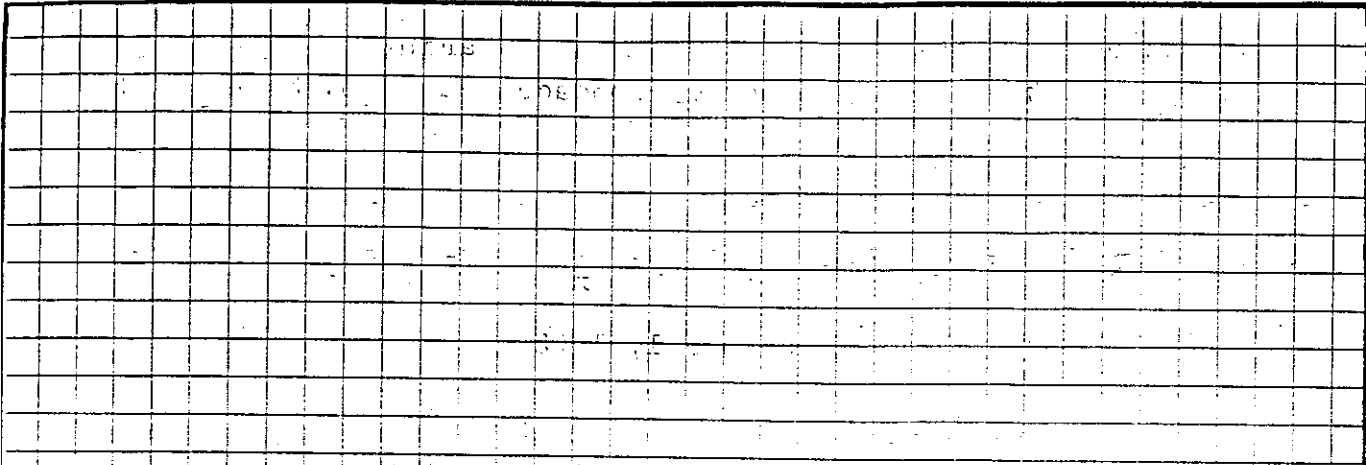
COUNTY SURVEYOR'S STATEMENT

This Corner Record was received 12-2 1993 and examined and filed 12-3 1993.

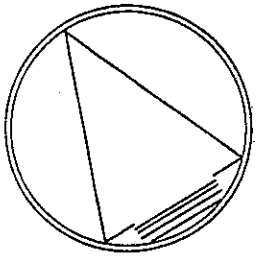
Signed [Signature] Title DCS



County Surveyor's Comment _____



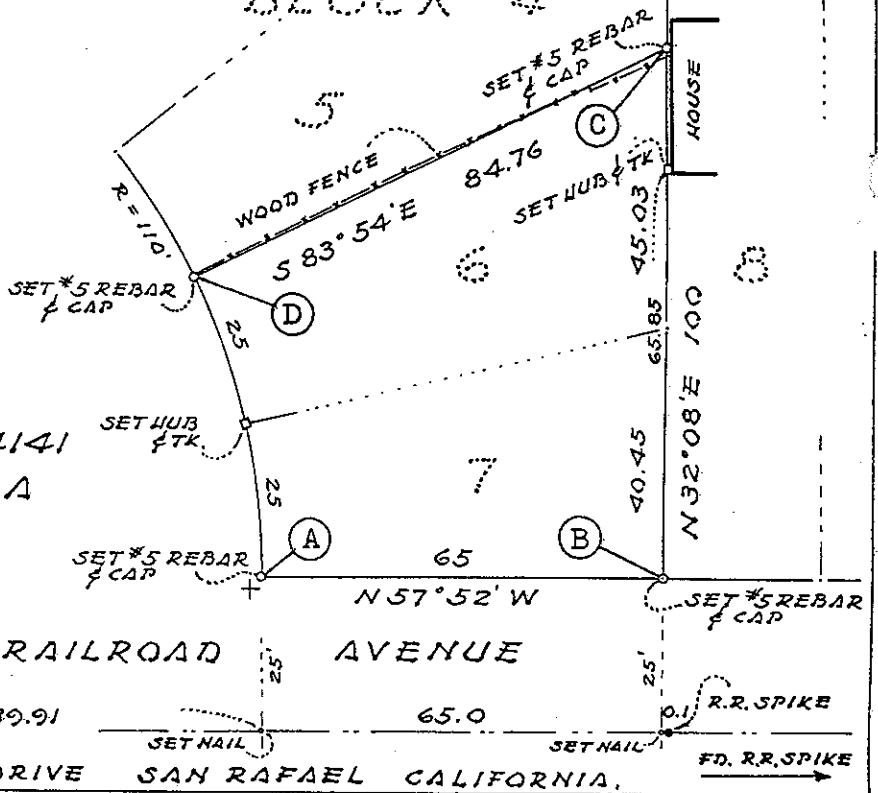
WOODACRE MAP NO. 3 4 RM 63
BLOCK 4



SURVEY LOT 6 & 7
AP 172-062-10
LANDS OF PALMER 92-84141
WOODACRE CALIFORNIA

DECEMBER 1993

CAP = LS 3887



JERRICO ASSOCIATES 77 MARK DRIVE SAN RAFAEL CALIFORNIA.

S-7057