

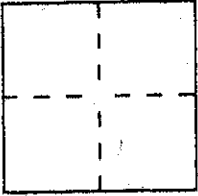
**CORNER RECORD**

Document Number 170-162-02

City of SAN GERONIMO

County of MARIN, California

Brief Legal Description LOT 14, "SAN GERONIMO VALLEY UNIT ONE, 14 RM 18



**CORNER TYPE**

Government Corner  Control   
Meander  Property   
Rancho  Other   
Date of Survey JULY 12, 1995

**COORDINATES  
(Optional)**

N. \_\_\_\_\_  
E. \_\_\_\_\_  
Zone \_\_\_\_\_ Datum \_\_\_\_\_  
Elev. \_\_\_\_\_

Corner — Left as found  Found and tagged  Established  Reestablished  Rebuilt

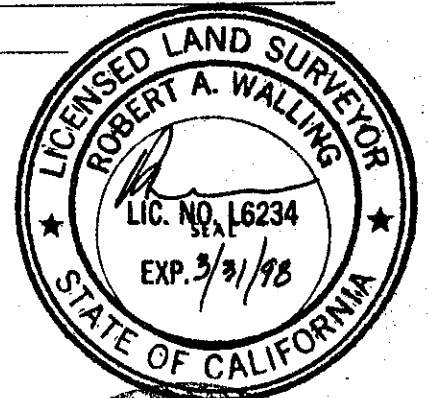
Identification and type of corner found: Evidence used to identify or procedure used to establish or reestablish the corner:  
FOUND STANDARD STREET MONUMENTS PER 14 RM 18 AND FRONT CORNERS  
AS CALCULATED FROM SUBDIVISION MAP. SET PROPERTY CORNERS AND  
LINE POINTS FROM SAME CALCULATIONS FROM MAP.

A description of the physical condition of the monument as found and as set or reset: ALL FOUND POINTS  
IN GOOD, UNDISTURBED CONDITION. FRONT CORNERS WERE MISSING TAGS.

**SURVEYOR'S STATEMENT**

This Corner Record was prepared by me or under my direction in conformance with  
the Land Surveyors' Act on JULY 12, 1995 1995

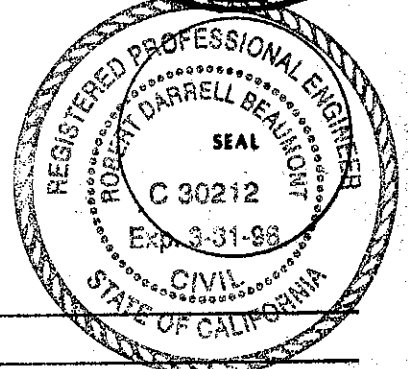
Signed Robert Walling L.S. or R.C.E. Number PLS6234



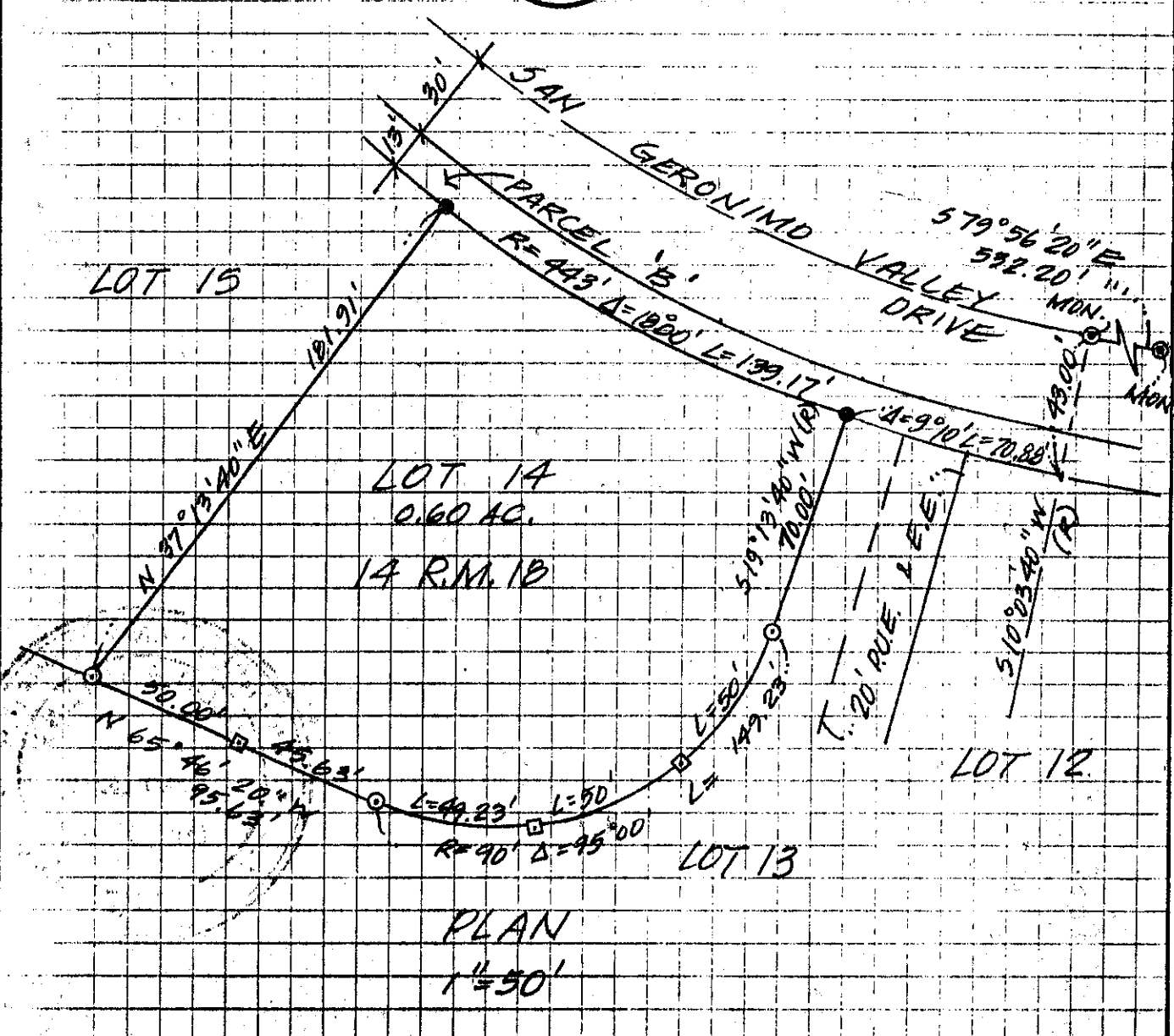
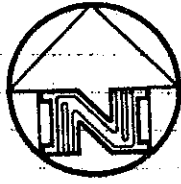
**COUNTY SURVEYOR'S STATEMENT**

This Corner Record was received 7-24 1995 and examined  
and filed 7-24 1995.

Signed [Signature] Title PCS



County Surveyor's Comment \_\_\_\_\_  
\_\_\_\_\_  
\_\_\_\_\_



LEGEND

- FD 3/4" IRON PIPE, NO TAG
- ⊙ STD. STREET MONUMENT PER 14 R.M. 1B
- ⊙ SET 1/2" IRON PIN W/CAP "LS6234"
- ⊠ SET 2" X 2" HUB W/TACK