

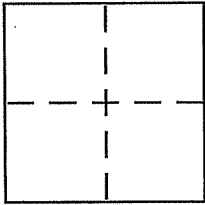
CORNER RECORD

Document Number AP# 170-022-03

City of Lagunitas

County of Marin, California

Brief Legal Description Lot 5 1 RM 136



CORNER TYPE

- Government Corner Control
- Meander Property
- Rancho Other
- Date of Survey _____

COORDINATES (Optional)

N. _____
 E. _____
 Zone _____ NAD27 NAD83
 NAD83 Epoch _____
 Elev. _____
 Vert. Datum: NGVD29 NAVD88
 Meas. Units: Metric Imperial

Corner - Left as found Found and tagged Established Reestablished Rebuilt

Identification and type of corner found: Evidence used to identify or procedure used to establish or reestablish the corner:

Found two standard street monuments per maps 136 / 15 of surveys page 55

A description of the physical condition of the monument as found and as set or reset:

Found four 3/4 i.p. with plastic plug l.s. 3971, Set 1 5/8" rebar and plastic cap l.s. 6784 as shown on sheet 1

SURVEYOR'S STATEMENT

This Corner Record was prepared by me or under my direction in conformance with

the Land Surveyor's Act on 2 / 8 07

Signed [Signature] P.L.S or R.C.E. No. 6784



COUNTY SURVEYOR'S STATEMENT

This Corner Record was received FEBRUARY 12, 2007

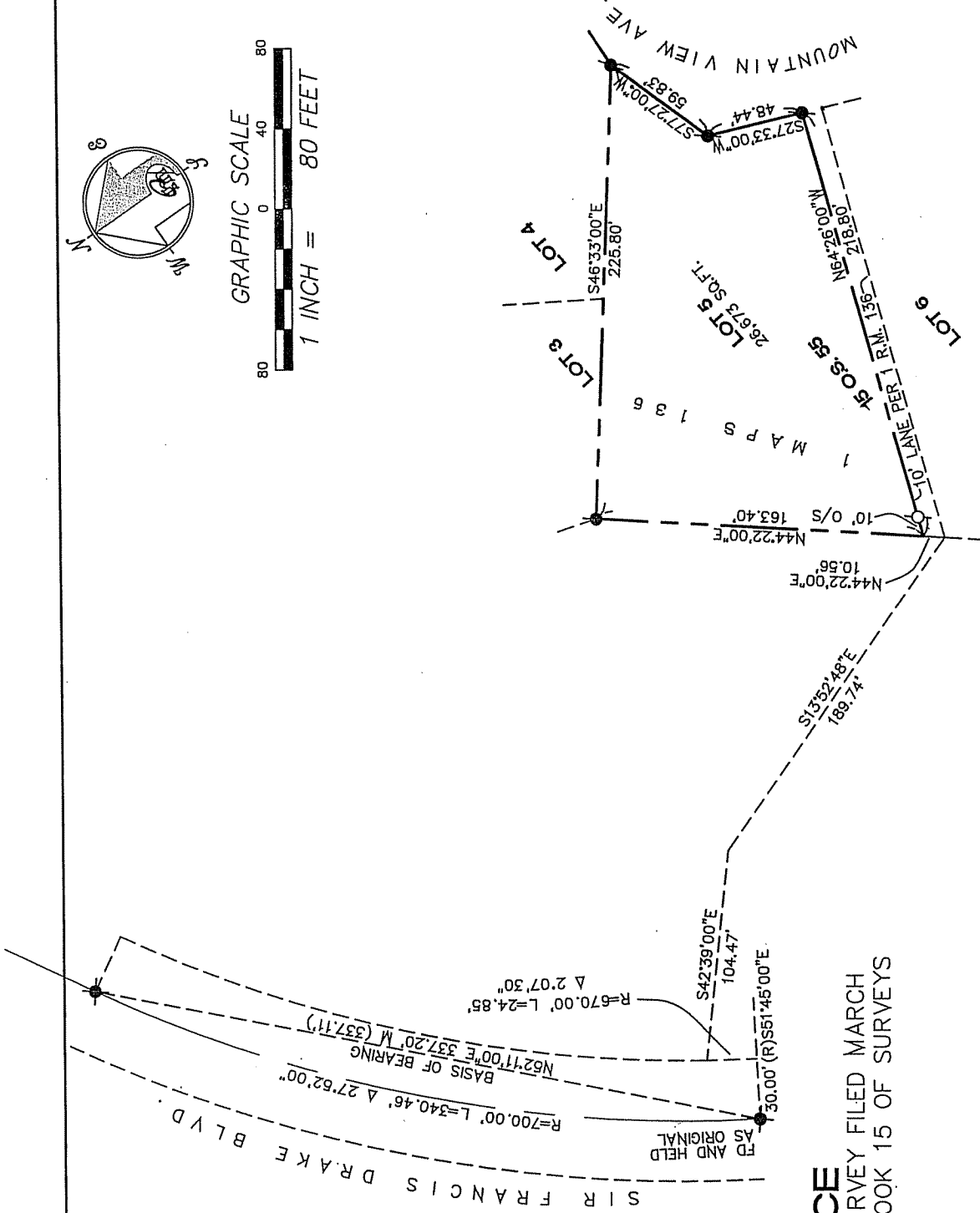
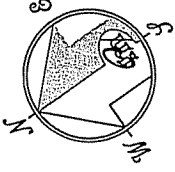
and examined and filed MARCH 26, 2007

Signed [Signature] P.L.S or R.C.E. No. 7128

Title COUNTY SURVEYOR



County Surveyor's Comment _____



REFERENCE
 RECORD OF SURVEY FILED MARCH
 5th 1979 IN BOOK 15 OF SURVEYS
 AT PAGE 55

LEGEND

- ⊗ FOUND STANDARD CITY MONUMENT
- ⊙ FOUND 3/4" IRON PIPE WITH PLASTIC CAP, LS 3971
- ⊚ SET 5/8" REBAR WITH CAP, PLS 6784

NOTE
 RECORD=MEASURED

CORNER RECORD

**MERIDIAN SURVEYING
 ENGINEERING, INC.**

1812 UNION STREET
 SAN FRANCISCO, CA 94123
 (415) 440-4131
 info@meridiansurvey.com

777 GRAND AVENUE, SUITE 202
 SAN RAFAEL, CA 94901
 (415) 456-6450