

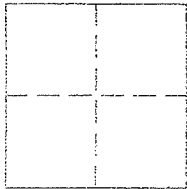
# CORNER RECORD

Agency Index 21-157  
Document Number APN 169-161-20

City of NEAR SAN GERONIMO County of MARIN, California  
Brief Legal Description: LOT 31 AND A PORTION LOT 33, 5 RM 45, MAP No. 6 OF SAN GERONIMO

### CORNER TYPE

### COORDINATES (Optional)



- Government Corner
- Meander
- Rancho
- Control
- Property
- Other

Date of Survey 1-21-21

N. \_\_\_\_\_ E. \_\_\_\_\_

Elevation \_\_\_\_\_

Units:  Metric  U.S. Survey Foot

Horizontal Datum: \_\_\_\_\_

Zone \_\_\_\_\_ Epoch Date \_\_\_\_\_

Vert. Datum: \_\_\_\_\_

Complies with Public Resources Code §§8801-8819

Complies with Public Resources Code §§8890-8902

PLS Act Ref.:  6765(d)  8771  8773  Other

Corner/  
Monument:  Left as found  Established  Rebuilt  Pre-Construction  
 Found and tagged  Reestablished  Referenced  Post-Construction

Narrative of Corner identified and monument as found, reset, replaced, or removed.

See sheet #2 for description(s):

RECOVERED MONUMENTS AS SHOWN ON 2020 MAPS **227** AND 2007 MAPS 80 AND ON REVERSE

SET 1/2" IP AND TAG PLS 5296, AND SET 20d NAIL & TAG PLS 5296 AS SHOWN ON REVERSE.

### SURVEYOR'S STATEMENT

This Corner record was prepared by me or under my direction in conformance with

the Land Surveyor's Act on APRIL 21, 2021

Signed [Signature] P.L.S. or R.C.E. No. PLS 5296



### COUNTY SURVEYOR'S STATEMENT

This Corner Record was received 10-4-21

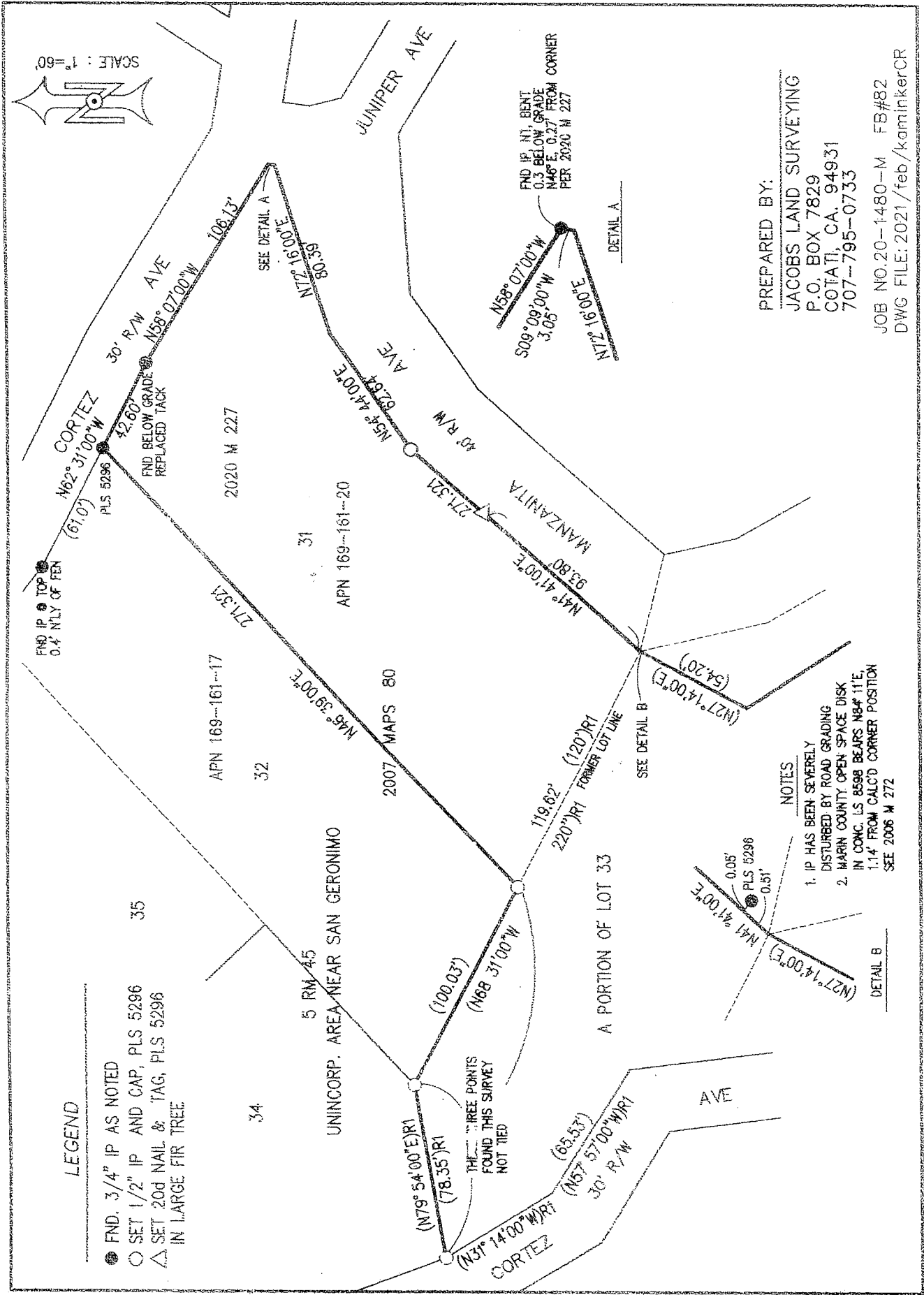
and examined and filed 1-31-21

Signed [Signature] P.L.S. or R.C.E. No. 9292

Title DEPUTY

County Surveyor's Comment





LEGEND

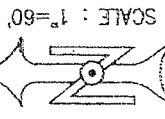
- FND. 3/4" IP AS NOTED
- SET 1/2" IP AND CAP, PLS 5296
- △ SET 20d NAIL & TAG, PLS 5296
- IN LARGE FIR TREE

NOTES

1. IP HAS BEEN SEVERELY DISTURBED BY ROAD GRADING
2. MARIN COUNTY OPEN SPACE DISK IN CONC. LS 8598 BEARS NB4°11'E, 1.14' FROM CALC'D CORNER POSITION SEE 2006 M 272

PREPARED BY:  
 JACOBS LAND SURVEYING  
 P.O. BOX 7829  
 COTATI, CA. 94931  
 707-795-0733

JOB NO. 20-1480-M FB#82  
 DWG FILE: 2021/feb/kaminkerCR



Agency Index

Document Number