

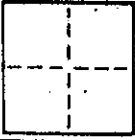
A.P.#169-141-14

CORNER RECORD

COUNTY OF MARIN T. _____ R. _____ MERIDIAN _____ CALIFORNIA

CORNER TYPE: GOVT. CORNER MEANDER RANCHO CONTROL OTHER

CORNER IDENTIFICATION -- DATE OF VISIT _____ 19____



CORNER -- LEFT AS FOUND FOUND AND TAGGED REESTABLISHED OBLITERATED CORNER REBUILT

PHYSICAL DESCRIPTION OF CORNER FOUND; EVIDENCE AND METHOD USED TO IDENTIFY OR REESTABLISH

SEE SKETCH BELOW

PHYSICAL DESCRIPTION OF MONUMENTS REBUILT OR PERPETUATED

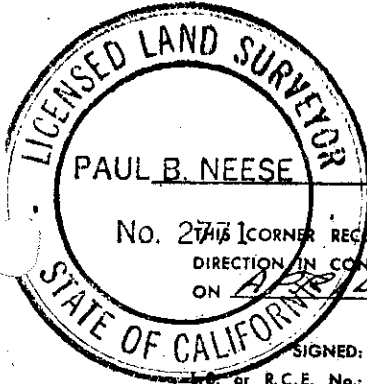
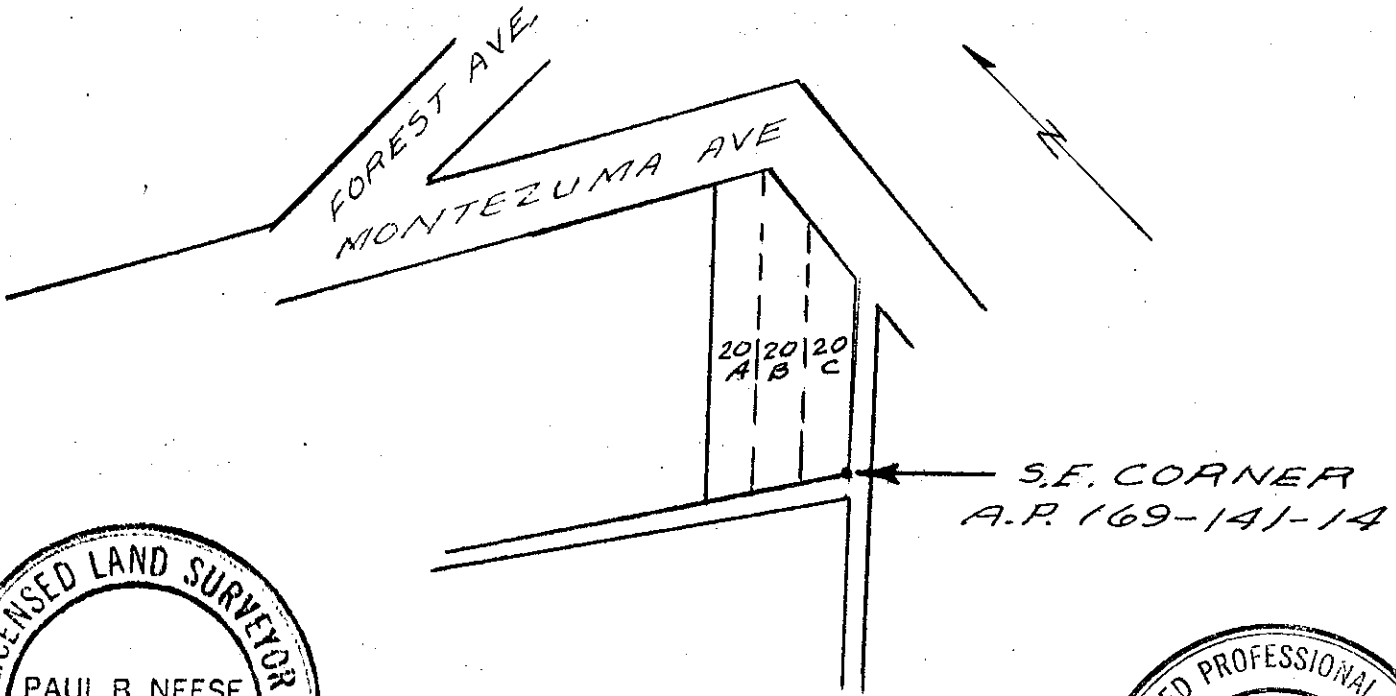
SET 1/2" RE BAR WITH PLASTIC CAP STAMPED L.S. 2771. S.E. CORNER LOT 20 C, BLOCK 4, MAP NO. 1, FOREST KNOLLS, A.R.M. 71

CALIFORNIA COORDINATE SYSTEM ORDER: FIRST SECOND THIRD

STATIONS USED: NGS (USC & GS) STATE COUNTY OTHER STATION _____ STATION _____

ZONE _____ ELEVATION _____ NORTHINGS (Y) _____ EASTINGS (X) _____

SKETCH: (Include reference tie or witness points, remarks and topo of area)



SURVEYOR'S CERTIFICATE

No. 2771 CORNER RECORD WAS PREPARED BY ME OR UNDER MY DIRECTION IN CONFORMANCE WITH THE LAND SURVEYORS ACT ON APRIL 14 1990

SIGNED: Paul B. Neese
 or R.C.E. No.: L.S. 2771

SEAL



COUNTY SURVEYOR'S CERTIFICATE

THE CORNER RECORD WAS RECEIVED AND EXAMINED AND FILED BY: Michael Bates
 TITLE: Deputy Road Commissioner

DOCUMENT No. _____ STATEMENT ON BACK OF SHEET YES NO