

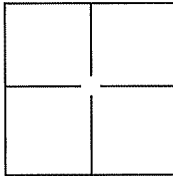
# CORNER RECORD

Document Number A.P.N. 169-141-07

City of Forest Knolls

County of Marin, California

Brief Legal Description Ptn. Lot 13 and Lot 14, 40 Montezuma Ave., 4 RM 71.



### CORNER TYPE

Government Corner  Control   
 Meander  Property   
 Rancho  Other

Date of Survey 5 December 2011

### COORDINATES(Optional)

N. \_\_\_\_\_  
 E. \_\_\_\_\_  
 Zone \_\_\_\_\_ NAD27  NAD83   
 NAD83 Epoch \_\_\_\_\_  
 Elev. \_\_\_\_\_  
 Vert. Datum: NGVD29  NADV88   
 Meas. Units: Metric  Imperial

Corner - Left as found  Found and tagged  Established  Reestablished  Rebuilt

Identification and type of corner found: Evidence used to identify or procedure used to establish or reestablish the corner:  
Found 1/2" Rebar and Yellow Cap, L.S. 5767 (2) as shown on 2005 O.S. 090.

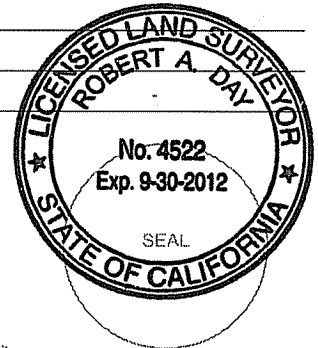
A description of the physical condition of the monument as found and as set or reset: \_\_\_\_\_

Set one at most northerly corner and Set one at most easterly corner (2 corners), See Exhibit "A".

### SURVEYOR'S STATEMENT

This Corner Record was prepared by me or under my direction in conformance with the Land Surveyor's Act on JANUARY 17, 2012.

Signed [Signature] P.L.S. or R.C.E. No.: L.S. 4522



### COUNTY SURVEYOR'S STATEMENT

This Corner Record was received DECEMBER 15, 2011 and examined and filed JANUARY 24, 2012.

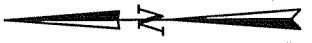
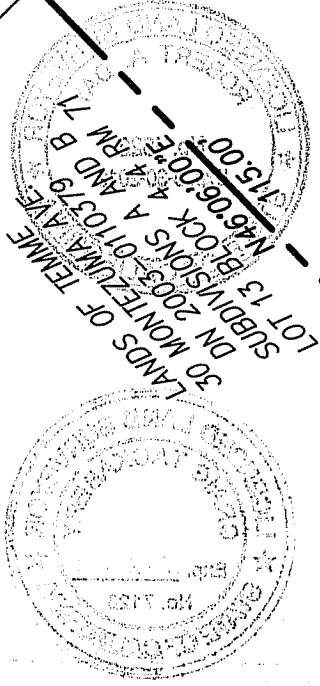
Signed [Signature] P.L.S. or R.C.E. No.: 7128

Title COUNTY SURVEYOR  
 County Surveyor's Comment \_\_\_\_\_

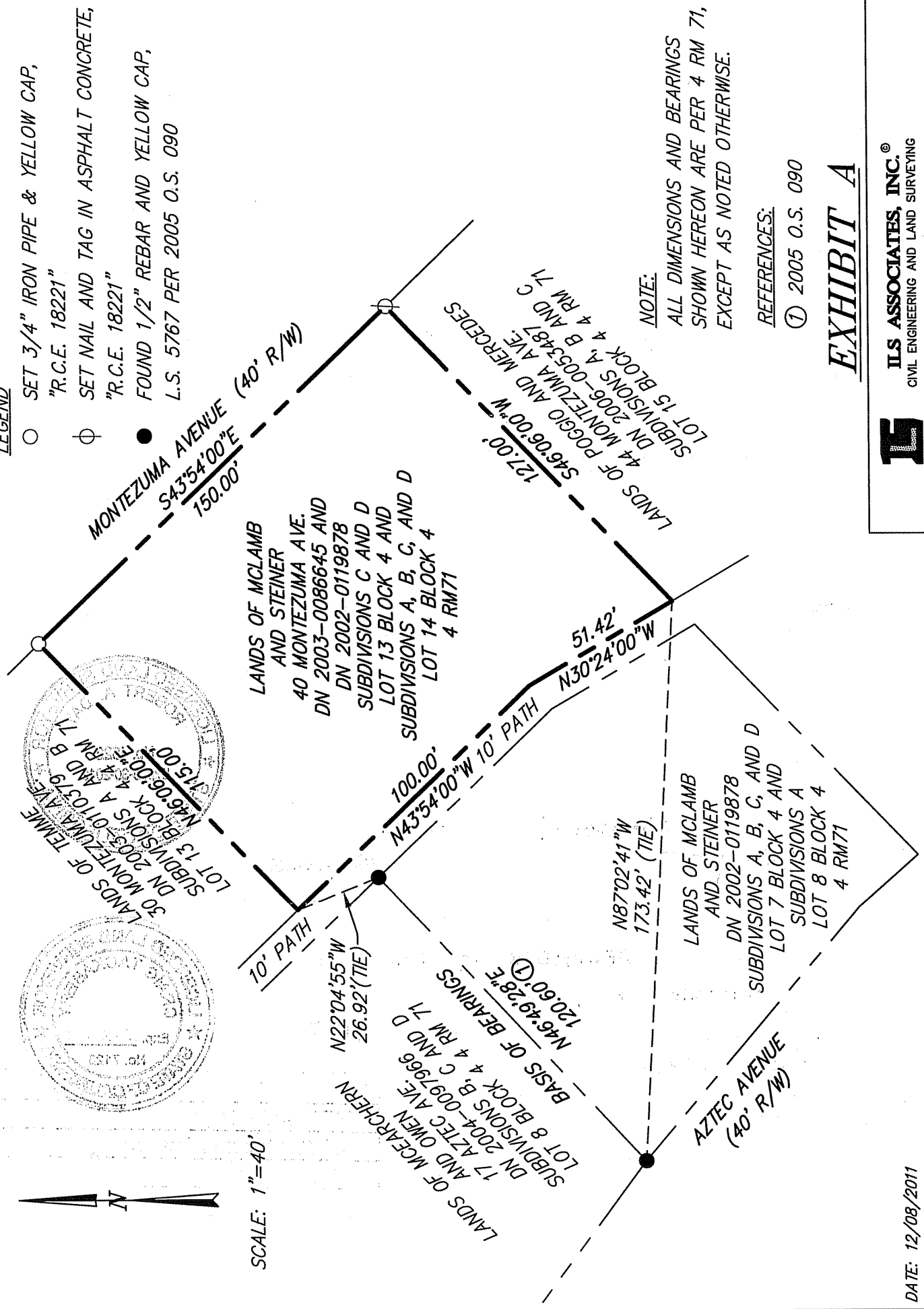


**LEGEND**

- SET 3/4" IRON PIPE & YELLOW CAP,  
"R.C.E. 18221"
- ⊕ SET NAIL AND TAG IN ASPHALT CONCRETE,  
"R.C.E. 18221"
- FOUND 1/2" REBAR AND YELLOW CAP,  
L.S. 5767 PER 2005 O.S. 090



SCALE: 1"=40'



**NOTE:**

ALL DIMENSIONS AND BEARINGS SHOWN HEREON ARE PER 4 RM 71, EXCEPT AS NOTED OTHERWISE.

**REFERENCES:**

- ① 2005 O.S. 090

**EXHIBIT A**



**ILS ASSOCIATES, INC.®**  
CIVIL ENGINEERING AND LAND SURVEYING

79 GALLI DRIVE, SUITE A NOVATO, CA 94949-5717 (415)863-9200 FAX (415)863-2763

A.P.N. 169-141-07

DATE: 12/08/2011  
FILE: 8624CR.dwg  
PAGE 2 OF 2