

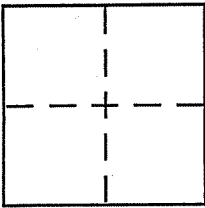
CORNER RECORD

Document Number 169-023-05

City of Forest Knolls

County of Marin, California

Brief Legal Description Montezuma Avenue, SFD -> Juarez



CORNER TYPE

Government Corner Control
Meander Property
Rancho Other
Date of Survey 12-08-2008

COORDINATES (Optional)

N. _____
E. _____
Zone _____ NAD27 NAD83
NAD83 Epoch _____
Elev. _____
Vert. Datum: NGVD29 NAVD88
Meas. Units: Metric Imperial

Corner - Left as found Found and tagged Established Reestablished Rebuilt

Identification and type of corner found: Evidence used to identify or procedure used to establish or reestablish the corner:

2 PK' NNLS & TAGS Shown on 26 05 17

Replaced with Standard County Monument/Disc

A description of the physical condition of the monument as found and as set or reset:

See back - Marked as A and B

SURVEYOR'S STATEMENT

This Corner Record was prepared by me or under my direction in conformance with the Land Surveyor's Act on 2-5-09

Signed Michael Li Brogan P.L.S. or R.C.E. No. LS 5767
Chief of Surveys - DPW Marin County



COUNTY SURVEYOR'S STATEMENT

This Corner Record was received FEBRUARY 5, 2009

and examined and filed MARCH 3, 2009

Signed [Signature] P.L.S. or R.C.E. No. 7128

Title COUNTY SURVEYOR

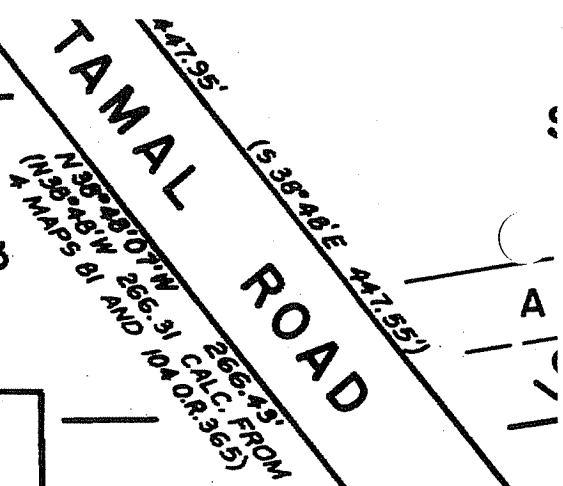


County Surveyor's Comment _____



260517

2184 O.R. 343



2798 O.R. 116
(67.44')

2184 O.R. 343
(100')

S.N. 82-35958
(75)

3692
O.R.
432
(75)

S.N. 86-63074
(82.56')

N 88°57'58\"E (N89°09'E) 520.00' HELD

SIR FRANCIS DRAKE BOULEVARD

MON TO MON: S 89°56'01\"E 516.40'

333.72'

SEE SHT. I

SEE NOTE A BELOW

N 89°10'38\"E 205.93'
(300')

S.N. 82-41067
FORMER

PK & SHINER
R.E. 11181
NOW PAVED OVER

N 89°10'38\"E 118.35'
(175')

S.N. 82-11190
RAILROAD R/W

N 0°50'W
59.86'

N 89°10'E

75.00'

55.00'

CASTRO STREET

N 89°10'E

50.00'

75.43'

295.40'

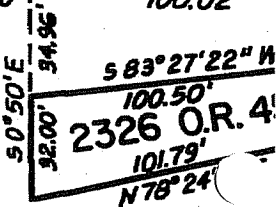
S 0°50'E 397.98'
159.97'

MONTEZUMA AVENUE

30'

101.98'

SET 3/4\"I.P.
AND CO. TAG



MAP I OF FOREST KNOLLS

3

2

99.98'

BLOCK I 4 MAPS 71

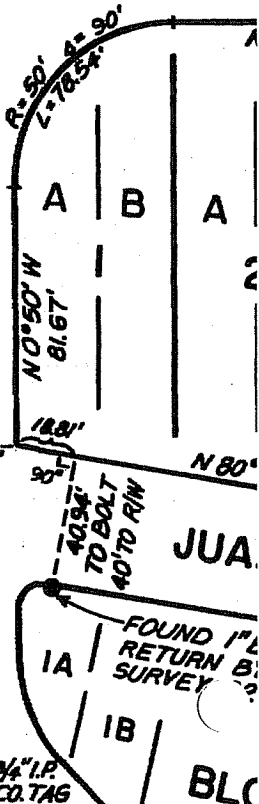
20

21

N 0°50'W
99.98'

22

A=90° R=100'



FOUND 1\"/>

← 423.78' TO MON.

S 89°10'W

130.00'

MORELOS AVE.