

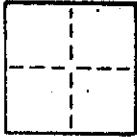
A.P. #169-021-47

### CORNER RECORD

COUNTY OF MARIN T. \_\_\_\_\_ R. \_\_\_\_\_ MERIDIAN \_\_\_\_\_ CALIFORNIA

CORNER TYPE: GOVT. CORNER  MEANDER  RANCHO  CONTROL  OTHER

CORNER IDENTIFICATION — DATE OF VISIT \_\_\_\_\_ 19\_\_\_\_



CORNER — LEFT AS FOUND  FOUND AND TAGGED  REESTABLISHED OBLITERATED CORNER  REBUILT

PHYSICAL DESCRIPTION OF CORNER FOUND; EVIDENCE AND METHOD USED TO IDENTIFY OR REESTABLISH

*SEE SKETCH BELOW*

PHYSICAL DESCRIPTION OF MONUMENTS REBUILT OR PERPETUATED

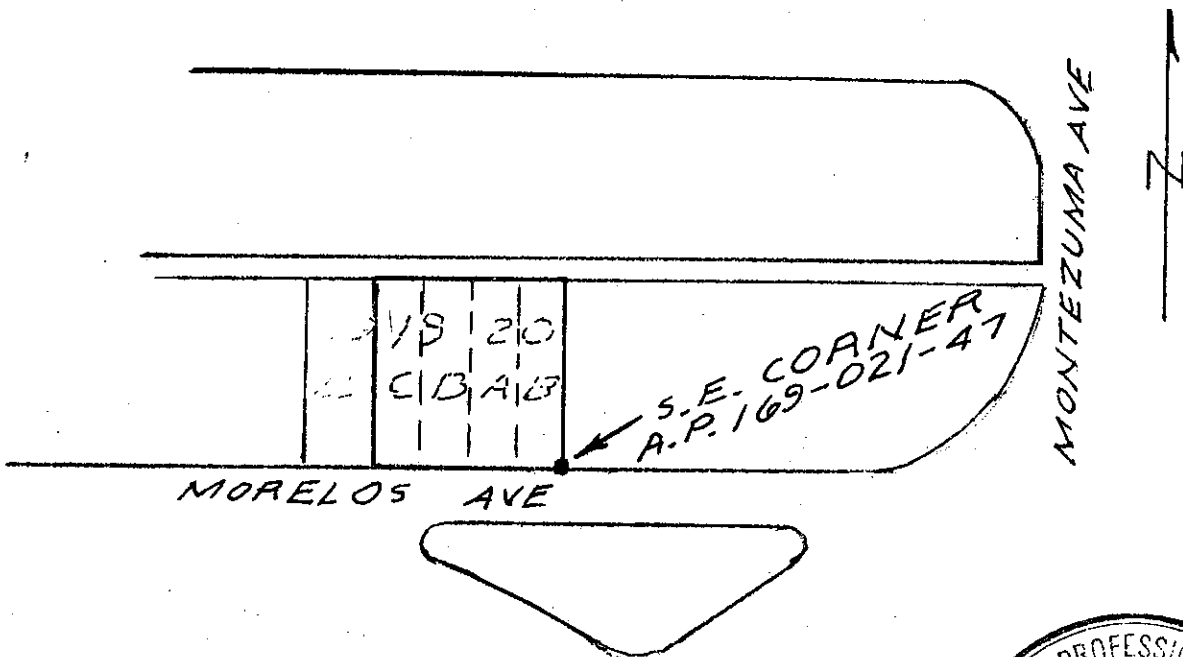
*SET HUB & L.S. 2771 TAG AT S.E. CORNER OF LOT 20B, BLOCK 1, MAP NO. 1 OF FOREST KNOLLS, A.R.M. 71*

CALIFORNIA COORDINATE SYSTEM ORDER: FIRST  SECOND  THIRD

STATIONS USED: NGS (USC & GS)  STATE  COUNTY  OTHER  STATION \_\_\_\_\_ STATION \_\_\_\_\_

ZONE \_\_\_\_\_ ELEVATION \_\_\_\_\_ NORTHINGS (Y) \_\_\_\_\_ EASTINGS (X) \_\_\_\_\_

SKETCH: (Include reference tie or witness points, remarks and topo of area)



**SURVEYOR'S CERTIFICATE**

THIS CORNER RECORD WAS PREPARED BY ME OR UNDER MY DIRECTION IN CONFORMANCE WITH THE LAND SURVEYORS ACT ON APRIL 23 19 90

SIGNED: Paul B. Neese

L.S. or R.C.E. No.: L.S. 2771

SEAL

**COUNTY SURVEYOR'S CERTIFICATE**

THE CORNER RECORD WAS RECEIVED AND EXAMINED AND FILED: APR 30 19 90

BY: Ken...

TITLE: Deputy Rural Commissioner

DOCUMENT No. \_\_\_\_\_

STATEMENT ON BACK OF SHEET YES  NO

EXPIRES 9/30/93