

CORNER RECORD

Assessor's Parcel No. 168-320-22

San Geronimo County of Marin California  
Brief Legal Description: RDN 2014-00357, Marin County Records

CORNER TYPE

COORDINATES  
(Optional)

Lot Corner per a Lot Line Adjustment. This lot line adjustment is shown on 2006 Maps 292.

None

Corners - None Found. Set corner based on the legal description and the monuments shown on 1998 Maps 90. Set one iron pipe monument as shown on this Corner Record.

Description of Monuments reset: Monument set is a 3/4 inch iron pipe and tag LS 4397.

SURVEYOR'S STATEMENT

This Corner Record was prepared by me or under my direction in conformance with the Land Surveyor's Act on October 8, 2013.



Signed Dale White LS 4397

COUNTY SURVEYOR'S STATEMENT

This Corner Record was received January 23, 2014, and examined and filed MAR. 08 31, 20 14.



Signed Richard G. Simonitch Title DEPUTY

County Surveyor's Comments \_\_\_\_\_  
\_\_\_\_\_  
\_\_\_\_\_

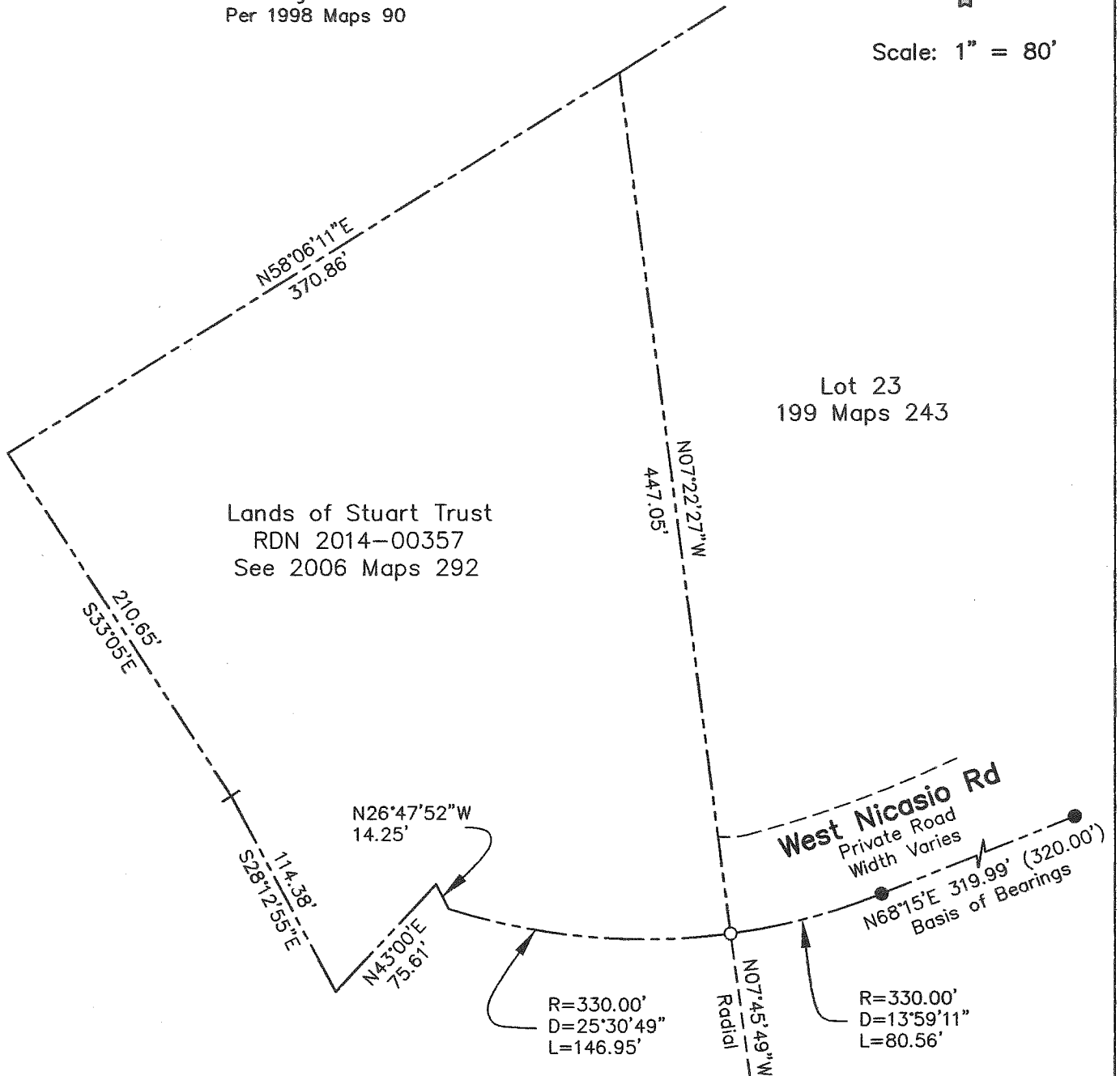
Corner Record

**Legend**

- Property Line
- Set 3/4" Iron Pipe  
And Tag LS 4397
- Fnd. 3/4" Iron Pipe  
And Tag LS 3971  
Per 1998 Maps 90



Scale: 1" = 80'



98 West Nicasio Road  
San Geronimo, CA  
APN 168-320-22

**Corner Record**

Property Survey  
RDN 2014-00357  
Marin County Records