

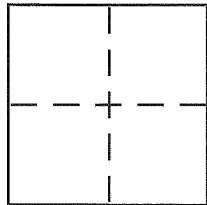
CORNER RECORD

Document Number 168-192-28

City of LAGUNITAS

County of MARIN, California

Brief Legal Description PORTION OF PARCEL 2, 12 PM 74



CORNER TYPE

Government Corner Control
Meander Property
Rancho Other
Date of Survey 3/17/15

COORDINATES (Optional)

N. _____
E. _____
Zone _____ NAD27 NAD83
NAD83 Epoch _____
Elev. _____
Vert. Datum: NGVD29 NAVD88
Meas. Units: Metric Imperial

Corner - Left as found Found and tagged Established Reestablished Rebuilt

Identification and type of corner found; Evidence used to identify or procedure used to establish or reestablish the corner:
FOUND ORIGINAL NAIL & TAGS & HUD & TAGS PER 12 PM 74. HELD RECORD ANGLES & DISTANCES FROM BEST RECORD-FITTING MONUMENTS. SEE PAGE 2.

A description of the physical condition of the monument as found and as set or reset: ALL MONUMENTS FOUND IN DECENT CONDITION. SET 1/2" IRON PIPES & YELLOW PLASTIC PLUGS, STAMPED "LS 6368". SEE SHEET 2.

SURVEYOR'S STATEMENT

This Corner Record was prepared by me or under my direction in conformance with the Land Surveyor's Act on 4/02/15

Signed Dean J. Barberio P.L.S or R.C.E. No. 8659



COUNTY SURVEYOR'S STATEMENT

This Corner Record was received APRIL 20, 2015

and examined and filed APRIL 21, 2015

Signed Richard G. Simonitch P.L.S or R.C.E. No. 7821

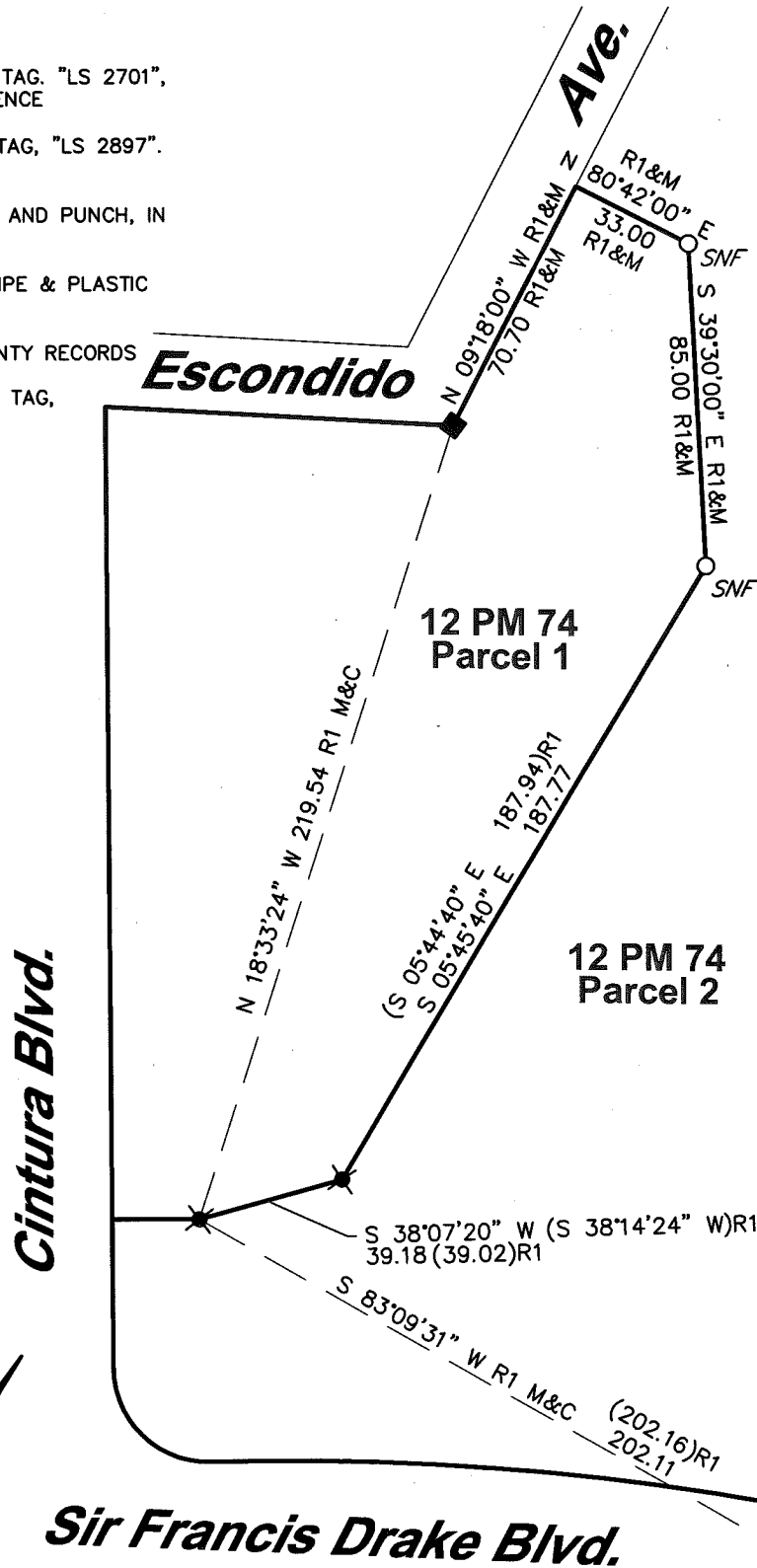
Title DEPUTY



County Surveyor's Comment _____

LEGEND

- ★ FOUND BRASS NAIL & TAG, "LS 2701", PER R1, ON TOP OF FENCE
- FOUND 2 X 2 HUB & TAG, "LS 2897". PER R1
- ⊙ FOUND 2" BRASS DISC AND PUNCH, IN MONUMENT WELL
- SET 1/2" INCH IRON PIPE & PLASTIC PLUG, "PLS 6368"
- R1 12 PM 74, MARIN COUNTY RECORDS
- SNF SEARCHED FOR HUB & TAG, PER R1, NOT FOUND
- C CALCULATED
- M MEASURED



NORTH
 SCALE: 1" = 50'

STEVEN J. LAFRANCHI & ASSOCIATES, INC.
 CIVIL ENGINEERS ~ LAND SURVEYORS ~ LAND PLANNERS

PETALUMA THEATRE SQUARE
 140 SECOND STREET, SUITE 312
 PETALUMA, CALIFORNIA 94952
 707-762-3122 FAX 707-762-3239