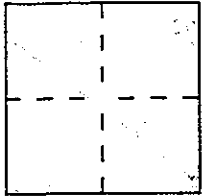


CORNER RECORD

Document Number A.P. 168-181-06

City of _____ County of MARIN, California

Brief Legal Description LOTS 108-109, LAG. TRACT SUB 4, 2 R.M. 95



CORNER TYPE

Government Corner Control
Meander Property
Rancho Other
Date of Survey _____

COORDINATES (Optional)

N. _____
E. _____
Zone _____ Datum _____
Elev. _____

Corner → Left as found Found and tagged Established Reestablished Rebuilt

Identification and type of corner found: Evidence used to identify or procedure used to establish or reestablish the corner:

CORNERS ESTABLISHED FROM FOUND CORNERS
23 P.M. 79, SEE REAR.

A description of the physical condition of the monument as found and as set or reset:

SEE ATTACHED SKETCH ON REAR

SURVEYOR'S STATEMENT

This Corner Record was prepared by me or under my direction in conformance with the Land Surveyors' Act on AUGUST 30 2002

Signed Paul B. Neese L.S. or R.C.E. Number L.S. 2771



COUNTY SURVEYOR'S STATEMENT

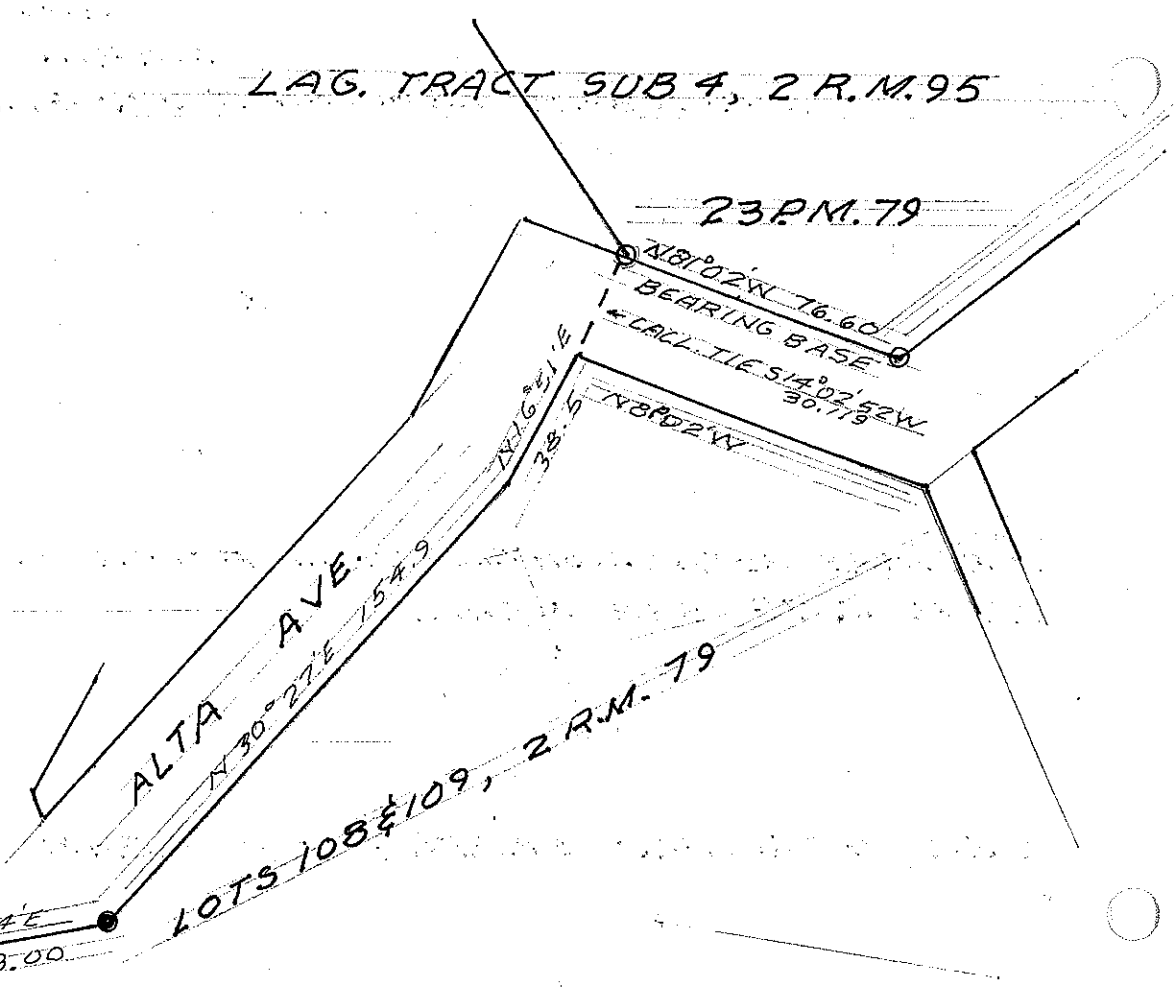
This Corner Record was received SEPTEMBER 6, 2002 and examined
and filed SEPTEMBER 9, 2002

Signed [Signature] Title DEPUTY



County Surveyor's Comment _____

LAG. TRACT SUB 4, 2 R.M. 95



N87°30'E

N67°54'E
58.00

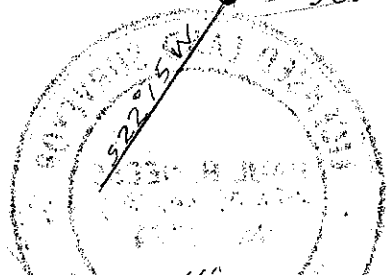
ALTA AVE.
N30°27'E 154.9

LOTS 108 & 109, 2 R.M. 79

23 P.M. 79

N81°02'N 76.60
BEARING BASE
CALL TIE S14°07'52"W
30.79

YK 16 3/4\"/>



• SET 1/2 REBAR WITH PLASTIC CAP L.S. 2771

○ FOUND 3/4 T.P., R.C.E. 18221 TAG

SCALE 1" = 50'

