

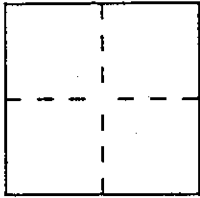
CORNER RECORD

City of LAGUNITAS

Document Number A.P. # 168-175-5,6

County of MARIN, California

Brief Legal Description PARCEL "A" & "B", 30 D.S. 63, A.P. 168-175-05 & 06



CORNER TYPE

Government Corner Control
Meander Property
Rancho Other
Date of Survey OCT 1997

COORDINATES (Optional)

N. _____
E. _____
Zone _____ Datum _____
Elev. _____

Corner Left as found Found and tagged Established Reestablished Rebuilt

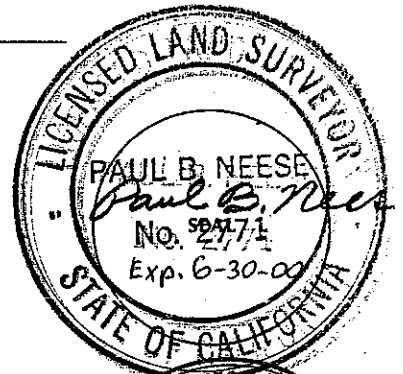
Identification and type of corner found: Evidence used to identify or procedure used to establish or reestablish the corner:
CORNER AND LINE POINT ESTABLISHED FROM COUNTY ROAD MONUMENTS ON SIR FRANCIS DRAKE BLVD. IN LAGUNITAS.

A description of the physical condition of the monument as found and as set or reset:
CORNER - NAIL & L.S. 2771 TAG SET IN BLACK TOP, LINE POINT - 1/2" RE BAR WITH L.S. 2771 PLASTIC CAP.

SURVEYOR'S STATEMENT

This Corner Record was prepared by me or under my direction in conformance with the Land Surveyors' Act on OCTOBER 15 1997

Signed Paul B. Neese L.S. or R.C.E. Number L.S. 2771



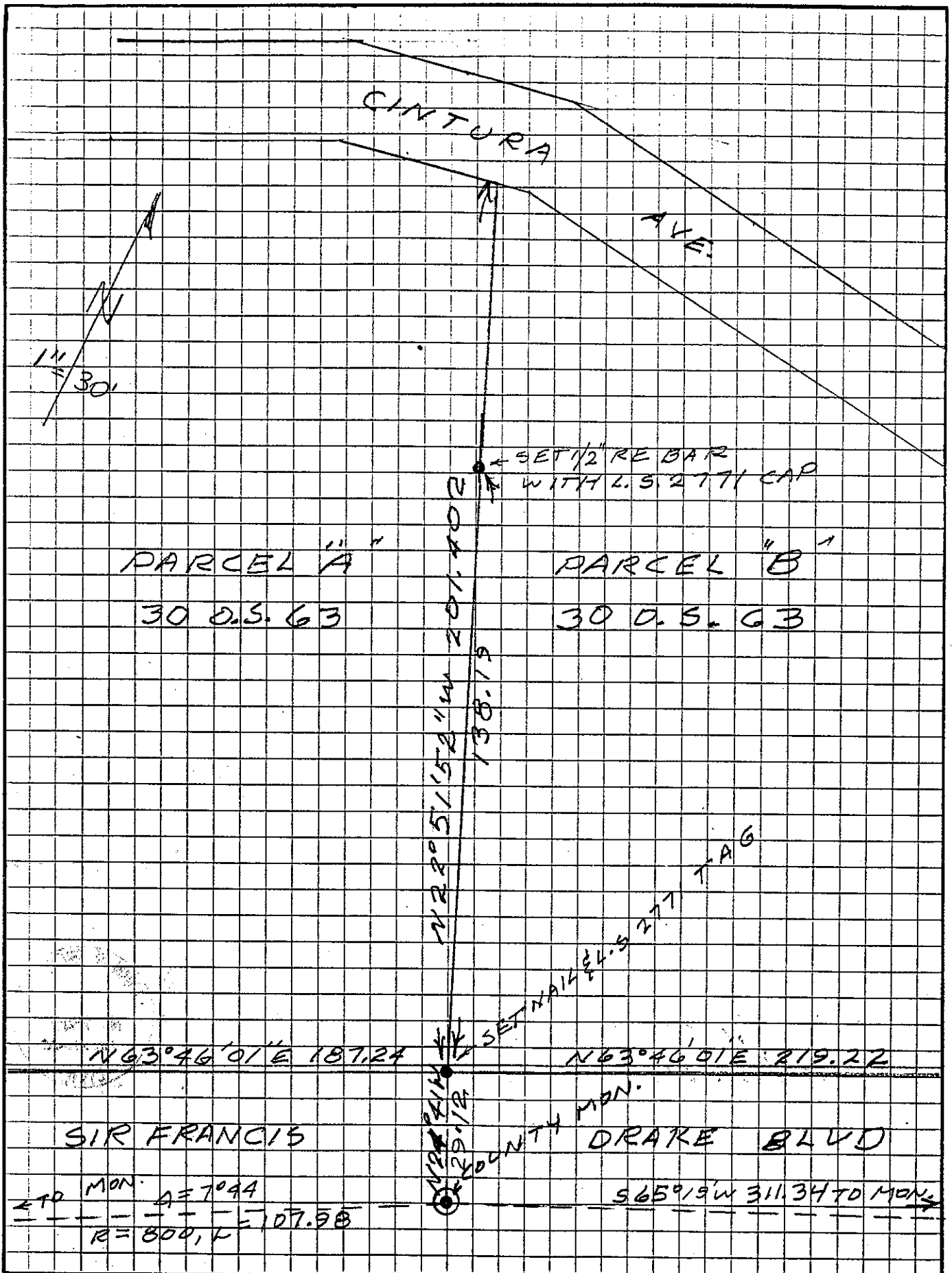
COUNTY SURVEYOR'S STATEMENT

This Corner Record was received OCTOBER 20 1997 and examined and filed OCTOBER 1997.

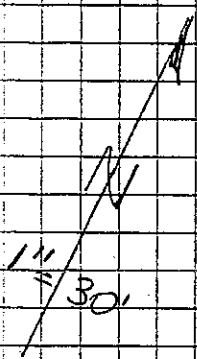
Signed John M. Wooley Title DEPUTY



County Surveyor's Comment _____



CINTURA AVE.



← SET 1/2" RE BAR WITH L.S. 2771 CAP

PARCEL "A"
30 D.S. 63

PARCEL "B"
30 D.S. 63

N 22° 05' 15" E 201.40 E
138.15

SET NA 1/2" L.S. 2771 TAG

N 63° 46' 01" E 187.24

N 63° 46' 01" E 219.22

SIR FRANCIS

DRAKE BLVD

TO MON. A=7094
R=800, L=107.58

S 65° 19' W 311.34 TO MON.