

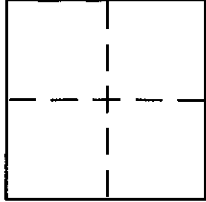
CORNER RECORD

Document Number A.P. # 166-330-11

City of UNINCORPORATED

County of MARIN, California

Brief Legal Description BEING THE LINE SHOWN AS N 62° 22' 34" W 145.34' C ON 2001 M 20, SHEET 5 OF B.M.C.R., THE EASTERLY TERMINUS OF WHICH LIES S 36° 59' 11" W 115.01', THENCE S 18° 06' 39" W 50.46' FROM A FOUND 1/2" IRON PIPE PLS 6702 AT THE NORTHWEST CORNER OF LANDS OF FOX.



CORNER TYPE

COORDINATES (Optional)

Government Corner Control
Meander Property
Rancho Other
Date of Survey 6-13-02

N. _____
E. _____
Zone _____ NAD27 NAD83
NAD83 Epoch _____
Elev. _____
Vert. Datum: NGVD29 NAVD88
Meas. Units: Metric Imperial

Corner - Left as found Found and tagged Established Reestablished Rebuilt

Identification and type of corner found: Evidence used to identify or procedure used to establish or reestablish the corner:

THE POSITION OF THESE CORNERS WAS CALCULATED AND ESTABLISHED PER THE BOUNDARY SURVEY OF ADJOINING LANDS OF KOJAN, A SURVEY PREPARED BY PACIFIC LAND SURVEYS, RECORDED IN 2001 MAPS 20, M.C.R.

A description of the physical condition of the monument as found and as set or reset: SET TWO 1/2" IRON PIPES TAGGED PLS 6702, IRON PIPES 30" LONG.

SURVEYOR'S STATEMENT

This Corner Record was prepared by me or under my direction in conformance with

the Land Surveyor's Act on September 12, 2002

Signed Susan D. Ruschmeyer P.L.S. or R.C.E. No. PLS 6702



COUNTY SURVEYOR'S STATEMENT

This Corner Record was received SEPTEMBER 13, 2002

and examined and filed SEPTEMBER 17, 2002

Signed [Signature] P.L.S. or R.C.E. No. 7128

Title DEPUTY



County Surveyor's Comment _____

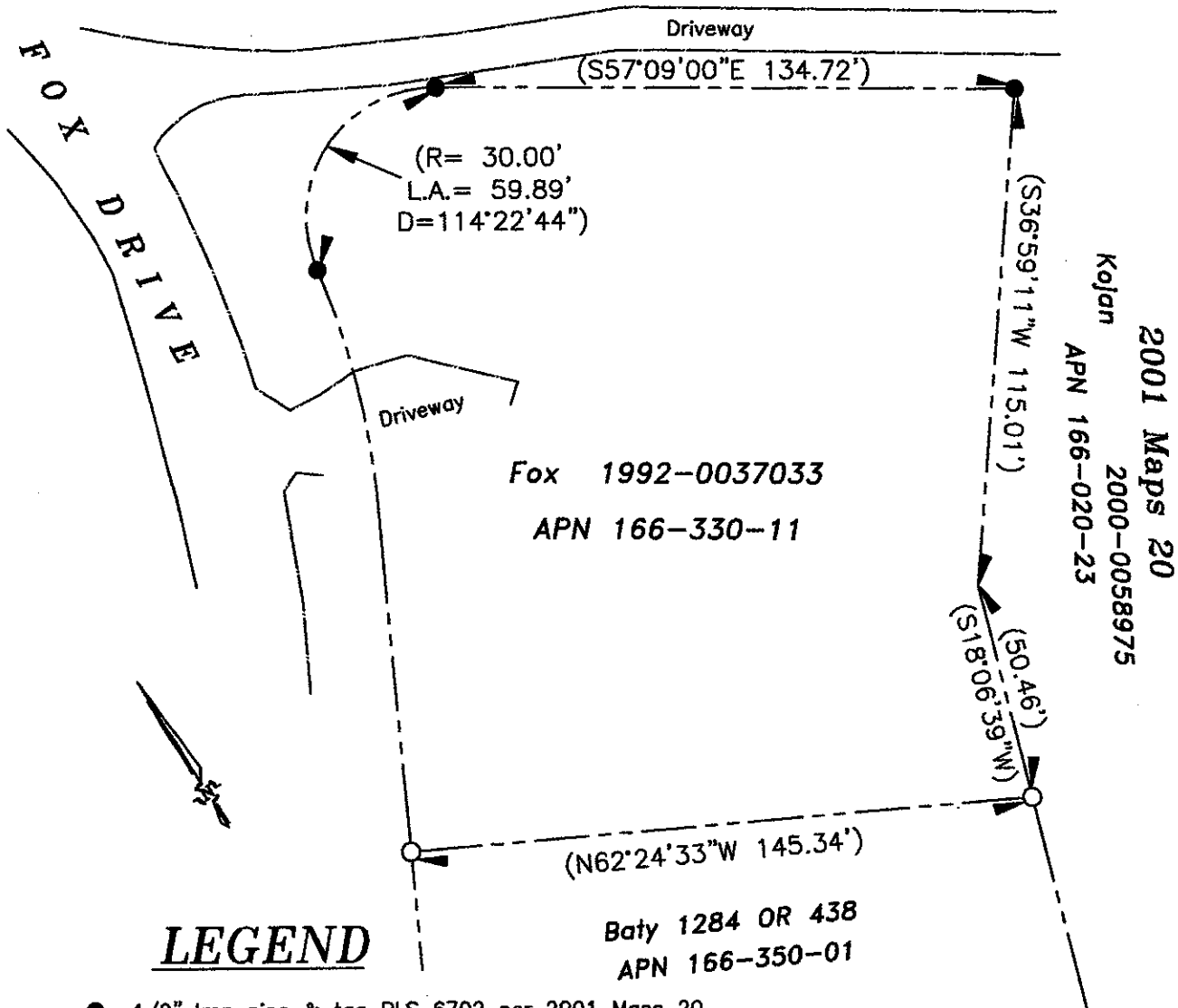
NOTES

2001 Maps 20

Kojan 2000-0058975

APN 166-020-23

1. Distances and dimensions are in feet and decimals thereof.



LEGEND

● 1/2" Iron pipe & tag PLS 6702 per 2001 Maps 20

○ Set 1/2" iron pipe & tag PLS 6702 6/13/02

(S57°09'00"E 134.72') Record data per 2001 Maps 20

----- Boundary of subject property

----- Boundary of other lands

----- Edge of pavement



SCALE: 1"=40'
GRAPHIC SCALE IN FEET