

CORNER RECORD

Assessor's Parcel No. 166-220-10

County of Marin California

Brief Legal Description: 2760 OR 191, Marin County Records

CORNER TYPE

**COORDINATES
(Optional)**

Parcel shown on a Record of Survey map

None

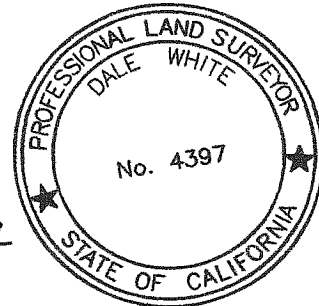
Corners - None found. Calculated property boundary based on the Record of Survey filed in 2008 Maps 62, Marin County Records.

Set, found or referenced three property corner monuments as shown on this Corner Record.

Description of Monuments reset: Monuments set are described on page 2.

SURVEYOR'S STATEMENT

This Corner Record was prepared by me or under my direction in conformance with the Land Surveyor's Act on July 24, 2014.



Signed Dale White LS 4397 9-25-14

COUNTY SURVEYOR'S STATEMENT

This Corner Record was received 07-28, 20 14, and examined and filed OCTOBER 15, 20 14.

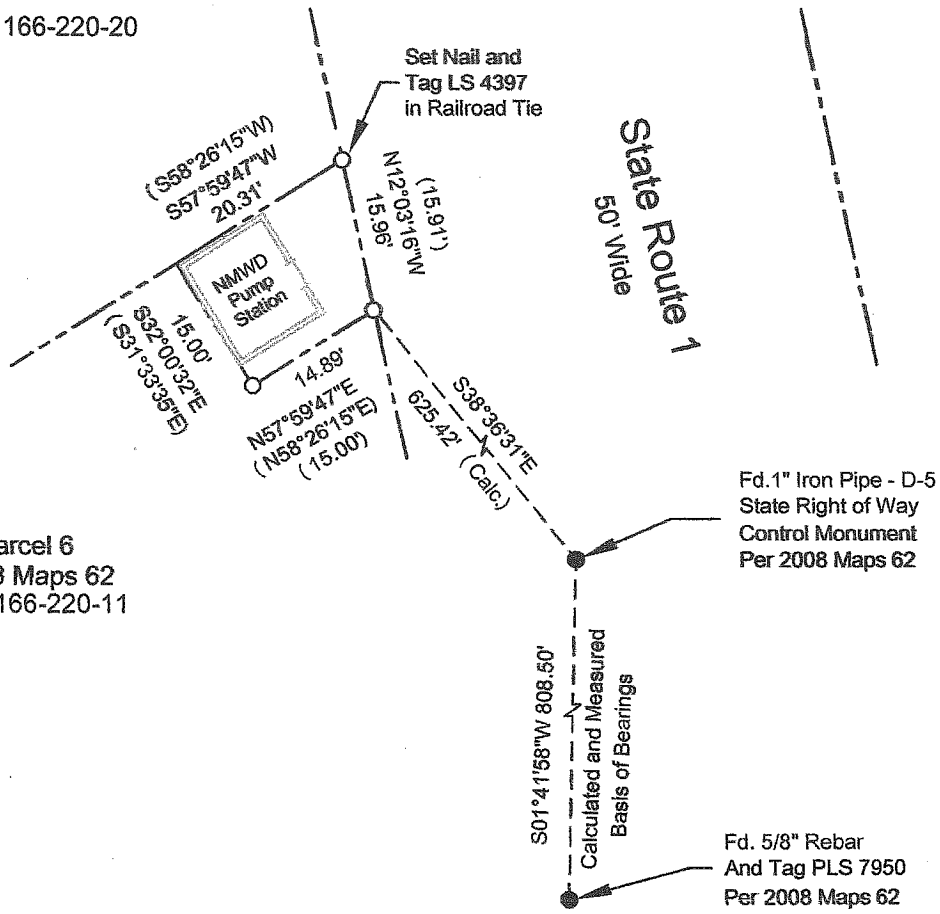
Signed Richard G. Simonitch Title DEPUTY







County Surveyor's Comments _____

APN 166-220-20

Parcel 6
2008 Maps 62
APN 166-220-11



Legend

-  Property Line
-  Set 3/4" Iron Pipe
And Tag LS 4397
Unless Otherwise Noted
-  Found Monuments
as Noted
-  Record Dimensions
Per 2760 OR 191



Scale: 1" = 20'

APN 166-220-10

D:\LDT2014\NMWD Olerma Pump
Sta\dwg\corner record.dwg

Corner Record

North Marin Water District
Property Survey
2760 OR 191
Marin County Records