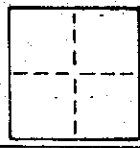


# CORNER RECORD A.P. 166-03

COUNTY OF MARIN T. \_\_\_\_\_ R. \_\_\_\_\_ MERIDIAN \_\_\_\_\_ CALIFORNIA

CORNER TYPE: GOVT. CORNER  MEANDER  RANCHO  CONTROL  OTHER  Road centerline shown on 8 PM 42

CORNER IDENTIFICATION - DATE OF VISIT 1 August 19 84



Sir Francis Drake Blvd. centerline BC and centerline EC at Platform Bridge Road

CORNER - LEFT AS FOUND  FOUND AND TAGGED  REESTABLISHED OBLITERATED CORNER  REBUILT

PHYSICAL DESCRIPTION OF CORNER FOUND; EVIDENCE AND METHOD USED TO IDENTIFY OR REESTABLISH

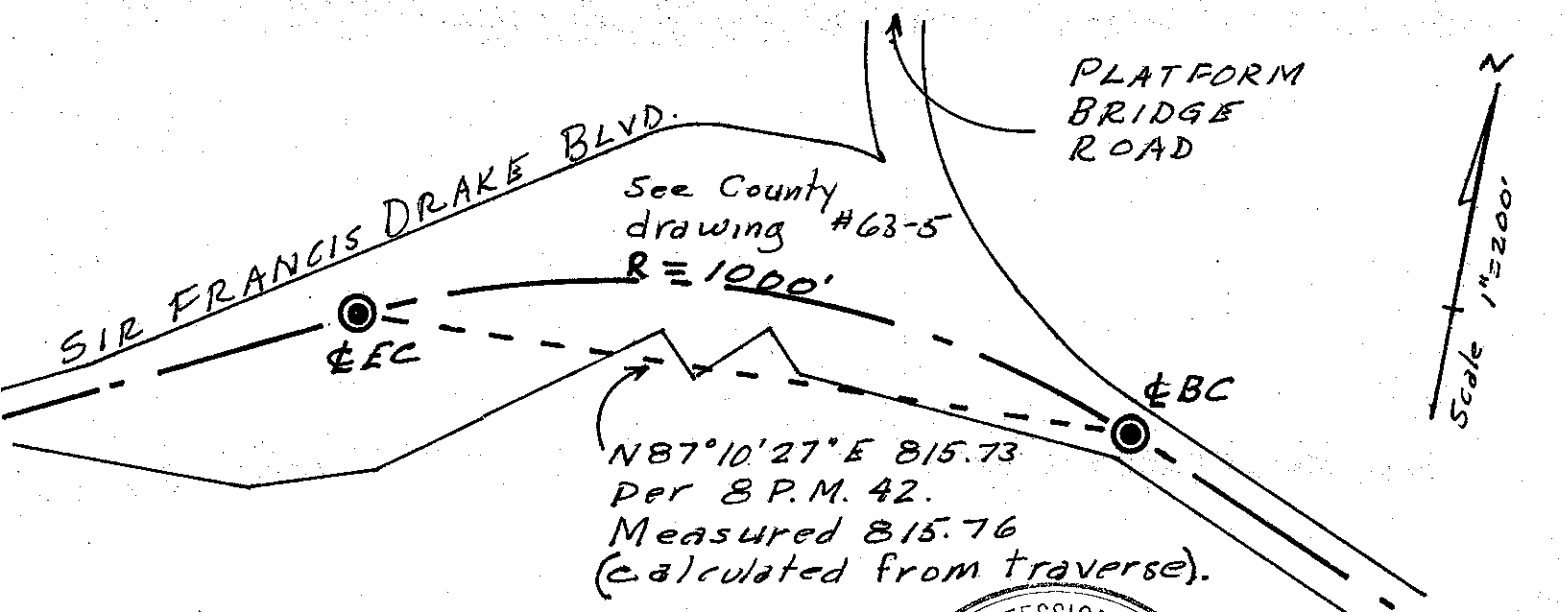
3/4" bolts on centerline existing paving at beginning of curve and end of curve. See 8 PM 42 sheet 6.

PHYSICAL DESCRIPTION OF MONUMENTS, REBUILT OR PERPETUATED

Bronze disks stamped "Marin County Public Works Department" set in concrete, with cast iron ring and cover. ("standard street monument")

CALIFORNIA COORDINATE SYSTEM ORDER: FIRST  SECOND  THIRD   
 STATIONS USED: NGS (USC & GS)  STATE  COUNTY  OTHER  STATION \_\_\_\_\_  
 ZONE \_\_\_\_\_ ELEVATION \_\_\_\_\_ NORTHINGS (Y) \_\_\_\_\_ EASTINGS (X) \_\_\_\_\_

SKETCH: (Include reference tie or witness points, remarks and topo of area)



● = Found 3/4" bolt; set standard monument.

**SURVEYOR'S CERTIFICATE**  
 THIS CORNER RECORD WAS PREPARED BY ME OR UNDER MY DIRECTION IN CONFORMANCE WITH THE LAND SURVEYORS ACT ON 31 October 19 84  
 SIGNED: Donald H Thomas  
 L.S. or R.C.E. No.: L5 3288

**REGISTERED PROFESSIONAL ENGINEER**  
**CHARLES J. MURPHY**  
 COUNTY SURVEYOR'S CERTIFICATE  
 THE CORNER RECORD WAS RECEIVED 11-1 19 84  
 AND EXAMINED AND FILED 11-5 19 84  
 BY: Charles J. Murphy  
 TITLE: Deputy County Surveyor  
 STATE OF CALIFORNIA  
 STATEMENT ON BACK OF SHEET