

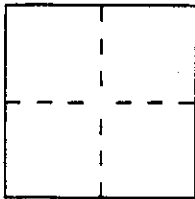
CORNER RECORD

Document Number 96-041799

City of San Rafael

County of Marin, California

Brief Legal Description Lot 4 "Map of Montevideo Terrace" 21 RM39



CORNER TYPE

Government Corner Control
 Meander Property
 Rancho Other
 Date of Survey July 1997

COORDINATES (Optional)

N. _____
 E. _____
 Zone _____ Datum _____
 Elev. _____

Corner — Left as found Found and tagged Established Reestablished Rebuilt

Identification and type of corner found: Evidence used to identify or procedure used to establish or reestablish the corner:

Found Std. well monuments per 21 RM39.
Used to locate existing openspace easement
per said map.

A description of the physical condition of the monument as found and as set or reset:

set monuments as shown on attached map

SURVEYOR'S STATEMENT

This Corner Record was prepared by me or under my direction in conformance with the Land Surveyors' Act on Aug 4 1997.

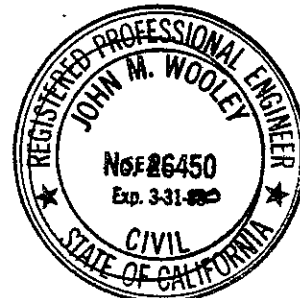
Signed Linda A. Carruthers L.S. or R.C.E. Number 7053



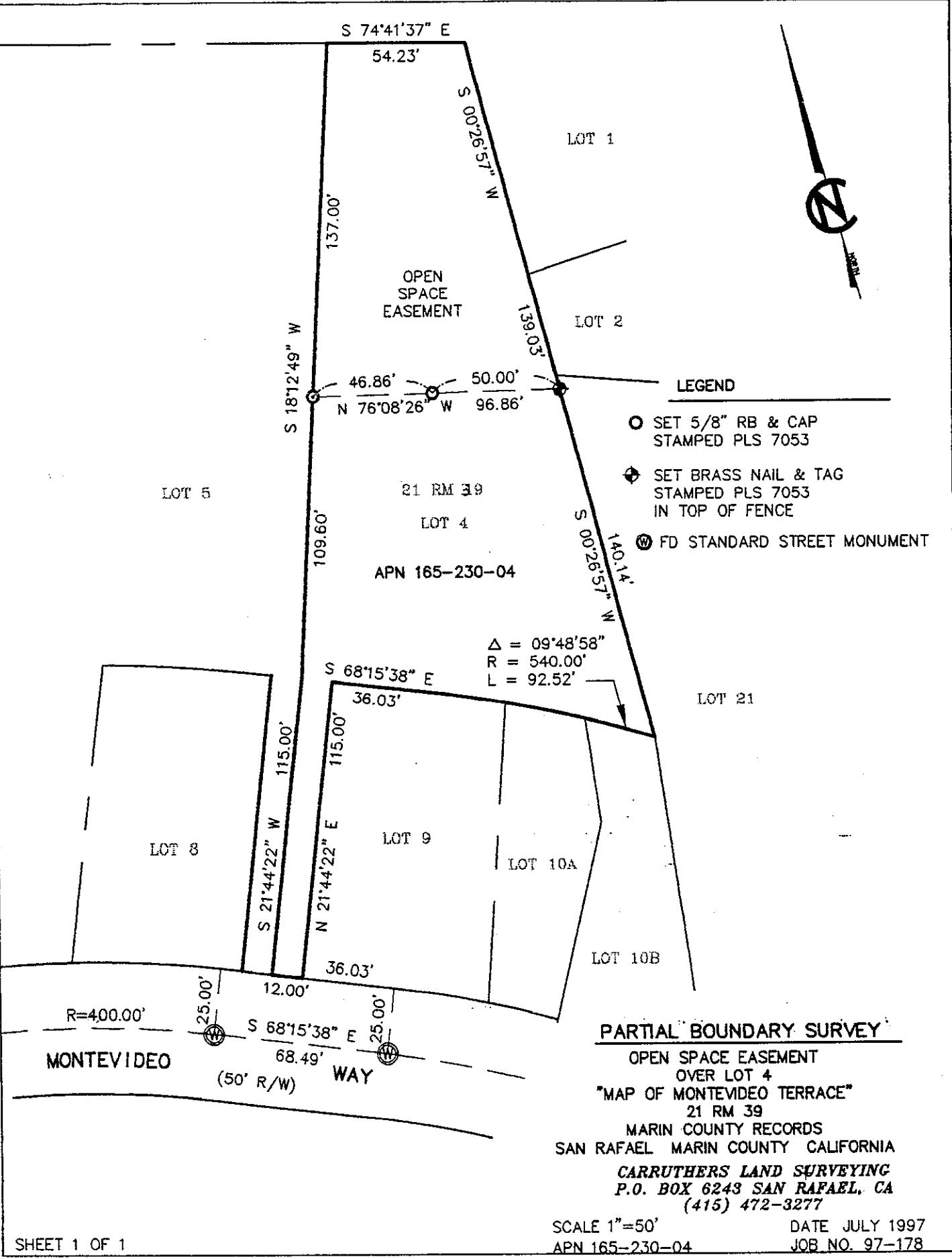
COUNTY SURVEYOR'S STATEMENT

This Corner Record was received AUGUST 12 1997 and examined and filed AUGUST 13 1997.

Signed John M. Wooley Title DEPUTY



County Surveyor's Comment _____



LEGEND

- SET 5/8" RB & CAP STAMPED PLS 7053
- ⊕ SET BRASS NAIL & TAG STAMPED PLS 7053 IN TOP OF FENCE
- ⊙ FD STANDARD STREET MONUMENT

Δ = 09°48'58"
 R = 540.00'
 L = 92.52'

PARTIAL BOUNDARY SURVEY

OPEN SPACE EASEMENT
 OVER LOT 4
 "MAP OF MONTEVIDEO TERRACE"
 21 RM 39
 MARIN COUNTY RECORDS
 SAN RAFAEL MARIN COUNTY CALIFORNIA
 CARRUTHERS LAND SURVEYING
 P.O. BOX 6243 SAN RAFAEL, CA
 (415) 472-3277

SCALE 1"=50' DATE JULY 1997
 APN 165-230-04 JOB NO. 97-178