



JERRICO ASSOCIATES

SUITE 27
77 MARK DRIVE
SAN RAFAEL, CA 94903

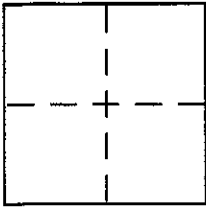
7461

CORNER RECORD

Document Number 165-201-16

City of San Rafael County of Marin, California

Brief Legal Description Lot 203 San Rafael Park Unit 4 13 R.M. 90



CORNER TYPE

Government Corner Control
 Meander Property
 Rancho Other
 Date of Survey April 25, 2002

COORDINATES (Optional)

N. _____
 E. _____
 Zone _____ NAD27 NAD83
 NAD83 Epoch _____
 Elev. _____
 Vert. Datum: NGVD29 NAVD88
 Meas. Units: Metric Imperial

Corner - Left as found Found and tagged Established Reestablished Rebuilt

Identification and type of corner found: Evidence used to identify or procedure used to establish or reestablish the corner:

Standard Subdivision Monuments

A description of the physical condition of the monument as found and as set or reset: _____

Set rebar and cap LS 3887 and set tag LS 3887 (see back).

SURVEYOR'S STATEMENT

This Corner Record was prepared by me or under my direction in conformance with the Land Surveyor's Act on April 25 2002

Signed [Signature] P.L.S or R.C.E. No. LS 3887

COUNTY SURVEYOR'S STATEMENT

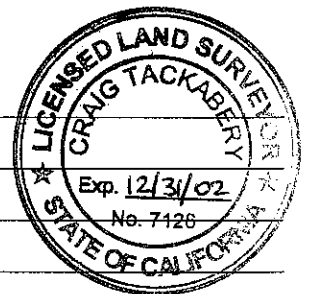
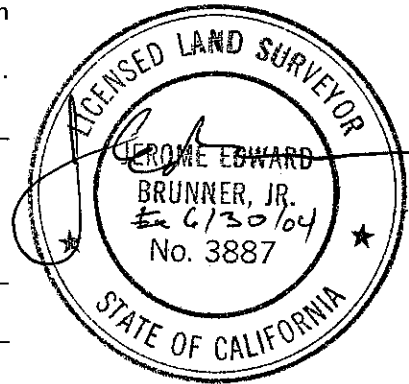
This Corner Record was received MAY 3, 2002

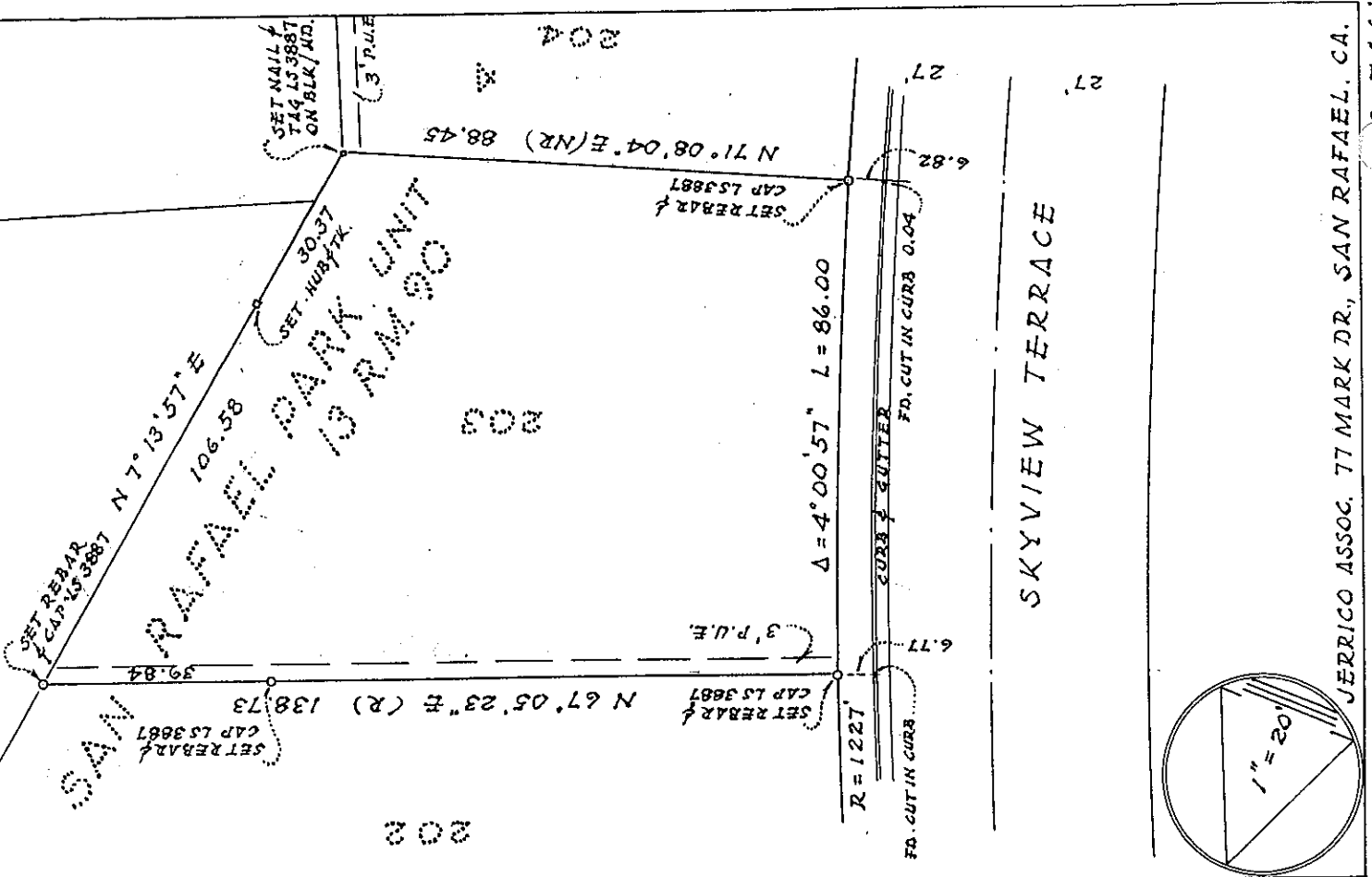
and examined and filed MAY 7, 2002

Signed [Signature] P.L.S or R.C.E. No. 7128

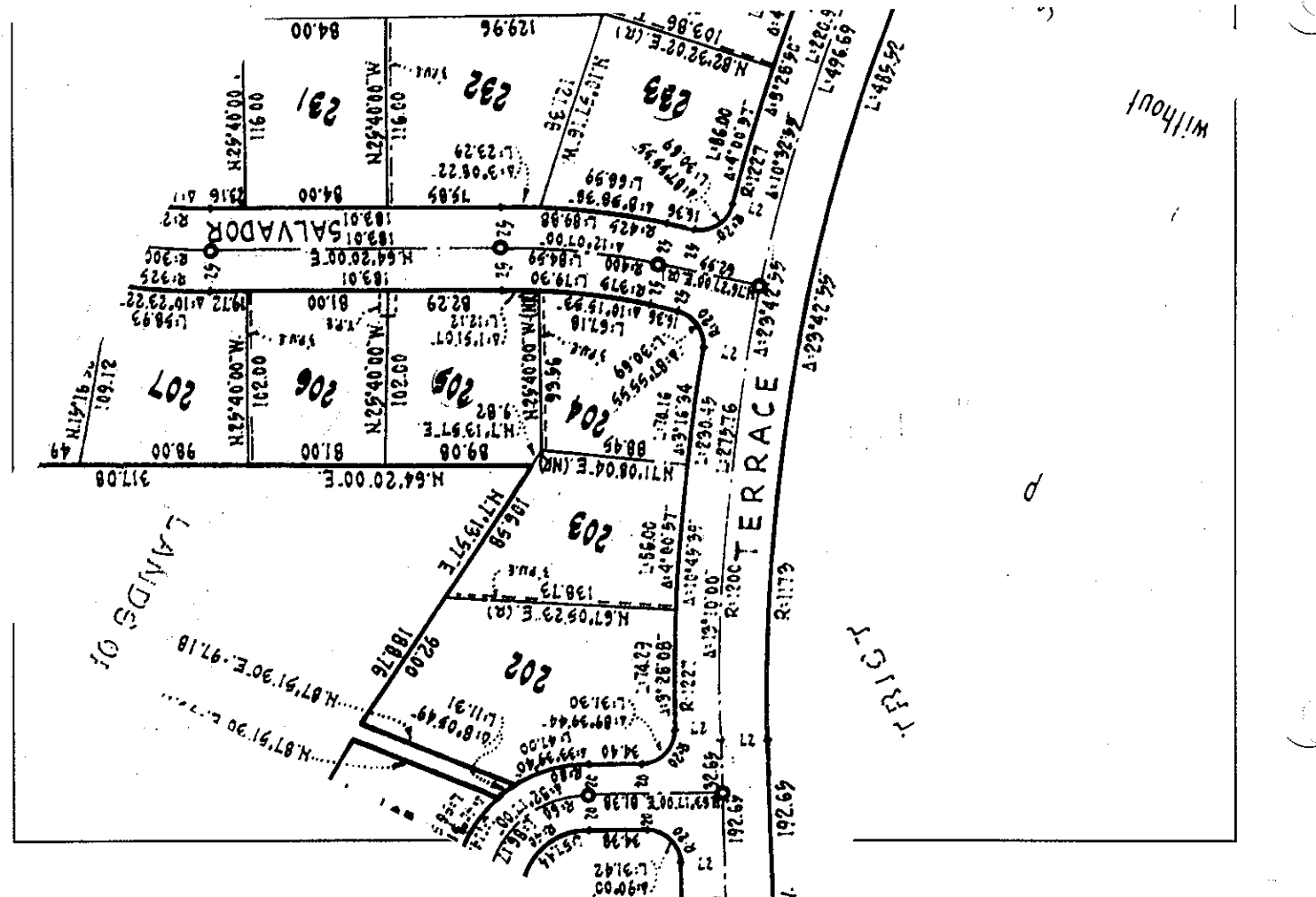
Title DEPUTY

County Surveyor's Comment _____





JERRICO ASSOC. 77 MARK DR., SAN RAFAEL, CA. S-7461



without