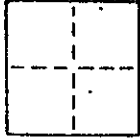


CORNER RECORD

COUNTY OF Marin T. _____ R. _____ MERIDIAN CALIFORNIA

CORNER TYPE: GOVT. CORNER MEANDER RANCHO CONTROL OTHER

CORNER IDENTIFICATION — DATE OF VISIT _____ 19____



CORNER — LEFT AS FOUND FOUND AND TAGGED REESTABLISHED OBLITERATED CORNER REBUILT

PHYSICAL DESCRIPTION OF CORNER FOUND; EVIDENCE AND METHOD USED TO IDENTIFY OR REESTABLISH

Set a 3/4" iron pipe with plastic plug embossed "LS 3773" at the most Easterly corner of Lot 14, "Map of Las Colindas Unit Ten" filed in book 13 of Maps at page 88, Marin County Records, by and per said Map.

PHYSICAL DESCRIPTION OF MONUMENTS REBUILT OR PERPETUATED

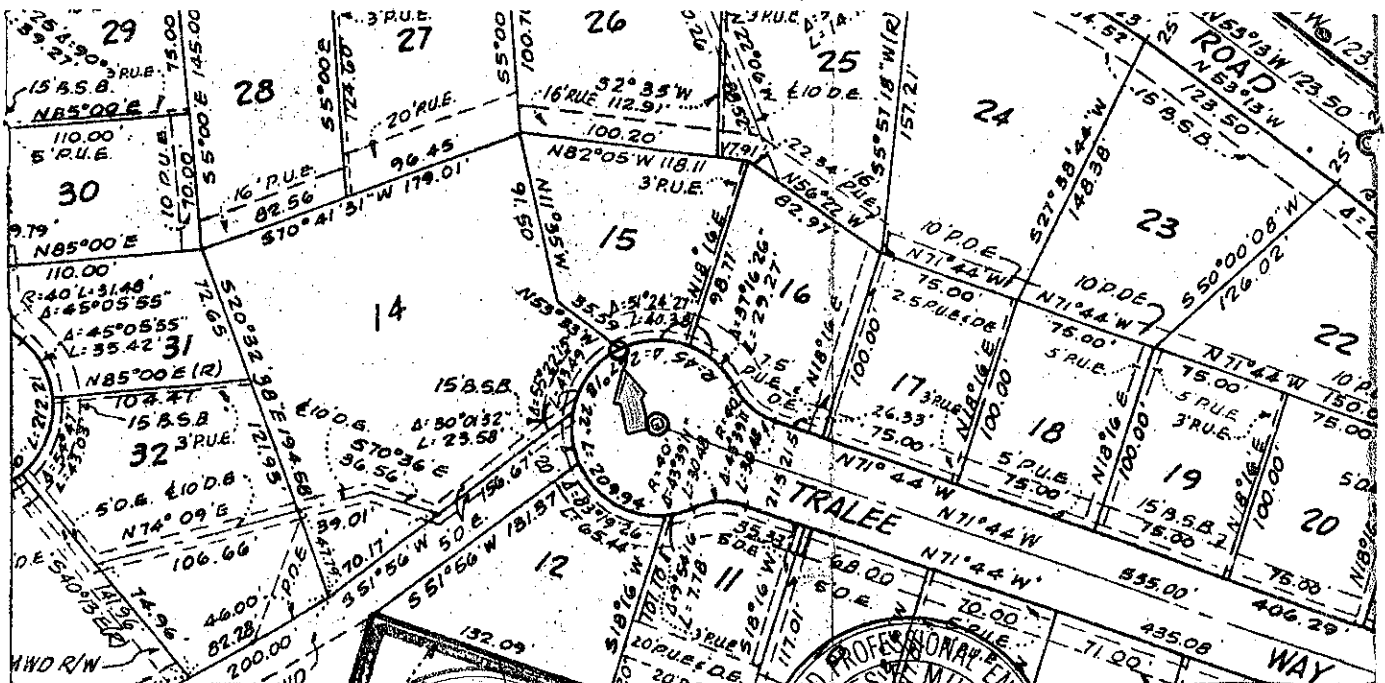
AS SHOWN

TREMOLADA J-1580

AP # 165-192-10

CALIFORNIA COORDINATE SYSTEM ORDER: FIRST SECOND THIRD
STATIONS USED: NGS (USC & GS) STATE COUNTY OTHER STATION _____ STATION _____
ZONE _____ ELEVATION _____ NORTHINGS (Y) _____ EASTINGS (X) _____

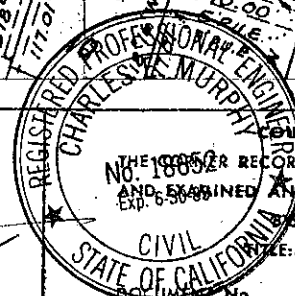
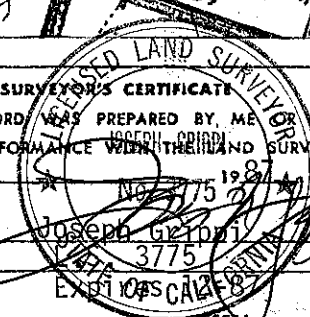
SKETCH: (Include reference tie or witness points, remarks and topo of area)



SURVEYOR'S CERTIFICATE

THIS CORNER RECORD WAS PREPARED BY ME OR UNDER MY DIRECTION IN CONFORMANCE WITH THE LAND SURVEYORS ACT ON 15 May 1987

SIGNED: Joseph Grimaldi
L.S. or R.C.E. No.: 3775



COUNTY SURVEYOR'S CERTIFICATE
THE CORNER RECORD WAS RECEIVED _____ 19____
AND EXAMINED AND FILED 7-20 1987
By: Charles W. Murphy
COUNTY SURVEYOR

STATEMENT ON BACK OF SHEET

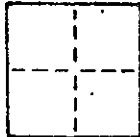
YES NO

CORNER RECORD

COUNTY OF Marin T. _____ R. _____ MERIDIAN CALIFORNIA

CORNER TYPE: GOV'T. CORNER MEANDER RANCHO CONTROL OTHER

CORNER IDENTIFICATION — DATE OF VISIT _____ 19____



CORNER — LEFT AS FOUND FOUND AND TAGGED REESTABLISHED OBLITERATED CORNER REBUILT

PHYSICAL DESCRIPTION OF CORNER FOUND; EVIDENCE AND METHOD USED TO IDENTIFY OR REESTABLISH

Set a 3/4" iron pipe with plastic plug embossed "LS 3775" at the Easterly Terminus of the course "S 51° 56' W 156.67'" of Lot 14, "Map of Las Colindas Unit Ten" filed in Book 13 of Maps at Page 88, Marin County Records, by and per said Map.

PHYSICAL DESCRIPTION OF MONUMENTS REBUILT OR PERPETUATED

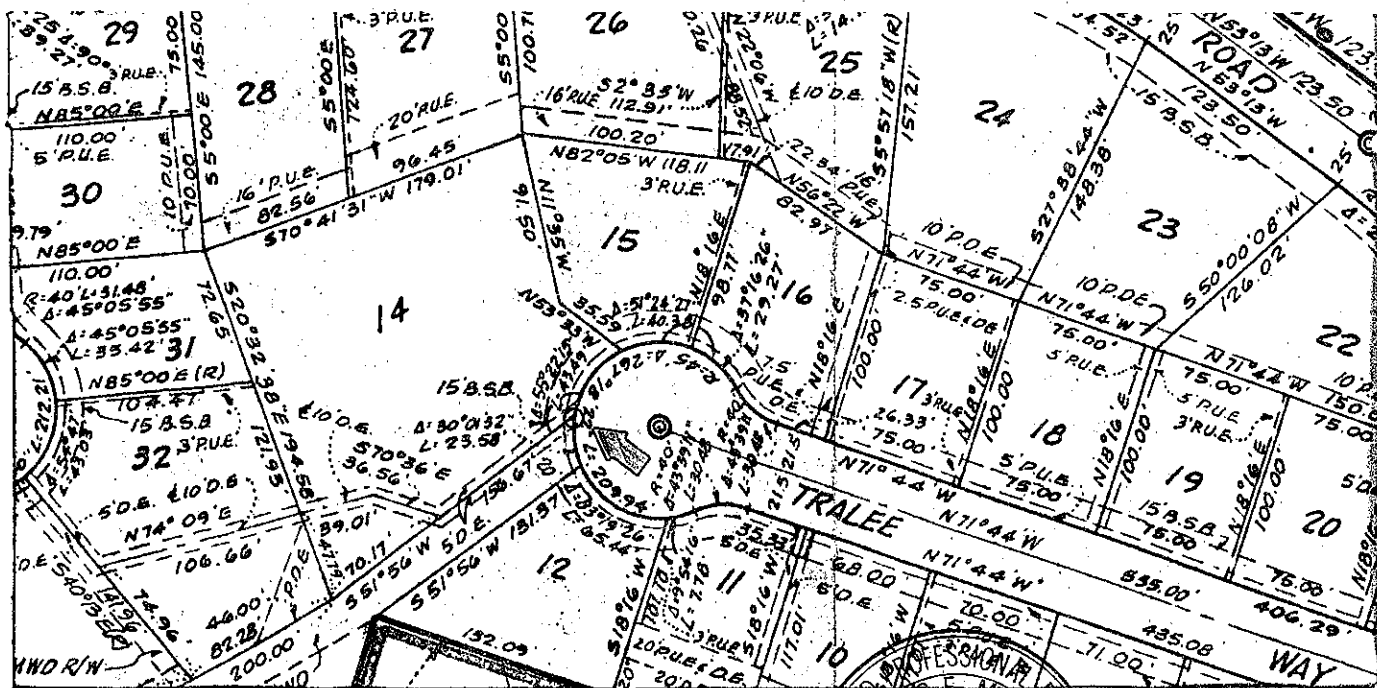
AS SHOWN

TREMOLADA J-1580

AP NO. 165-192-10

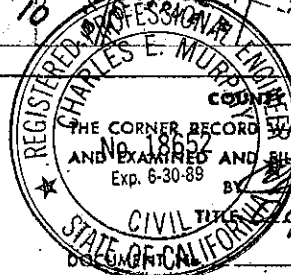
CALIFORNIA COORDINATE SYSTEM ORDER: FIRST SECOND THIRD
 STATIONS USED: NGS (USC & GS) STATE COUNTY OTHER STATION _____ STATION _____
 ZONE _____ ELEVATION _____ NORTHINGS (Y) _____ EASTINGS (X) _____

SKETCH: (Include reference tie or witness points, remarks and topo of area)



THIS CORNER RECORD WAS PREPARED BY ME OR UNDER MY DIRECTION IN CONFORMANCE WITH THE LAND SURVEYORS ACT ON 15 May 1987

SIGNED: Joseph Grippi
 L.S. or R.C.E. No. LS 3775
 STATE OF CALIFORNIA



COUNTY SURVEYOR'S CERTIFICATE

THE CORNER RECORD WAS RECEIVED _____ 19____

AND EXAMINED AND FOUND CORRECT BY Charles E. Murphy 7-20 1987
 Exp. 6-30-89
 CIVIL ENGINEER
 STATE OF CALIFORNIA

STATEMENT ON BACK OF SHEET

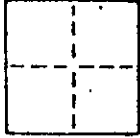
YES NO

CORNER RECORD

COUNTY OF Marin T. _____ R. _____ MERIDIAN _____ CALIFORNIA

CORNER TYPE: GOVT. CORNER MEANDER RANCHO CONTROL OTHER

CORNER IDENTIFICATION — DATE OF VISIT _____ 19____



CORNER — LEFT AS FOUND FOUND AND TAGGED REESTABLISHED OBLITERATED CORNER REBUILT

PHYSICAL DESCRIPTION OF CORNER FOUND; EVIDENCE AND METHOD USED TO IDENTIFY OR REESTABLISH

Set a 3/4" iron pipe with plastic plug embossed "LS 3775" at the most Southerly corner of Lot 14, "Map of Las Colindas Unit Ten" filed in Book 13 of Maps at Page 88, Marin County Records, by and per said Map.

PHYSICAL DESCRIPTION OF MONUMENTS REBUILT OR PERPETUATED

AS SHOWN

TREMOLADA J-1580

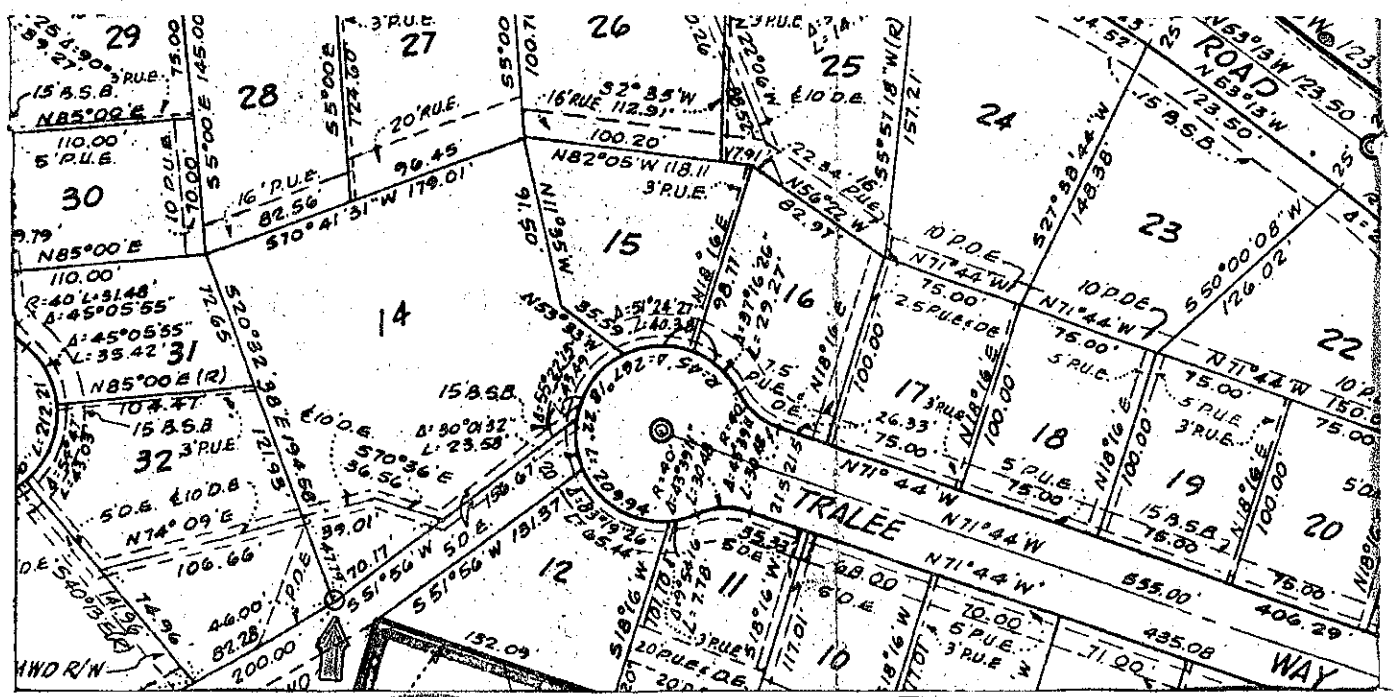
AP # 165-192-10

CALIFORNIA COORDINATE SYSTEM ORDER: FIRST SECOND THIRD

STATIONS USED: NGS (USC & GS) STATE COUNTY OTHER STATION _____ STATION _____

ZONE _____ ELEVATION _____ NORTHINGS (Y) _____ EASTINGS (X) _____

SKETCH: (Include reference tie or witness points, remarks and topo of area)



SURVEYOR'S CERTIFICATE

THIS CORNER RECORD WAS PREPARED BY ME OR UNDER MY DIRECTION IN CONFORMANCE WITH THE SURVEYORS ACT ON 15 MAY 1987

SIGNED: Joseph Grippo
L.S. or R.C.E. No. S.L.S. 3775
Expires 1993

STATE OF CALIFORNIA

COUNTY SURVEYOR'S CERTIFICATE

THE CORNER RECORD WAS RECEIVED _____ 19____ AND EXAMINED AND FILED 7-20 1987

No. 18652 TITLE: Dep. Co. Surv.

Exp. 6-30-89 DOCUMENT NO. _____

CIVIL ENGINEER STATE OF CALIFORNIA

REGISTERED PROFESSIONAL ENGINEER

BACK OF SHEET YES NO

CORNER RECORD

COUNTY OF Marin T. _____ R. _____ MERIDIAN CALIFORNIA

CORNER TYPE: GOVT. CORNER MEANDER RANCHO CONTROL OTHER

CORNER IDENTIFICATION — DATE OF VISIT _____ 19____



CORNER — LEFT AS FOUND FOUND AND TAGGED REESTABLISHED ORBLTERATED CORNER REBUILT

PHYSICAL DESCRIPTION OF CORNER FOUND; EVIDENCE AND METHOD USED TO IDENTIFY OR REESTABLISH

Set a 3/4" iron pipe iwth plastic plug embossed "LS 3775" at the most Westerly corner of Lot 14, "Map of Las Colindas Unit Ten" filed in Book 13 of Maps at Page 88, Marin County Records, by and per said Map.

PHYSICAL DESCRIPTION OF MONUMENTS REBUILY OR PERPETUATED

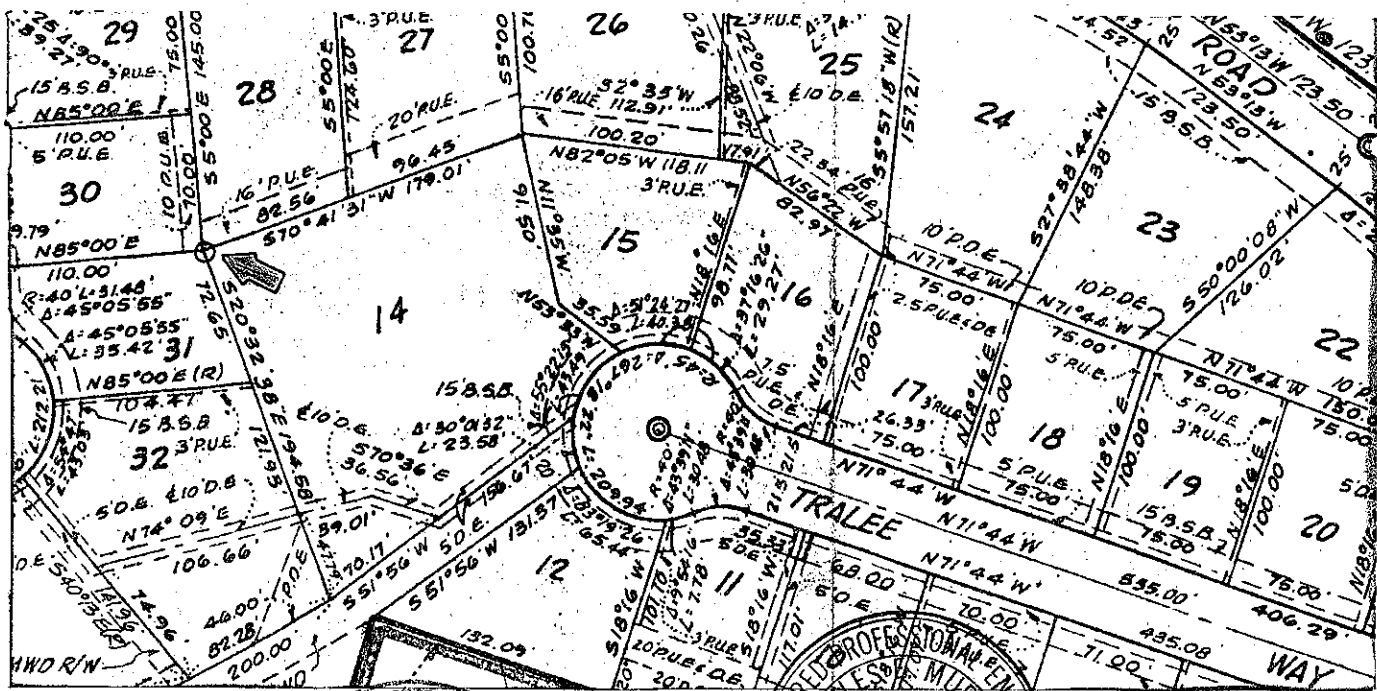
AS SHOWN

TREMOLADA J-1580

AP # 165-192-10

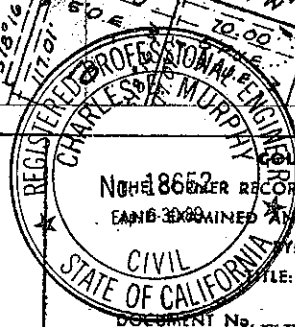
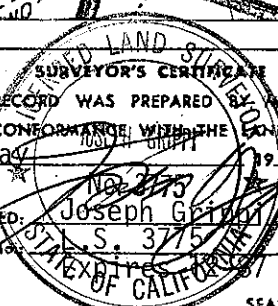
CALIFORNIA COORDINATE SYSTEM ORDER: FIRST SECOND THIRD
 STATIONS USED: NGS (USC & GS) STATE COUNTY OTHER STATION _____ STATION _____
 ZONE _____ ELEVATION _____ NORTHINGS (Y) _____ EASTINGS (X) _____

SKETCH: (Include reference tie or witness points, remarks and topo of area)



THIS CORNER RECORD WAS PREPARED BY ME OR UNDER MY DIRECTION IN CONFORMANCE WITH THE LAND SURVEYORS ACT ON 15 May 1987

SIGNED: Joseph Grinnell
 S. 3775
 L.S. or P.C.E. No. _____

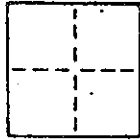


COUNTY SURVEYOR'S CERTIFICATE
 No. 18652 CORNER RECORD WAS RECEIVED _____ 19____
 EXAMINED AND FILED 7-20 1987
 Charles E. Murphy
 Dep. Co. Surv.
 DOCUMENT No. _____

STATEMENT ON BACK OF SHEET YES NO

CORNER RECORD

COUNTY OF MARIN T. _____ R. _____ MERIDIAN CALIFORNIA
 CORNER TYPE: GOV'T. CORNER MEANDER RANCHO CONTROL OTHER
 CORNER IDENTIFICATION — DATE OF VISIT _____ 19__



CORNER — LEFT AS FOUND FOUND AND TAGGED REESTABLISHED OBLITERATED CORNER REBUILT

PHYSICAL DESCRIPTION OF CORNER FOUND; EVIDENCE AND METHOD USED TO IDENTIFY OR REESTABLISH

Set a 3/4" iron pipe with plastic plub embossed "LS 3775" at the Most Northerly corner of Lot 14, "Map of Las Colindas Unit Ten" filed in Book 13 of Maps at Page 88, Marin County Records, by and per said Map.

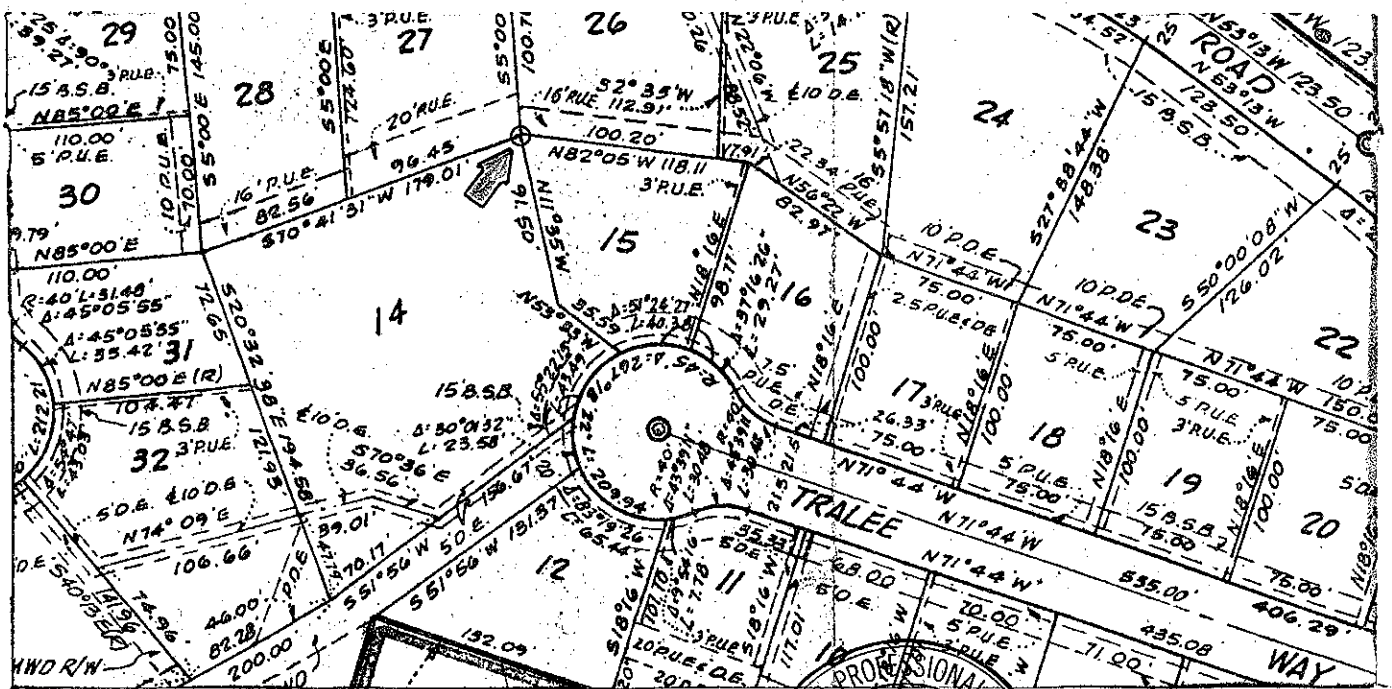
PHYSICAL DESCRIPTION OF MONUMENTS REBUILT OR PERPETUATED AS SHOWN

TREMOLADA J-1580

AP # 165-192-10

CALIFORNIA COORDINATE SYSTEM ORDER: FIRST SECOND THIRD
 STATIONS USED: NGS (USC & GS) STATE COUNTY OTHER STATION _____ STATION _____
 ZONE _____ ELEVATION _____ NORTHINGS (Y) _____ EASTINGS (X) _____

SKETCH: (Include reference tie or witness points, remarks and topo of area)



SURVEYOR'S CERTIFICATE
 THIS CORNER RECORD WAS PREPARED BY ME OR UNDER MY DIRECTION IN CONFORMANCE WITH THE LAND SURVEYORS ACT ON _____ 19__
 SIGNED: Joseph Grinn
 L.S. OF R.C.E. 3775
 STATE OF CALIFORNIA
 SEAL

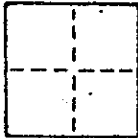
REGISTERED PROFESSIONAL ENGINEER
 COUNTY SURVEYOR'S CERTIFICATE
 THE CORNER RECORD WAS RECEIVED _____ 19__
 No. 18858 DATED AND FILED 7-20 19__
 Exp. 6-30-89
 CIVIL
 STATE OF CALIFORNIA
 STATEMENT ON BACK OF SHEET YES NO

CORNER RECORD

COUNTY OF MARIN T. _____ R. _____ MERIDIAN _____ CALIFORNIA

CORNER TYPE: GOVT. CORNER MEANDER RANCHO CONTROL OTHER

CORNER IDENTIFICATION — DATE OF VISIT _____ 19____



CORNER — LEFT AS FOUND FOUND AND TAGGED REESTABLISHED OBLITERATED CORNER REBUILT

PHYSICAL DESCRIPTION OF CORNER FOUND; EVIDENCE AND METHOD USED TO IDENTIFY OR REESTABLISH

Set a 3/4" iron pipe with plastic plub embossed "LS 3775" at the intersection of the courses "N 11 35' W 91.50'" and "N 53 33' W 35.59'" of Lot 14, "Map of Las Colindas Unit Ten" filed in Book 13 of Maps at Page 88, Marin County Records, by and per said Map.

PHYSICAL DESCRIPTION OF MONUMENTS REBUILT OR PERPETUATED

AS SHOWN

TREMOLADA J-1580

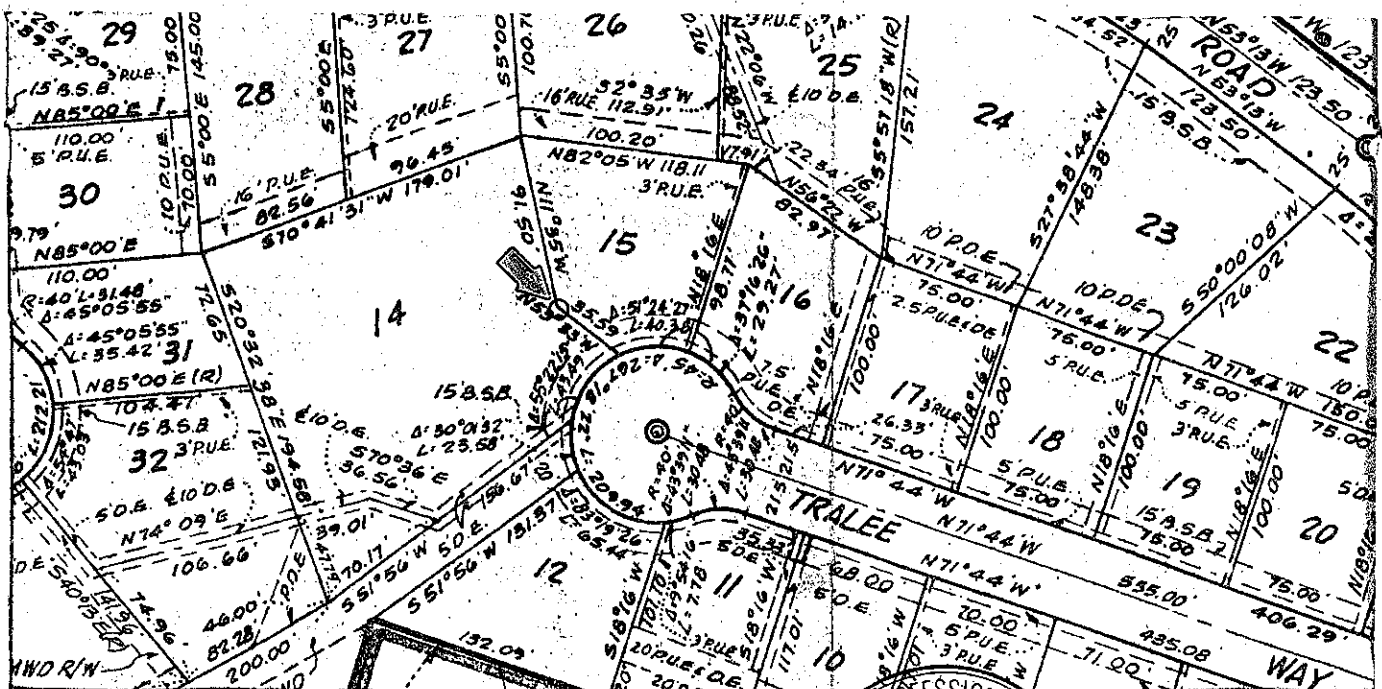
AP # 165-192-10

CALIFORNIA COORDINATE SYSTEM ORDER: FIRST SECOND THIRD

STATIONS USED: NGS (USC & GS) STATE COUNTY OTHER STATION _____ STATION _____

ZONE _____ ELEVATION _____ NORTHINGS (Y) _____ EASTINGS (X) _____

SKETCH: (Include reference tie or witness points, remarks and topo of area)



SURVEYOR'S CERTIFICATE
 THIS CORNER RECORD WAS PREPARED BY ME OR UNDER MY DIRECTION IN CONFORMANCE WITH THE LAND SURVEYORS ACT ON 15 May 1987.
 SIGNED: Joseph G. Murphy
 L.S. or R.C.E. No. LS: 3775
 Expires 12/31/88

REGISTERED PROFESSIONAL SURVEYOR'S CERTIFICATE
 THE CORNER RECORD WAS RECEIVED _____ 19____
 AND EXAMINED AND FOUND CORRECT BY Charles E. Murphy
 No. 18652 Exp. 6-30-89
 TITLE: Ap. Co. Surv.
 STATE OF CALIFORNIA
 STATIONED ON BACK OF SHEET

YES NO