

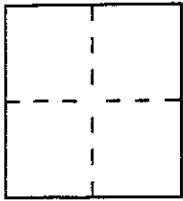
CORNER RECORD

Document Number A.P.N. 165-191-01

City of San Rafael

County of Marin, California

Brief Legal Description Lot 1 13 RM 88



CORNER TYPE

Government Corner Control
 Meander Property
 Rancho Other
 Date of Survey 10/09/98

COORDINATES (Optional)

N. _____
 E. _____
 Zone _____ Datum _____
 Elev. _____

Corner — Left as found Found and tagged Established Reestablished Rebuilt

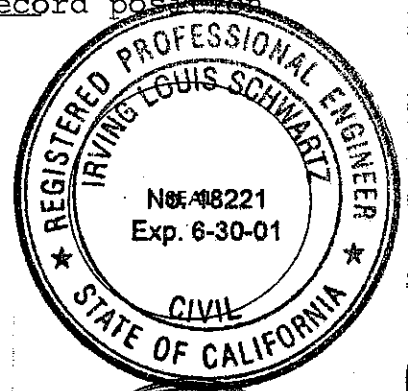
Identification and type of corner found: Evidence used to identify or procedure used to establish or reestablish the corner:
Found 2" brass disks in well monuments tagged RCE 10057 at the
northwesterly terminus and southeasterly terminus of the course
South 53°13'00" East on the centerline of Las Rasposas Road per 13 RM 88.

A description of the physical condition of the monument as found and as set or reset: Set lead plug and
tag RCE 18221 at the most westerly corner of lot 1 also set 3/4" iron
pipe tagged RCE 18221 at the angle point in the northeasterly
boundary of lot 1 as shown on 13 RM 88 also found 3/4" iron pipe
tagged RCE 10057 South 57°15'16" East 0.25 feet from record position
at the most northerly corner of lot 1.

SURVEYOR'S STATEMENT

This Corner Record was prepared by me or under my direction in conformance with
 the Land Surveyors' Act on OCTOBER 29 19 98

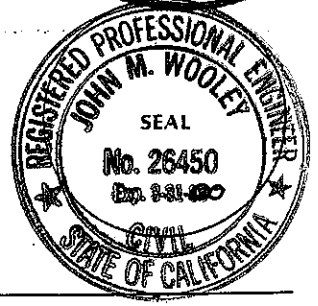
Signed [Signature] L.S. or R.C.E. Number 18221



COUNTY SURVEYOR'S STATEMENT

This Corner Record was received OCTOBER 30 19 98 and examined
 and filed OCTOBER 30 19 98.

Signed [Signature] Title DEPUTY



County Surveyor's Comment _____

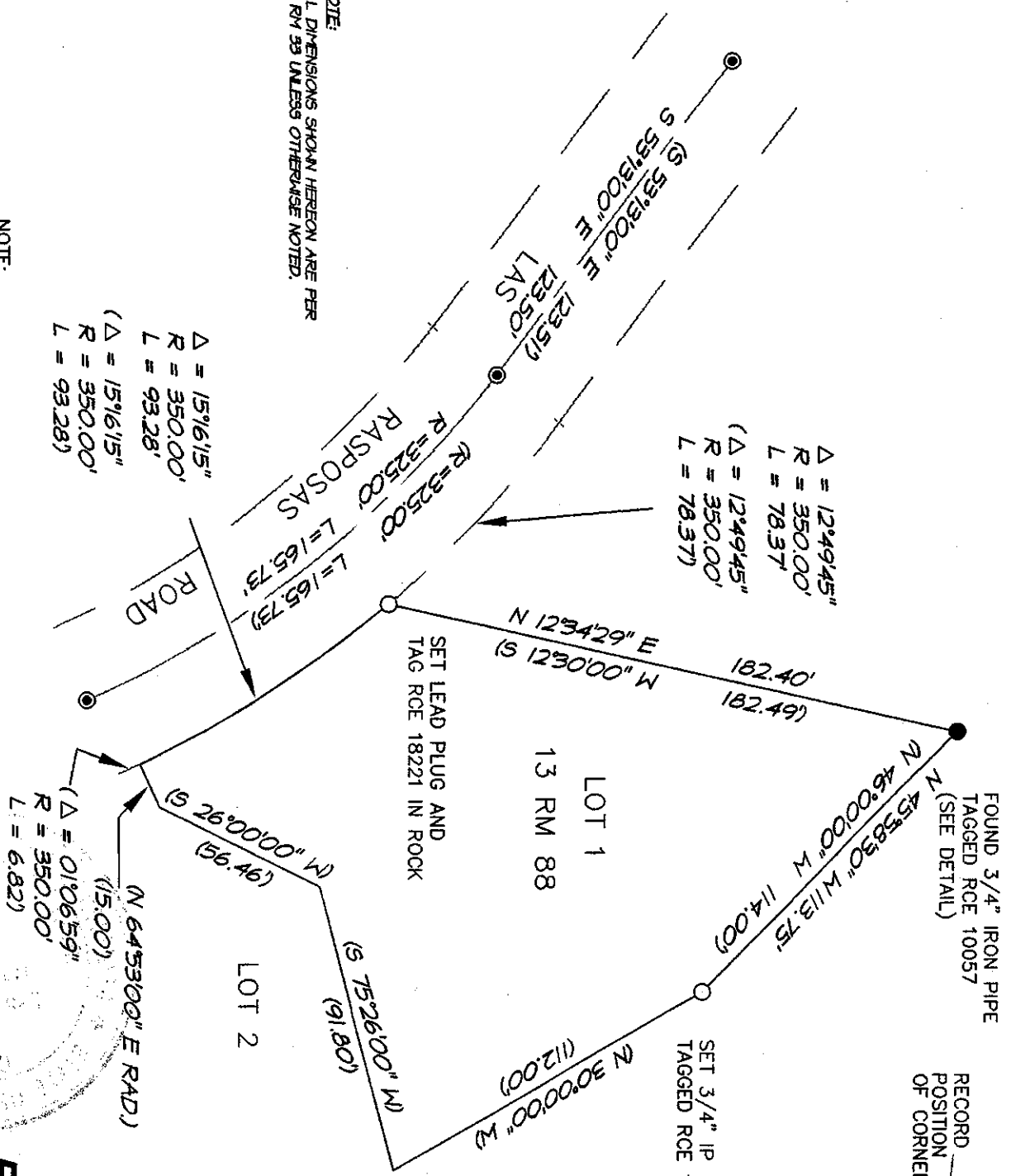
NOTE:
 ALL DIMENSIONS SHOWN HEREON ARE PER
 18 RM 93 UNLESS OTHERWISE NOTED.

$\Delta = 15'6.15"$
 $R = 350.00'$
 $L = 93.28'$
 $(\Delta = 15'6.15"$
 $R = 350.00'$
 $L = 93.28')$

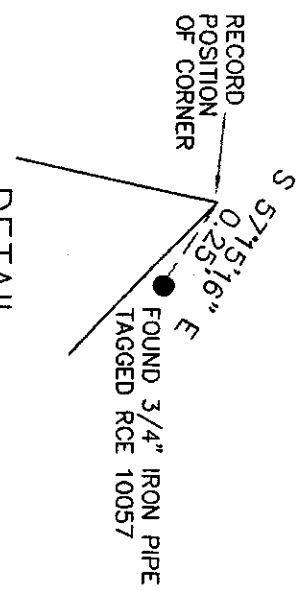
$\Delta = 12'49.45"$
 $R = 350.00'$
 $L = 78.37'$
 $(\Delta = 12'49.45"$
 $R = 350.00'$
 $L = 78.37')$

NOTE:

- = FOUND 2" BRASS DISK IN WELL MON
 TAGGED RCE 10057
- () = RECORD DATA PER 13 RM 88



DETAIL
 NOT TO SCALE



SCALE: 1" = 50'

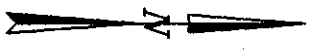


EXHIBIT "A"

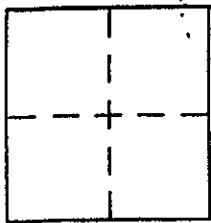
I. L. SCHWARTZ ASSOCIATES, INC.
 CIVIL ENGINEERING AND LAND SURVEYING
 79 GALLI DRIVE, NOVATO, CA 94949 (415) 883-9200

CORNER RECORD

Document Number 165-191-01
County of MARIN, California

City of SAN RAFAEL

Brief Legal Description LANDS OF TURPIE 13RM 88, 3079 OR 352 (1976)
AP No. 165-191-01



CORNER TYPE

- Government Corner Control
- Meander Property
- Rancho Other
- Date of Survey _____

COORDINATES (Optional)

- N. _____
- E. _____
- Zone _____ NAD27 NAD83
- NAD83 Epoch _____
- Elev. _____
- Vert. Datum: NGVD29 NAVD83
- Meas. Units: Metric Imperial

Corner -- Left as found Found and tagged Established Reestablished Rebuilt

Identification and type of corner found: Evidence used to identify or procedure used to establish or reestablish the corner:
SET CORNERS WITH 3/4" IP RCE 30465 AS PER 13RM 88

BASIS OF BOUNDARY ESTABLISHED USING TWO FOUND CENTERLINE STREET MONUMENTS ON LAS RAPOSAS ROAD AS PER (13RM 88)

A description of the physical condition of the monument as found and as set or reset:
4 set 3/4" IP RCE 30465
3 found centerline street monuments
2 set 1 1/2" x 1 1/2" HUB AND TACK
3 FOUND CENTERLINE STREET MONUMENTS (BRASS CAP WITH CAST IRON COVER)

SURVEYOR'S STATEMENT

This Corner Record was prepared by me or under my direction in conformance with the Land Surveyor's Act on 06/22/2001

Signed [Signature] P.L.S or R.C.E. No. RCE 30465

COUNTY SURVEYOR'S STATEMENT

This Corner Record was received JULY 23, 2001

and examined and filed JULY 26, 2001

Signed [Signature] P.L.S or R.C.E. No. 26450

Title DEPUTY

County Surveyor's Comment _____



BASIS OF BEARINGS

THE BASIS OF BEARINGS FOR THIS SURVEY IS BETWEEN FOUND MONUMENT AT CENTER LINE OF LAS RAPOSAS ROAD, 25' FROM MOST NORTHERN CORNER OF LOT 22 AT A BEARING OF N 36 '47' 00 E (13 RM 88), AND FOUND MONUMENT AT CENTER LINE OF INTERSECTION OF LAS RAPOSAS ROAD AND TRALEE WAY (13 RM 88), SAID BASIS OF BEARING BEING S 23'33'00" E, 338.58'.



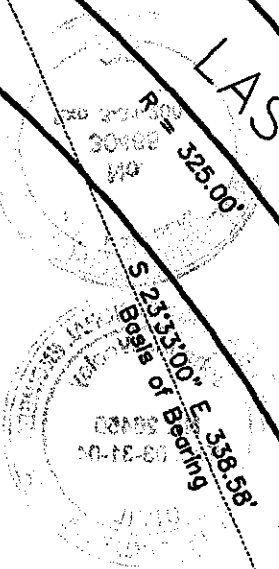
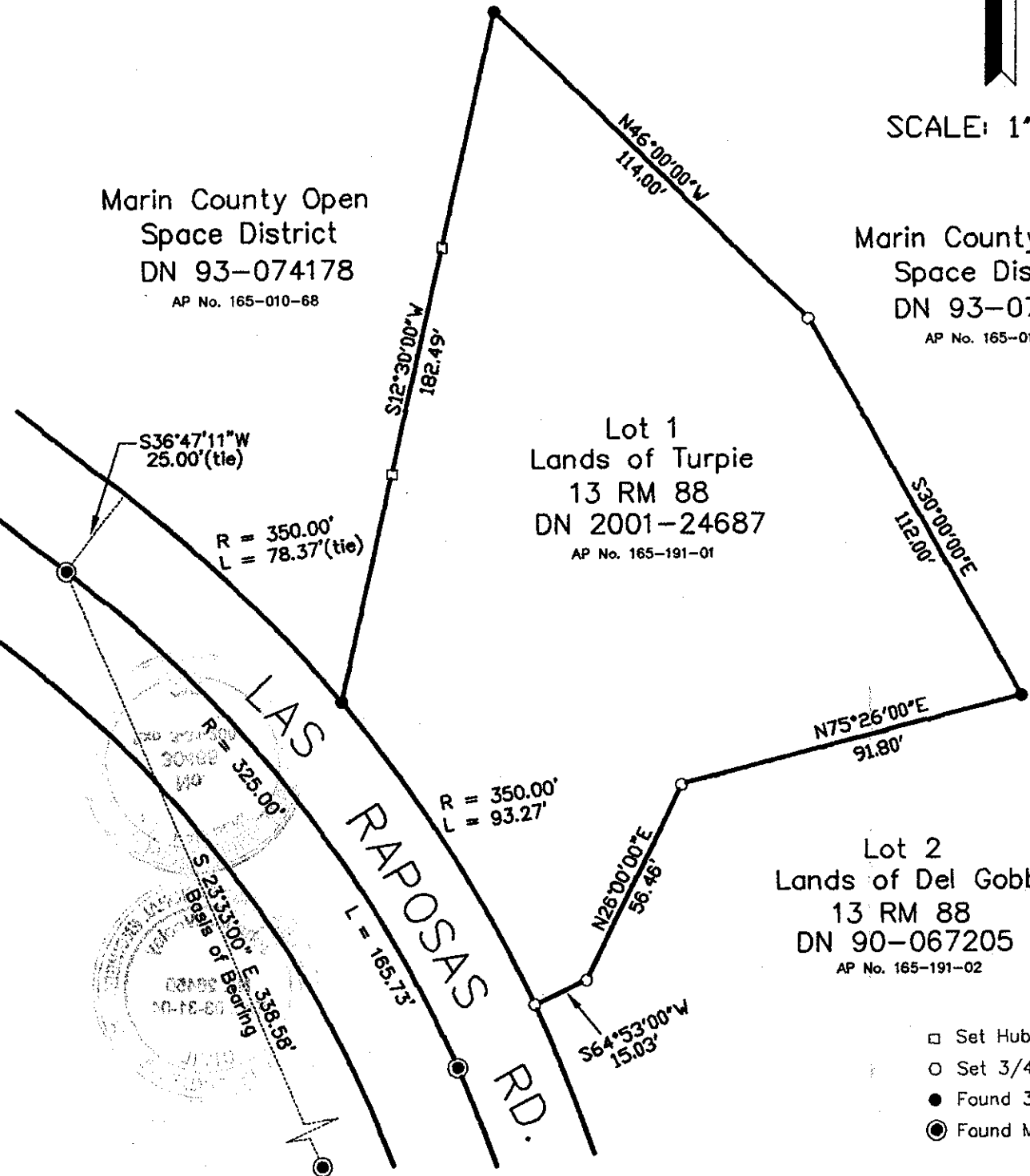
SCALE: 1" = 40'

Marin County Open
Space District
DN 93-074178
AP No. 165-010-68

Marin County Open
Space District
DN 93-074178
AP No. 165-010-68

Lot 1
Lands of Turpie
13 RM 88
DN 2001-24687
AP No. 165-191-01

Lot 2
Lands of Del Gobbo
13 RM 88
DN 90-067205
AP No. 165-191-02



- Set Hub and Tack
- Set 3/4" IP RCE 30465
- Found 3/4" IP, No Tag
- ⊙ Found Monumentation

1	of	1	SHEETS
SCALE:	1"=40'	DRAWN:	M.D.H.
DATE:	6-22-01	TRAVEL:	T.J.W.
FILE:	01-077	CHECKED:	J.L.H.

J.L. ENGINEERING
CIVIL ENGINEERS-LAND SURVEYORS
1539 4th ST., SAN RAFAEL, CA 94901 (415) 457-6647

CORNER RECORD
Turpie Residence
1316 Las Raposas Rd. - AP No. 165-191-01
San Rafael, Marin County, California