

**CORNER RECORD**

City of San Rafael

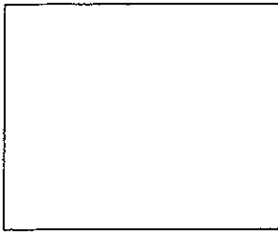
County of Marin,

Document Number A.P.N. 165-181-19

State of California

Brief Legal Description: Lot 154, "Map of San Rafael Park, Unit Three", 13 RM 65, M.C.R.

APN 165-181-019



Corner Type

Coordinates (optional)

Government Corner  Control   
Meander  Property   
Rancho  Other   
Date of Survey July 24, 2000

N.  
E.  
Zone \_\_\_\_\_ Datum  
Elev.

Corner - Left as found  Found and tagged  Established  Reestablished  Rebuilt

Identification and type of corner found; Evidence used to identify or procedure used to establish or re-establish the corner: Record corner positions for the northerly corners of Lot 154, "Map of San Rafael Park, Unit Three" were re-established from record map information and the found street well monuments as shown on said map.

A description of the physical condition of the monument as found and as set or reset:  
No monument was found. Set 3/4" iron pipe tagged LS 5087

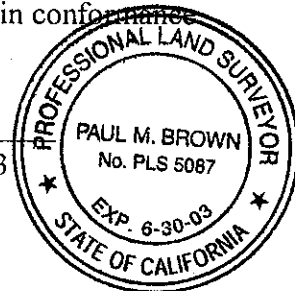
**SURVEYOR'S STATEMENT**

This Corner Record was prepared by me or under my direction in conformance with the Land Surveyor's Act on July 24, 2000.

Signed

*Paul M. Brown*

Paul M. Brown, PLS 5087, my license expires 6/30/03



**COUNTY SURVEYOR'S STATEMENT**

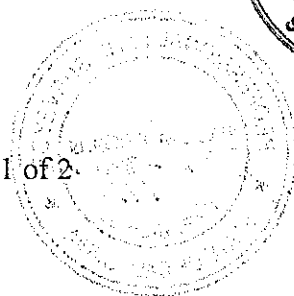
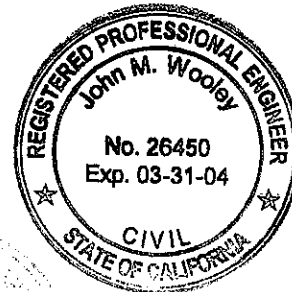
This Corner Record was received August 8, 2000 and examined and filed August 9, 2000.

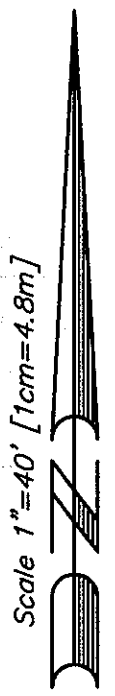
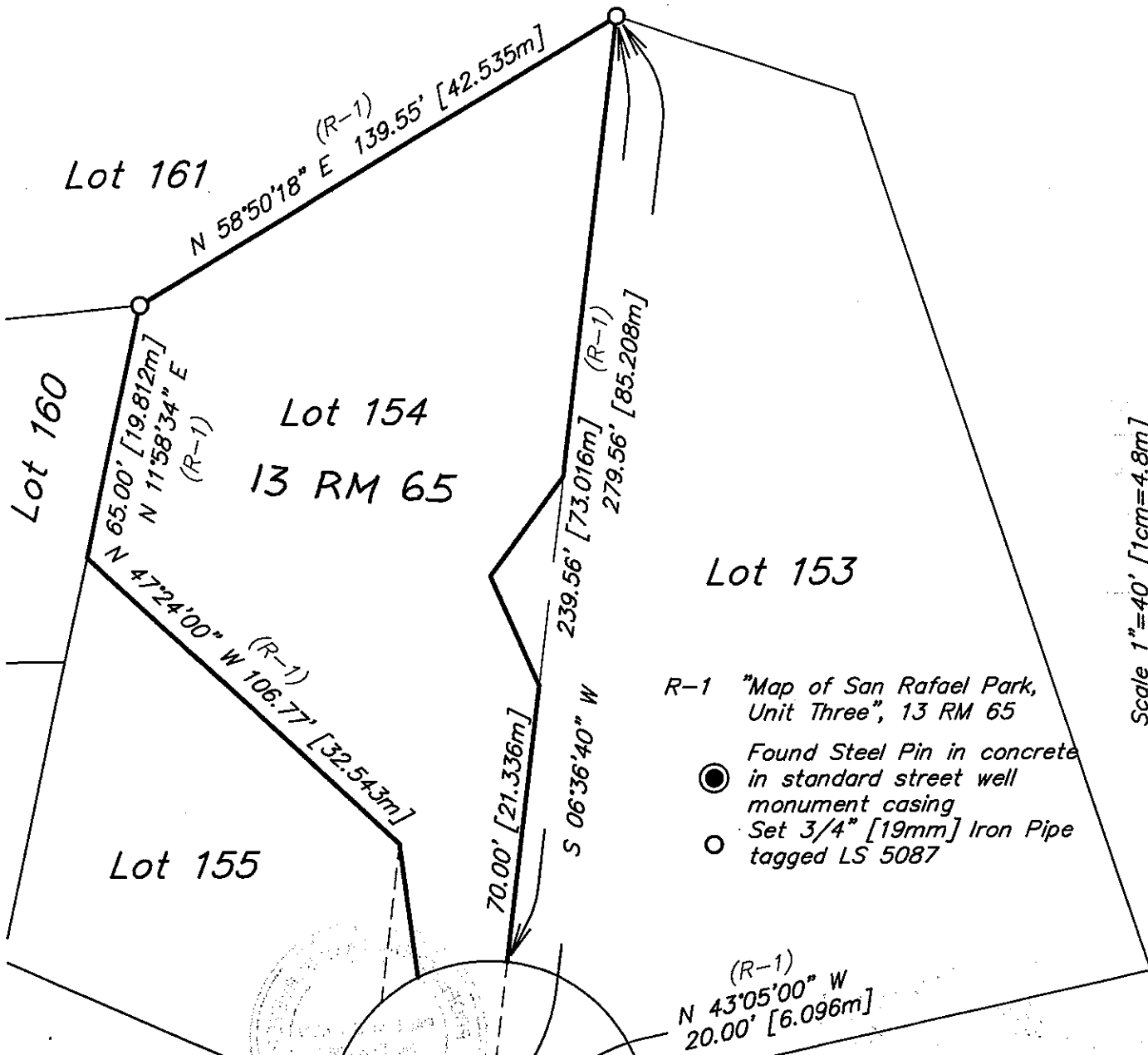
Signed

*John M. Wooley*

Title Deputy

County Surveyor's Comment:





- R-1 "Map of San Rafael Park, Unit Three", 13 RM 65
- Found Steel Pin in concrete in standard street well monument casing
  - Set 3/4" [19mm] Iron Pipe tagged LS 5087

(R-1)  
N 43°05'00" W  
20.00' [6.096m]

Distances are shown in feet & decimals thereof followed by distances shown in meters [ m ], centimeters [ cm ], or millimeters [ mm ] and decimals thereof. To convert from feet to meters, multiply by 0.3048; to convert from meters to feet, multiply by 3.2808

(N 71°06'02" E 331.32' calc. R-1)  
(N 71°06'02" E 331.38' [101.005m])  
Basis of Bearings of  
Corte  
Almaden

## Corner Record Plat

Lot 154, "Map of San Rafael Park, Unit 3", 13 RM 65

Lands of Pency Lee per Document Number 1999-0082408, Marin County Records APN 165-181-019

PROFESSIONAL LAND SURVEYOR  
PAUL M. BROWN  
No. PLS 3087  
Paul M. Brown, PLS 3087  
my license expires 6-30-83 5087  
STATE OF CALIFORNIA 03



**Adobe Associates, Inc.**  
Civil Engineering,  
Land Surveying &  
Land Development  
Services  
415  
Russell Avenue  
Santa Rosa,  
CA 95403  
707 528 2664  
Fax: 707 528 0331