



**JERRICO ASSOCIATES**  
 SUITE 27  
 77 MARK DRIVE  
 SAN RAFAEL, CA 94903

A.P. # 165-171-11 6684

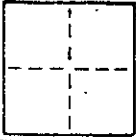
**CORNER RECORD**

1/2

COUNTY OF Marin T. \_\_\_\_\_ R. \_\_\_\_\_ MERIDIAN CALIFORNIA

CORNER TYPE: GOVT. CORNER  MEANDER  RANCHO  CONTROL  OTHER

CORNER IDENTIFICATION — DATE OF VISIT \_\_\_\_\_ 19\_\_



CORNER — LEFT AS FOUND  FOUND AND TAGGED  REESTABLISHED OBLITERATED CORNER  REBUILT

PHYSICAL DESCRIPTION OF CORNER FOUND; EVIDENCE AND METHOD USED TO IDENTIFY OR REESTABLISH

Found standard monuments at intersection of Las Gallinas Avenue and Corte Almaden and southerly Mon. of tangent 296' sl'y on Las Gallinas.

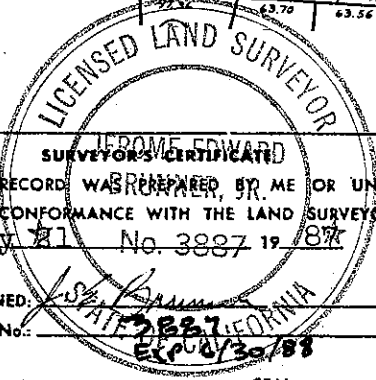
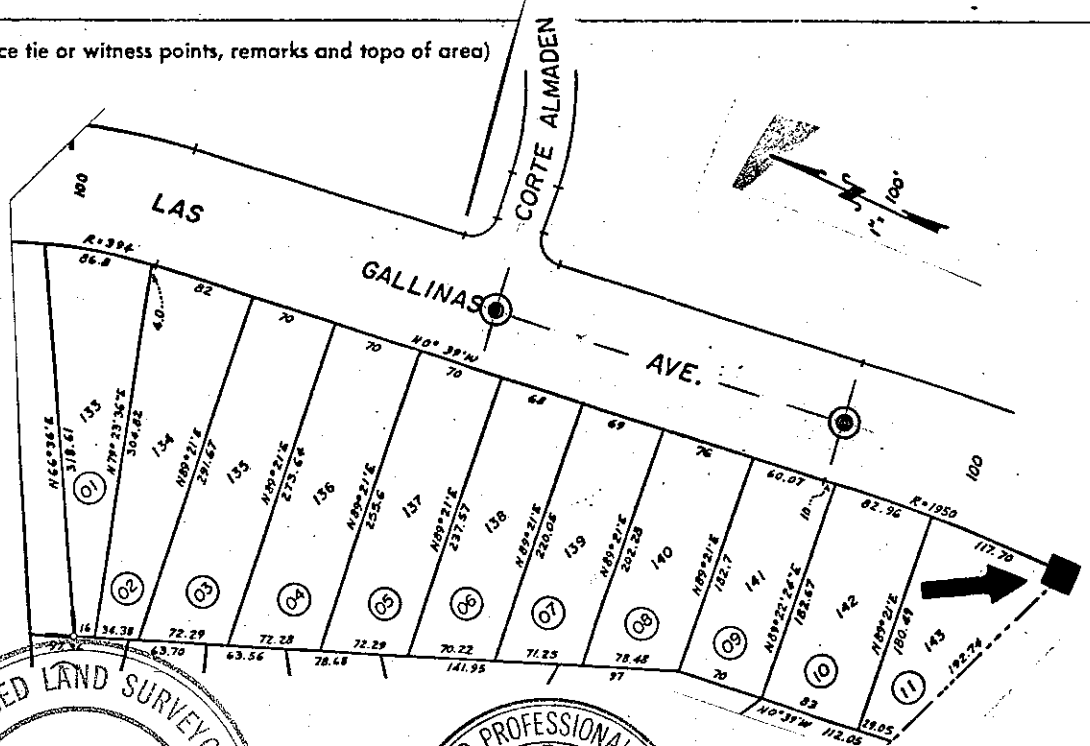
Ptn. Lot 143 San Rafael Park Unit 3 13 R.M. 65

PHYSICAL DESCRIPTION OF MONUMENTS REBUILT OR PERPETUATED

Set hub and tag L.S. 3887

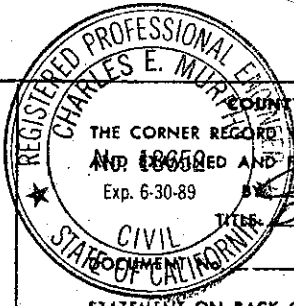
CALIFORNIA COORDINATE SYSTEM ORDER: FIRST  SECOND  THIRD   
 STATIONS USED: NGS (USC & GS)  STATE  COUNTY  OTHER  STATION \_\_\_\_\_ STATION \_\_\_\_\_  
 ZONE \_\_\_\_\_ ELEVATION \_\_\_\_\_ NORTHINGS (Y) \_\_\_\_\_ EASTINGS (X) \_\_\_\_\_

SKETCH: (Include reference tie or witness points, remarks and topo of area)



THIS CORNER RECORD WAS PREPARED BY ME OR UNDER MY DIRECTION IN CONFORMANCE WITH THE LAND SURVEYORS ACT ON May 31 No. 3887 19 87

SIGNED: [Signature]  
 L.S. or R.C.E. No.: \_\_\_\_\_



COUNTY SURVEYOR'S CERTIFICATE  
 THE CORNER RECORD WAS RECEIVED \_\_\_\_\_ 19\_\_  
 AND FILED 720- 19 87  
 Exp. 6-30-89  
 CIVIL ENGINEER  
 STATE OF CALIFORNIA

STATEMENT ON BACK OF SHEET

YES  NO

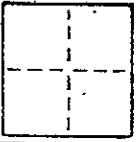
**CORNER RECORD**

2/2

COUNTY OF Marin T. \_\_\_\_\_ R. \_\_\_\_\_ MERIDIAN \_\_\_\_\_ CALIFORNIA

CORNER TYPE: GOVT. CORNER  MEANDER  RANCHO  CONTROL  OTHER

CORNER IDENTIFICATION — DATE OF VISIT \_\_\_\_\_ 19\_\_



CORNER — LEFT AS FOUND  FOUND AND TAGGED  REESTABLISHED OBLITERATED CORNER  REBUILT

PHYSICAL DESCRIPTION OF CORNER FOUND; EVIDENCE AND METHOD USED TO IDENTIFY OR REESTABLISH

⊙ Found standard monuments at intersection of Las Gallinas Avenue and Corte Almaden and southerly Mon. of tangent 296' sl'y on Las Gallinas.

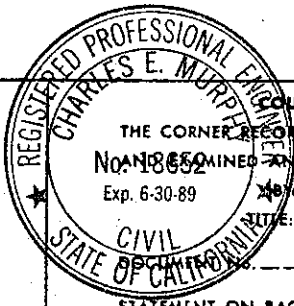
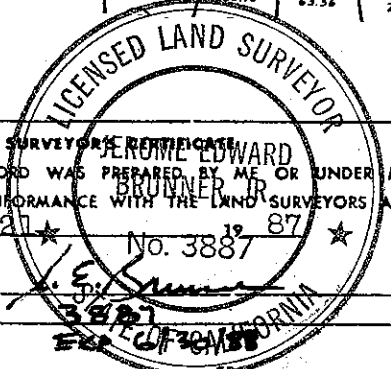
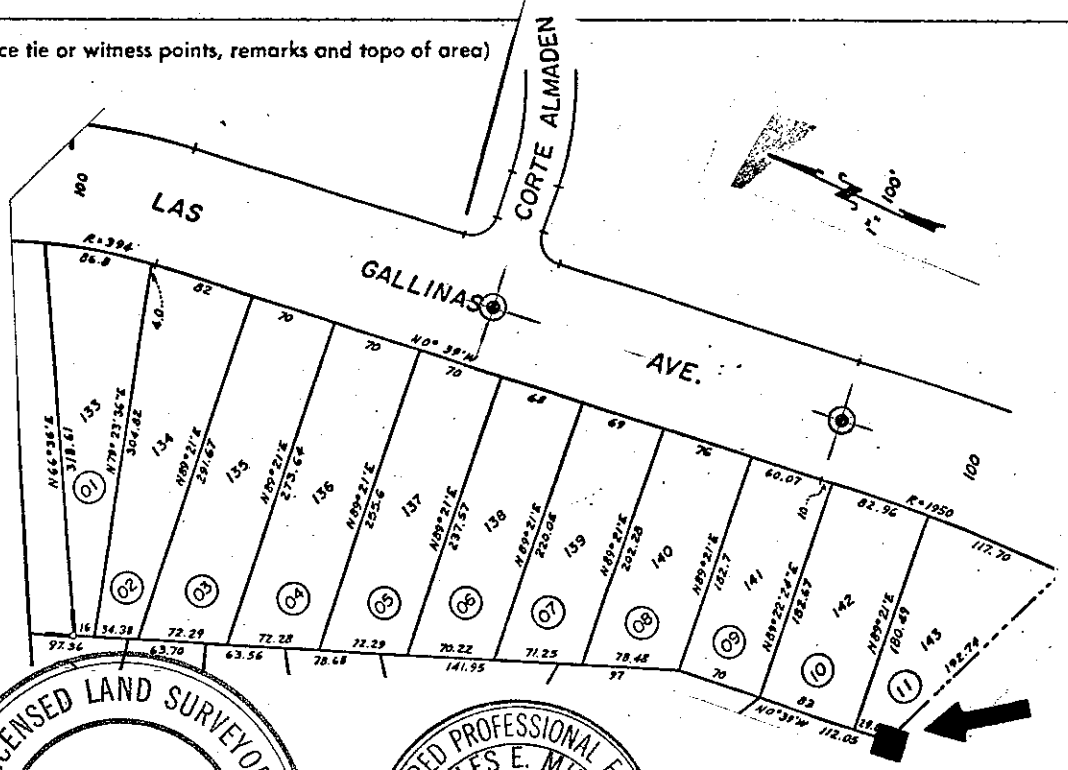
Ptn. Lot 143 San Rafael Park Unit 3 13 R.M. 65

PHYSICAL DESCRIPTION OF MONUMENTS REBUILT OR PERPETUATED

Set hub and tag L.S. 3887

CALIFORNIA COORDINATE SYSTEM ORDER: FIRST  SECOND  THIRD   
 STATIONS USED: NGS (USC & GS)  STATE  COUNTY  OTHER  STATION \_\_\_\_\_ STATION \_\_\_\_\_  
 ZONE \_\_\_\_\_ ELEVATION \_\_\_\_\_ NORTHINGS (Y) \_\_\_\_\_ EASTINGS (X) \_\_\_\_\_

SKETCH: (Include reference tie or witness points, remarks and topo of area)



SURVEYOR'S CERTIFICATE  
 THIS CORNER RECORD WAS PREPARED BY ME OR UNDER MY DIRECTION IN CONFORMANCE WITH THE LAND SURVEYORS ACT ON May 21 1987  
 No. 3887

SIGNED: \_\_\_\_\_  
 L.S. or R.C.E. No.: \_\_\_\_\_

COUNTY SURVEYOR'S CERTIFICATE  
 THE CORNER RECORD WAS RECEIVED \_\_\_\_\_ 19\_\_  
 No. 18652 EXAMINED AND FILED 7-20 1987  
 Exp. 6-30-89  
 CIVIL ENGINEER  
 STATE OF CALIFORNIA  
 SITE: D.P.C. Co. SURV.

STATEMENT ON BACK OF SHEET

YES  NO