

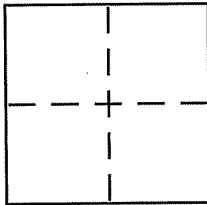
CORNER RECORD

Document Number 165-143-17

City of SAN RAFAEL

County of MARIN, California

Brief Legal Description LOT 60 PER "SAN RAFAEL PARK" 13 RM 17



CORNER TYPE

Government Corner Control
Meander Property
Rancho Other
Date of Survey FEB 26, 2008

COORDINATES (Optional)

N. _____
E. _____
Zone _____ NAD27 NAD83
NAD83 Epoch _____
Elev. _____
Vert. Datum: NGVD29 NAVD88
Meas. Units: Metric Imperial

Corner - Left as found Found and tagged Established Reestablished Rebuilt

Identification and type of corner found: Evidence used to identify or procedure used to establish or reestablish the corner:

FOUND & HELD CENTERLINE MONUMENTS, SEE PAGE 2

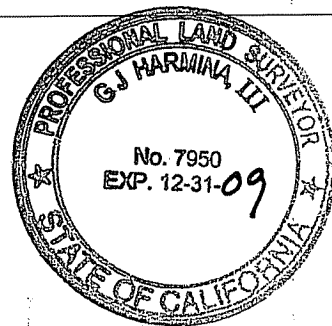
A description of the physical condition of the monument as found and as set or reset:

SET BRASS NAIL & TAG IN SHORT BRICK WALL AT SOUTH-EAST CORNER, SET 5/8" REBAR W/ YELLOW CAP @ NORTH EAST CORNER, SEE PAGE 2

SURVEYOR'S STATEMENT

This Corner Record was prepared by me or under my direction in conformance with the Land Surveyor's Act on FEBRUARY 26, 2008

Signed [Signature] P.L.S. or R.C.E. No. 7950



COUNTY SURVEYOR'S STATEMENT

This Corner Record was received MARCH 12, 2008

and examined and filed MARCH 31, 2008

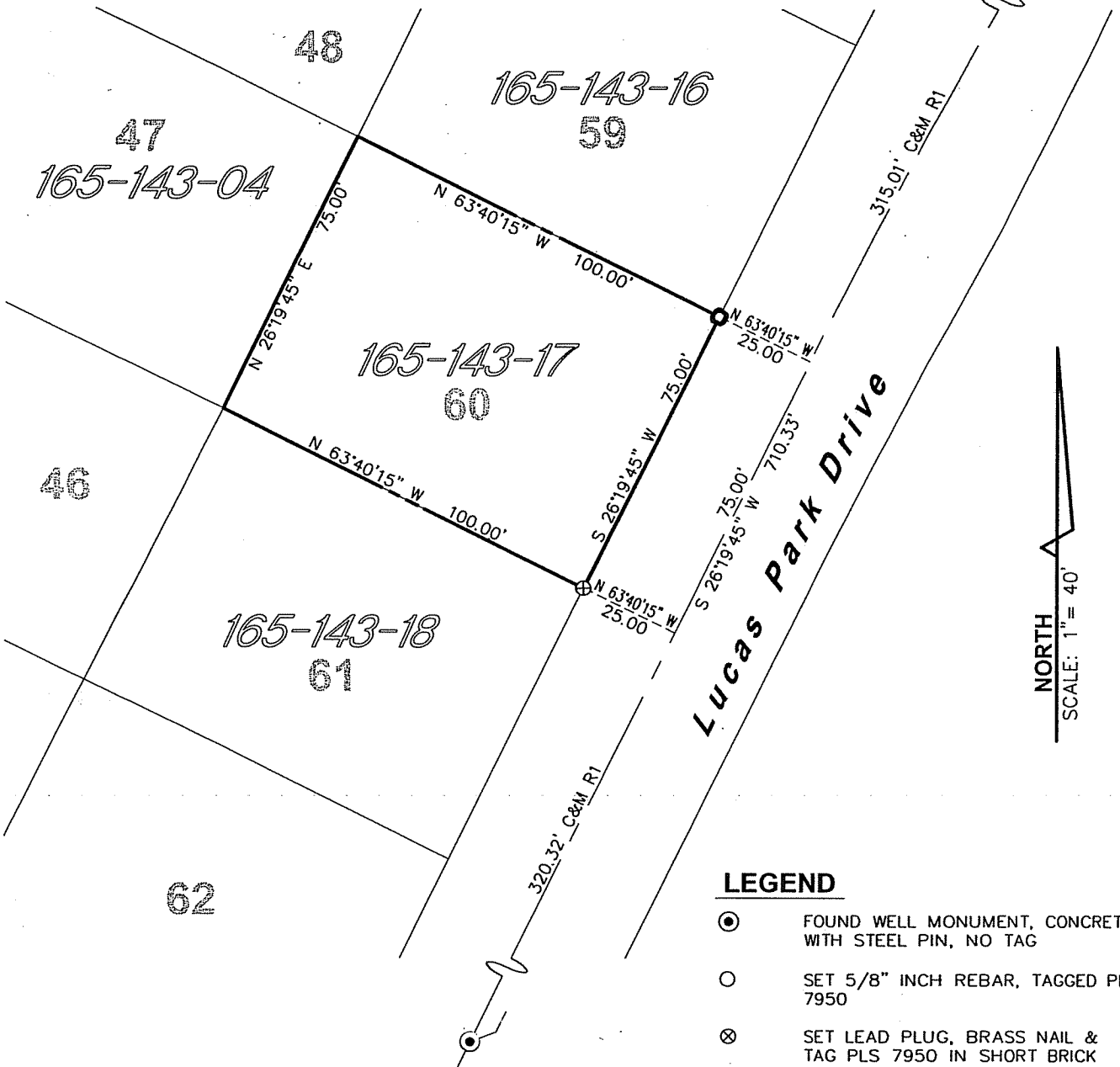
Signed [Signature] P.L.S. or R.C.E. No. 7128

Title COUNTY SURVEYOR



County Surveyor's Comment _____

13 MAPS 17



NORTH
SCALE: 1" = 40'

LEGEND

- ⊙ FOUND WELL MONUMENT, CONCRETE WITH STEEL PIN, NO TAG
- SET 5/8" INCH REBAR, TAGGED PLS 7950
- ⊗ SET LEAD PLUG, BRASS NAIL & TAG PLS 7950 IN SHORT BRICK WALL
- C&M R1 CALCULATED AND MEASURED PER RECORD MAP, "MAP OF LUCAS PARK," FILED 13 RM 17, MCR

NOTES

1. RECORD EQUALS MEASURED.
2. NO EASEMENTS ARE SHOWN.

STEVEN J. LAFRANCHI & ASSOCIATES, INC.
CIVIL ENGINEERS - LAND SURVEYORS - LAND PLANNERS

PETALUMA MARINA BUSINESS CENTER
 PETALUMA, CALIFORNIA 94954
 775 BAYWOOD DRIVE, SUITE 312
 707-762-3122 FAX 707-762-3239