

L. A. Stevens & Associates, Inc.
 Professional Land Surveyors
 Novato, California

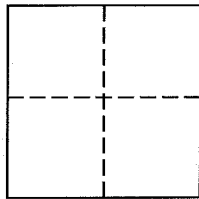
Lands of Stroes
Job #: 151686

CORNER RECORD

Document Number 165-141-25

City of San Rafael in County of Marin, California

Brief Legal Description: Being Lot 25, per "San Rafael Park Unit No. 1" filed in Book 13 of Maps, at Page 17, Marin County Records.



CORNER TYPE

COORDINATES (Optional)

Government Corner Control
 Meander Property
 Rancho Other

N _____
 E _____
 Zone _____ NAD27 NAD83
 NAD 83 Epoch _____
 Elev. _____
 Vert. Datum: NGVD29 NAVD88
 Meas. Units: Metric Imperial

Date of Survey October 16, 2015

Corner - Left as found Found and tagged Established Reestablished Rebuilt

Identification and type of corner found: Evidence used to identify or procedure used to establish or reestablish the corner:
 See Page 2 of 2 for information

A description of the physical condition of the monument as found and as set or reset:
 See Page 2 of 2 for information

SURVEYOR'S STATEMENT

This Corner Record was prepared by me or under my direction in conformance with
 The Land Surveyor's Act on October 29, 2015.

Signed [Signature] P.L.S. 6649



COUNTY SURVEYOR'S STATEMENT

This Corner Record was received NOVEMBER 17, 2015

and examined and filed NOVEMBER 24, 2015

Signed [Signature] P.L.S. or-R.C.E. No. 7821

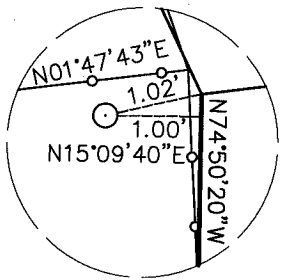
Title County Surveyor

County Surveyors' Comment _____



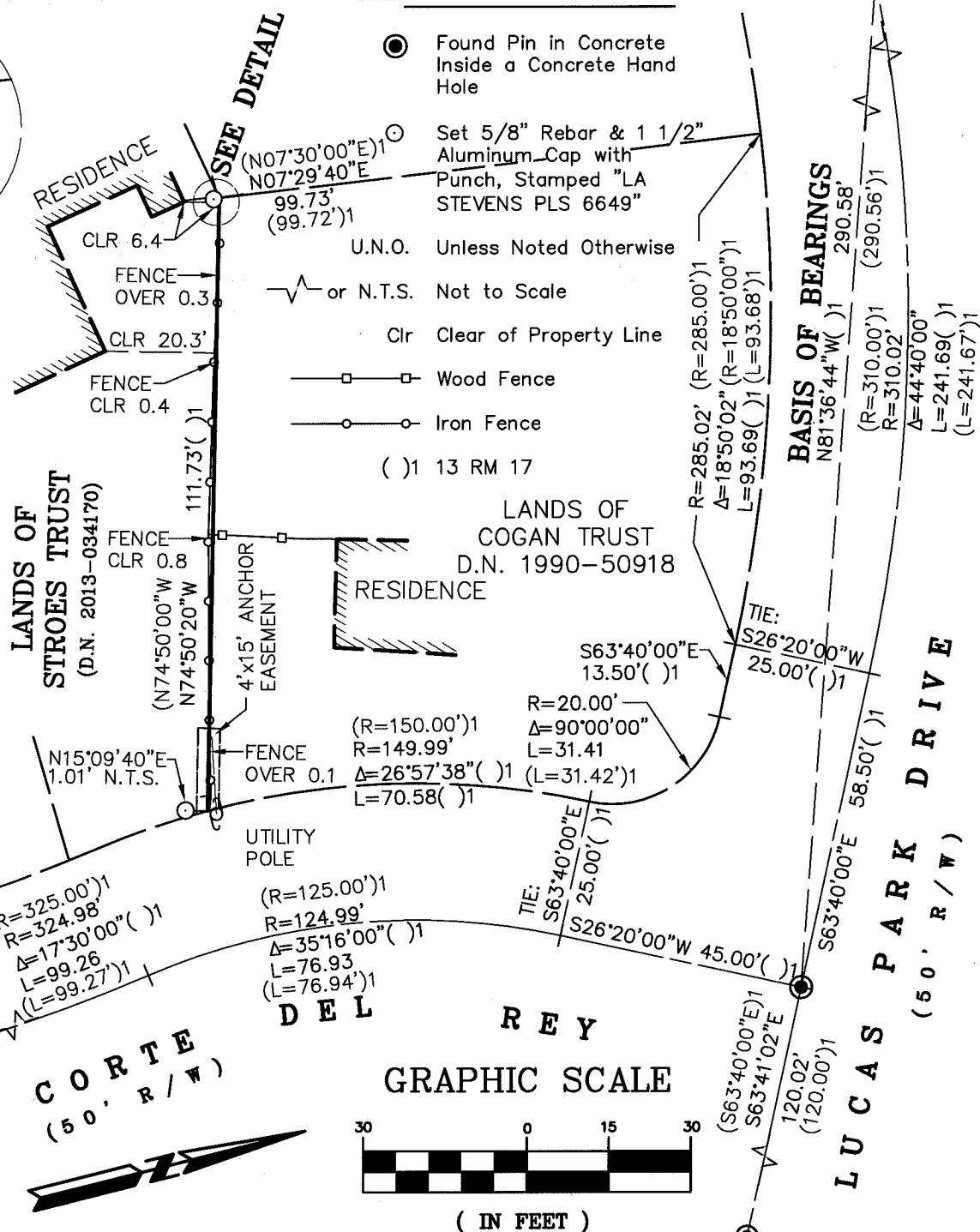
All distances shown are in feet and decimals thereof

LEGEND

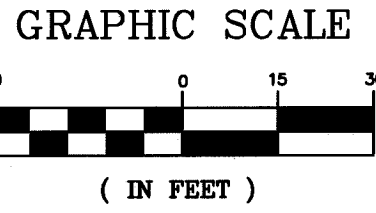


DETAIL
N.T.S.

- Found Pin in Concrete Inside a Concrete Hand Hole
- Set 5/8" Rebar & 1 1/2" Aluminum Cap with Punch, Stamped "LA STEVENS PLS 6649"
- U.N.O. Unless Noted Otherwise
- or N.T.S. Not to Scale
- Clr Clear of Property Line
- Wood Fence
- Iron Fence
- () 13 RM 17



CORTE DEL REY
(50' R/W)



Corner Record Lands of Stroes Trust

(D.N. 2013-034170)
(Lot 25, 13 Map 17)
San Rafael Marin County California
Scale: 1" = 30' October 2015
L.A. Stevens & Associates, Inc.
Professional Land Surveyors * (415) 382-7713
7 Commercial Blvd., Suite 1 * Novato, CA 94949

Lawrence A. Stevens, PLS 6649