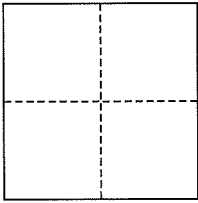


CORNER RECORD

City of San Rafael

Document Number AP# 165-093-22
County of Marin, California

Brief Legal Description Lot 1, 3 RS 124



CORNER TYPE

Government Corner Control
Meander Property
Rancho Other
Date of Survey April 15, 2016

COORDINATES (Optional)

N. _____
E. _____
Zone _____ NAD27 NAD83
NAD83 Epoch _____
Elev. _____
Vert. Datum: NGVD29 NAVD88
Meas. Units: Metric Imperial

Corner- Left as found Found and tagged Established Reestablished Rebuilt

Identification and type of corner found: Evidence used to identify or procedure used to establish or reestablish the corner:
Found original Standard Street Mons, per 3 RS 124.

A description of the physical condition of the monument as found and as set or reset: All Property Corners and Property Line points were found & set as shown hereon, per 3 RS 124.

SURVEYOR'S STATEMENT

This corner Record was prepared by me or under my direction in conformance with
the Land Surveyor's Act on April 18, 2016

Signed [Signature] P.L.S. or R.C.E. No. 30465



COUNTY SURVEYOR'S STATEMENT

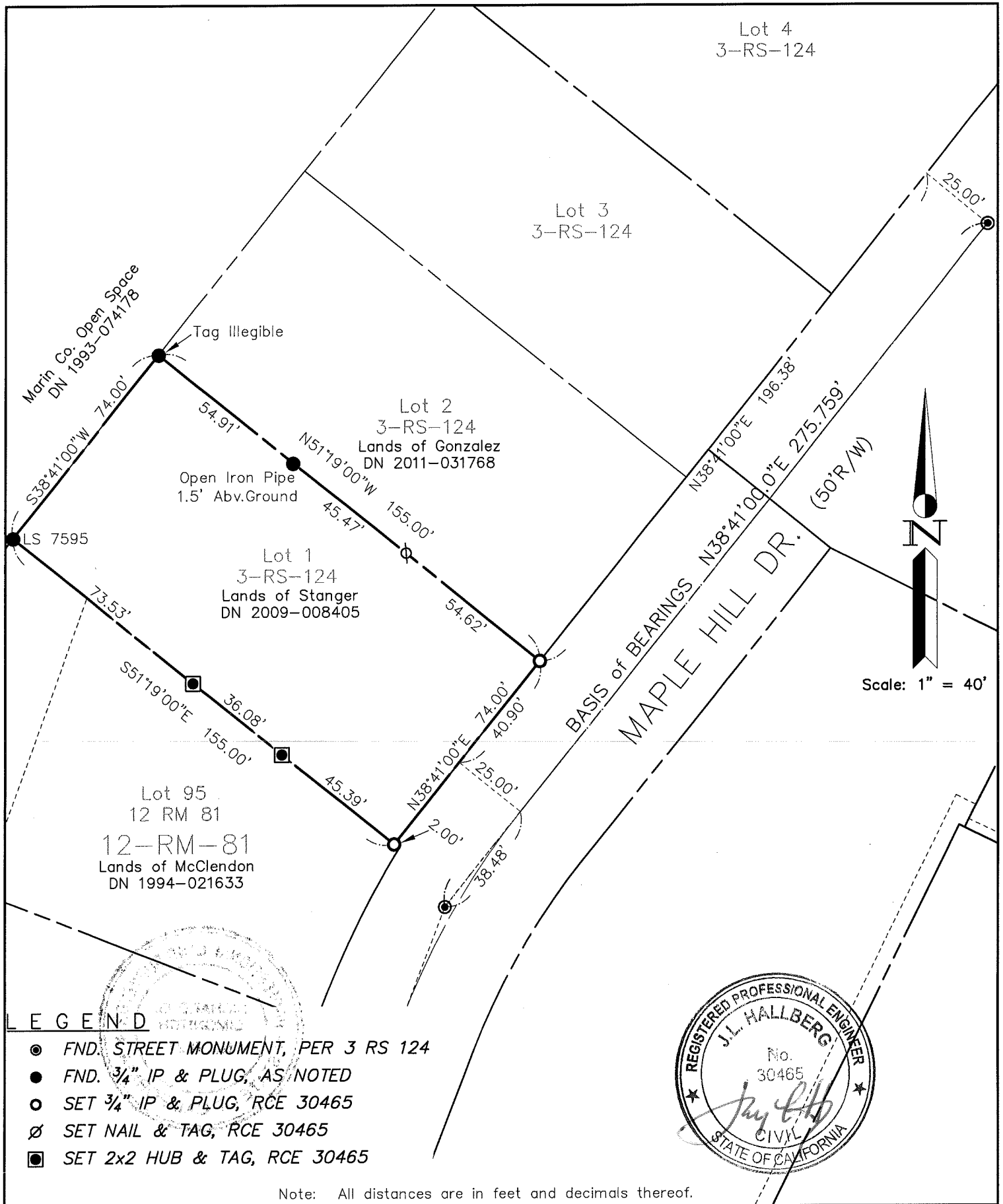
This Corner Record was received APRIL 25, 2016
and examined and filed JULY 8, 2016

Signed [Signature] P.L.S. or R.C.E. No. 7821

Title County Surveyor



County Surveyor's Comment _____

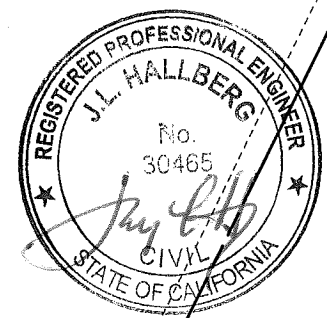


Scale: 1" = 40'

LEGEND

- FND. STREET MONUMENT, PER 3 RS 124
- FND. 3/4" IP & PLUG, AS NOTED
- SET 3/4" IP & PLUG, RCE 30465
- ∅ SET NAIL & TAG, RCE 30465
- SET 2x2 HUB & TAG, RCE 30465

Note: All distances are in feet and decimals thereof.



SHEET	1	OF	1
SCALE:	1" = 40'	DESIGN:	EDL
DATE:	Apr 2016	DRAWN:	EDL
FILE:	2016-037	CHECKED:	J.L.H
2016-037\DWG\2016-037-BASE,COR-REC			

J.L. ENGINEERING
 CIVIL ENGINEERS-LAND SURVEYORS
 1539 4th ST., SAN RAFAEL, CA. 94901 (415) 457-6647

Corner Record
 Lands of Stanger - 49 Maple Hill Dr.
 APN 165-093-22, San Rafael, Marin County, CA