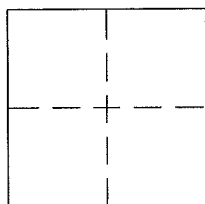


# CORNER RECORD

Document Number A.P.N. 165-093-12City of SAN RAFAELCounty of MARIN, CaliforniaBrief Legal Description LOT 95 AS SHOWN ON THE "MAP OF TWELVE OAK HILL UNIT THREE"  
FILED JULY 8, 1964 IN VOLUME 12 OF MAPS AT PAGE 81, MARIN COUNTY RECORDS

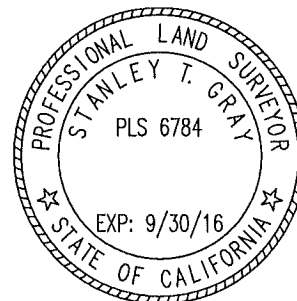
## CORNER TYPE

Government Corner ☐ Control ☐  
Meander ☐ Property ☒  
Rancho ☐ Other ☐  
Date of Survey 6/7/2015

## COORDINATES (Optional)

N. \_\_\_\_\_  
E. \_\_\_\_\_  
Zone \_\_\_\_\_ NAD27 ☐ NAD83 ☐  
NAD83 Epoch \_\_\_\_\_  
Elev. \_\_\_\_\_  
Vert. Datum: NGVD29 ☐ NAVD88 ☐  
Meas. Units: Metric ☐ Imperial ☒Corner - Left as found ☐ Found and tagged ☐ Established ☒ Reestablished ☐ Rebuilt ☐Identification and type of corner found: Evidence used to identify or procedure used to establish or reestablish the corner:  
SEE PAGE 2A description of the physical condition of the monument as found and as set or reset:  
SEE PAGE 2

## SURVEYOR'S STATEMENT

This Corner Record was prepared by me or under my direction in conformance with  
the Land Surveyor's Act on 3/21 2016Signed [Signature] P.L.S. or R.C.E. No. 6784

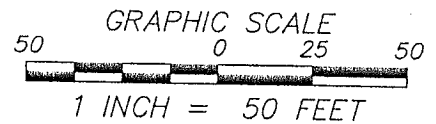
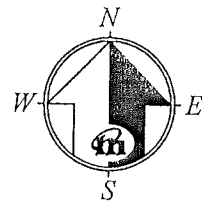
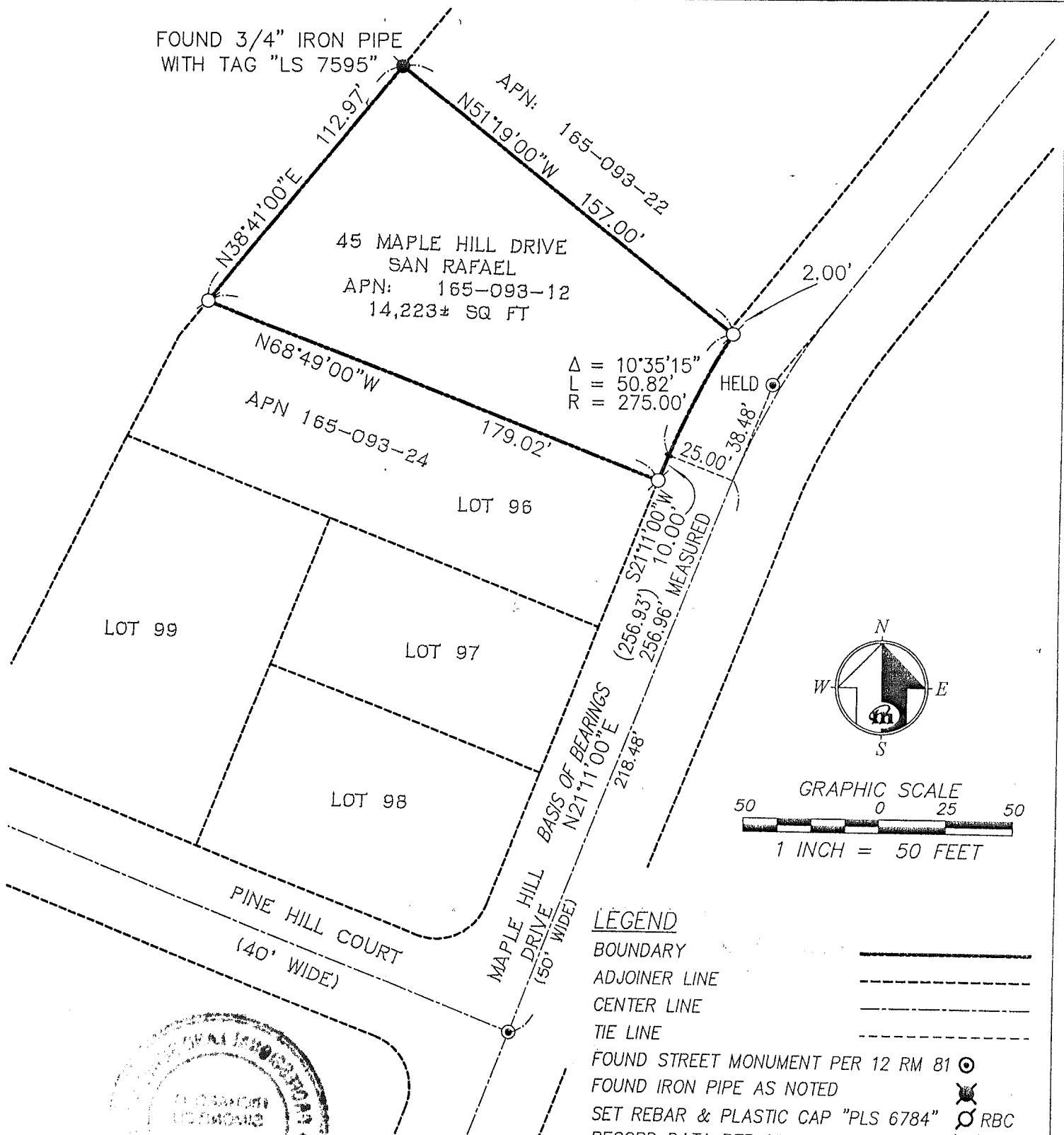
## COUNTY SURVEYOR'S STATEMENT

This Corner Record was received MARCH 23, 2016  
and examined and filed MAY 18, 2016Signed [Signature] P.L.S. or R.C.E. No. 7821Title County Surveyor

County Surveyor's Comment \_\_\_\_\_



FOUND 3/4" IRON PIPE  
WITH TAG "LS 7595"



### LEGEND

BOUNDARY  
ADJOINER LINE  
CENTER LINE  
TIE LINE

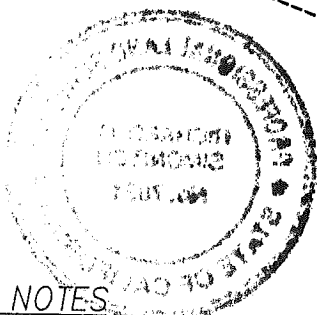
FOUND STREET MONUMENT PER 12 RM 81  
FOUND IRON PIPE AS NOTED  
SET REBAR & PLASTIC CAP "PLS 6784"  
RECORD DATA PER 12 RM 81

### BASIS OF BEARINGS

THE BEARING NORTH 21°11'00" EAST OF THE CENTERLING  
OF MAPLE HILL DRIVE AS SHOWN ON 12 RM 81 WAS  
USED AS THE BASIS OF BEARINGS AS SHOWN HEREON.

### GENERAL NOTES

1. DISTANCES ARE IN FEET AND DECIMALS THEREOF.
2. ALL DISTANCES: (RECORD) = MEASURED, UNLESS OTHERWISE NOTED.
3. EASEMENTS NOT SHOWN



**MERIDIAN SURVEYING**  
ENGINEERING, INC.

2958 VAN NESS AVE  
SAN FRANCISCO, CA 94109  
(415) 440-4131

777 GRAND AVE #202  
SAN RAFAEL, CA 94901  
(415) 456-5450