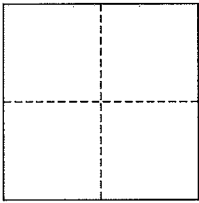


CORNER RECORD

City of San Rafael

Document Number AP# 165-031-01
County of Marin, California

Brief Legal Description Lot 36, 10 RM 60



CORNER TYPE

Government Corner Control
Meander Property
Rancho Other
Date of Survey _____

COORDINATES (Optional)

N. _____
E. _____
Zone _____ NAD27 NAD83
NAD83 Epoch _____
Elev. _____
Vert. Datum: NGVD29 NAVD88
Meas. Units: Metric Imperial

Corner- Left as found Found and tagged Established Reestablished Rebuilt

Identification and type of corner found: Evidence used to identify or procedure used to establish or reestablish the corner:
Found original Standard Street Mons, per 10 RM 60

A description of the physical condition of the monument as found and as set or reset: All Property Corners and Property Line points were set as shown hereon, per 10 RM 60

SURVEYOR'S STATEMENT

This corner Record was prepared by me or under my direction in conformance with the Land Surveyor's Act on 7/29/2013

Signed [Signature] P.L.S. or R.C.E. No. 30465

COUNTY SURVEYOR'S STATEMENT

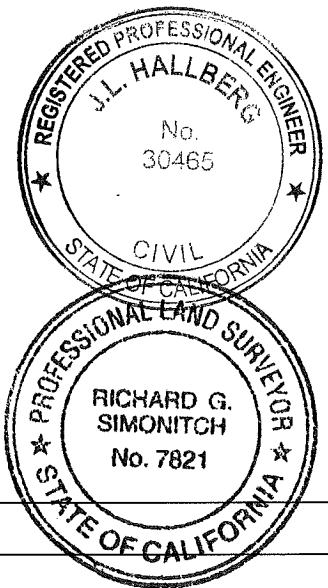
This Corner Record was received AUG. 1, 2013

and examined and filed AUGUST 8, 2013

Signed [Signature] P.L.S. or R.C.E. No. 7821

Title DEPUTY CO. SURVEYOR

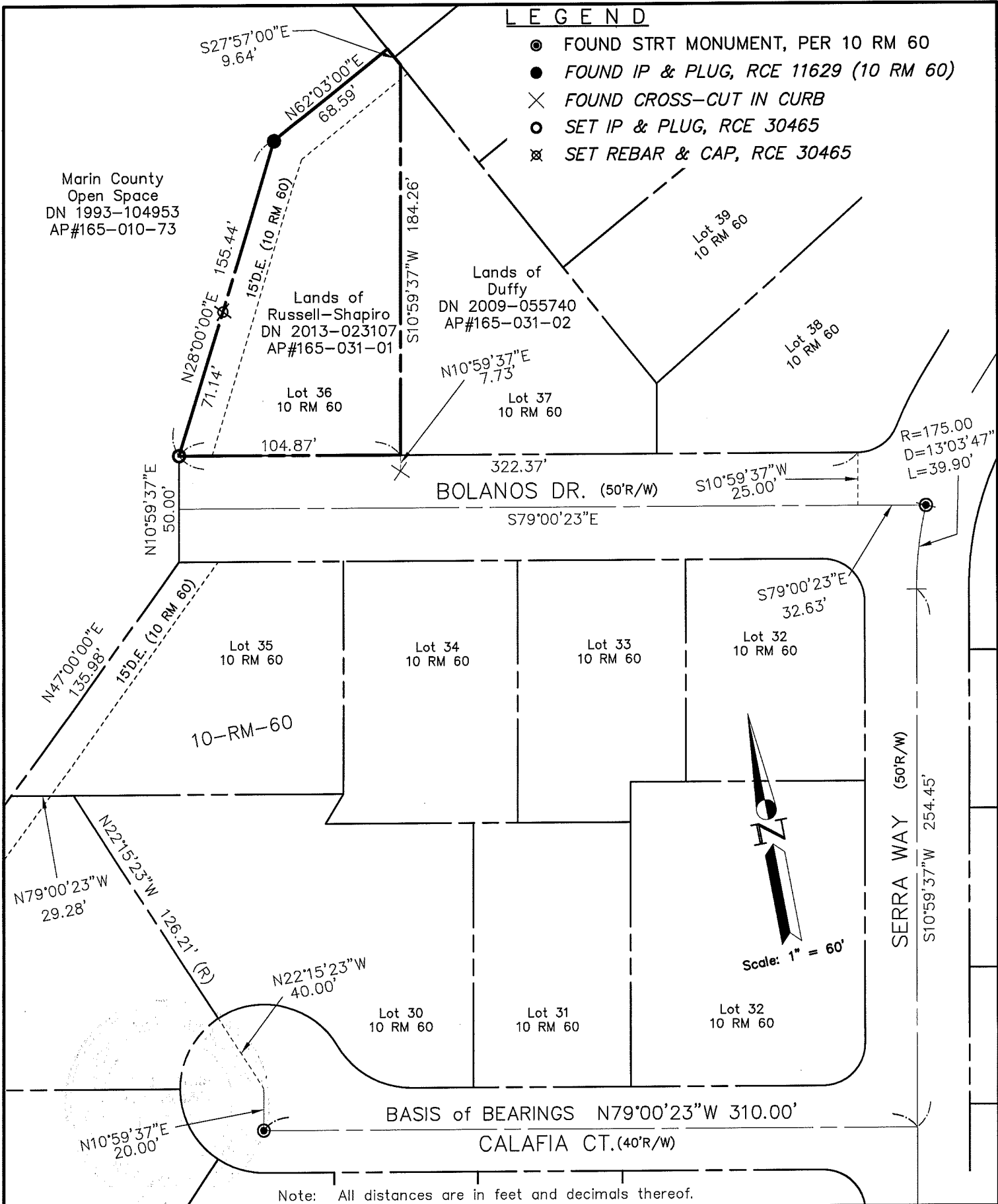
County Surveyor's Comment _____



LEGEND

- FOUND STRT MONUMENT, PER 10 RM 60
- FOUND IP & PLUG, RCE 11629 (10 RM 60)
- × FOUND CROSS-CUT IN CURB
- SET IP & PLUG, RCE 30465
- ⊗ SET REBAR & CAP, RCE 30465

Marin County
Open Space
DN 1993-104953
AP#165-010-73



SHEET	1	OF	1
SCALE:	1" = 60'	DESIGN:	PR
DATE:	Jun 2013	DRAWN:	PR
FILE:	2013-039	CHECKED:	J.L.H

2013-039\DWG\13-039-BASE,COR-REC

J.L. ENGINEERING
 CIVIL ENGINEERS-LAND SURVEYORS
 1539 4th ST., SAN RAFAEL, CA. 94901 (415) 457-6647

Corner Record
 Lands of Russell-Shapiro - 30 Bolanos Dr.
 APN 165-031-01, San Rafael, Marin County, CA