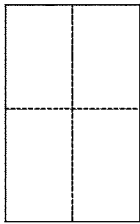


CORNER RECORDDocument Number 164-550-27City of San RafaelCounty of Marin, CaliforniaBrief Legal Description Lot 49, Las Gallinas Ranch, Filed in Book 19 of Records Maps
at Page 70.**CORNER TYPE**

Government Corner ☐ Control ☐
Meaneder ☐ Property ☒
Rancho ☐ Other ☐
Date of Survey May 2, 2013

COORDINATES (Optional)

N. _____
E. _____
Zone _____ NAD27 NAD83
NAD83 Epoch _____
Elev. _____
Vert. Datum: NGVD29 NAVD88
Meas. Units: Metric Imperial

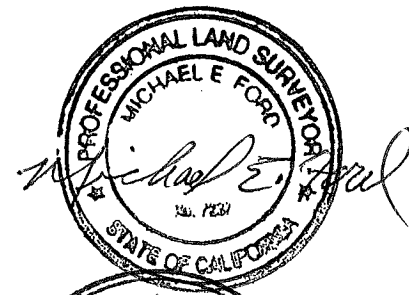
Corner – Left as found ☐ Found and tagged ☐ Established ☐ Reestablished ☒ Rebuilt ☐

Identification and type of corner found: Evidence used to identify or procedure used to establish or reestablish the corner:

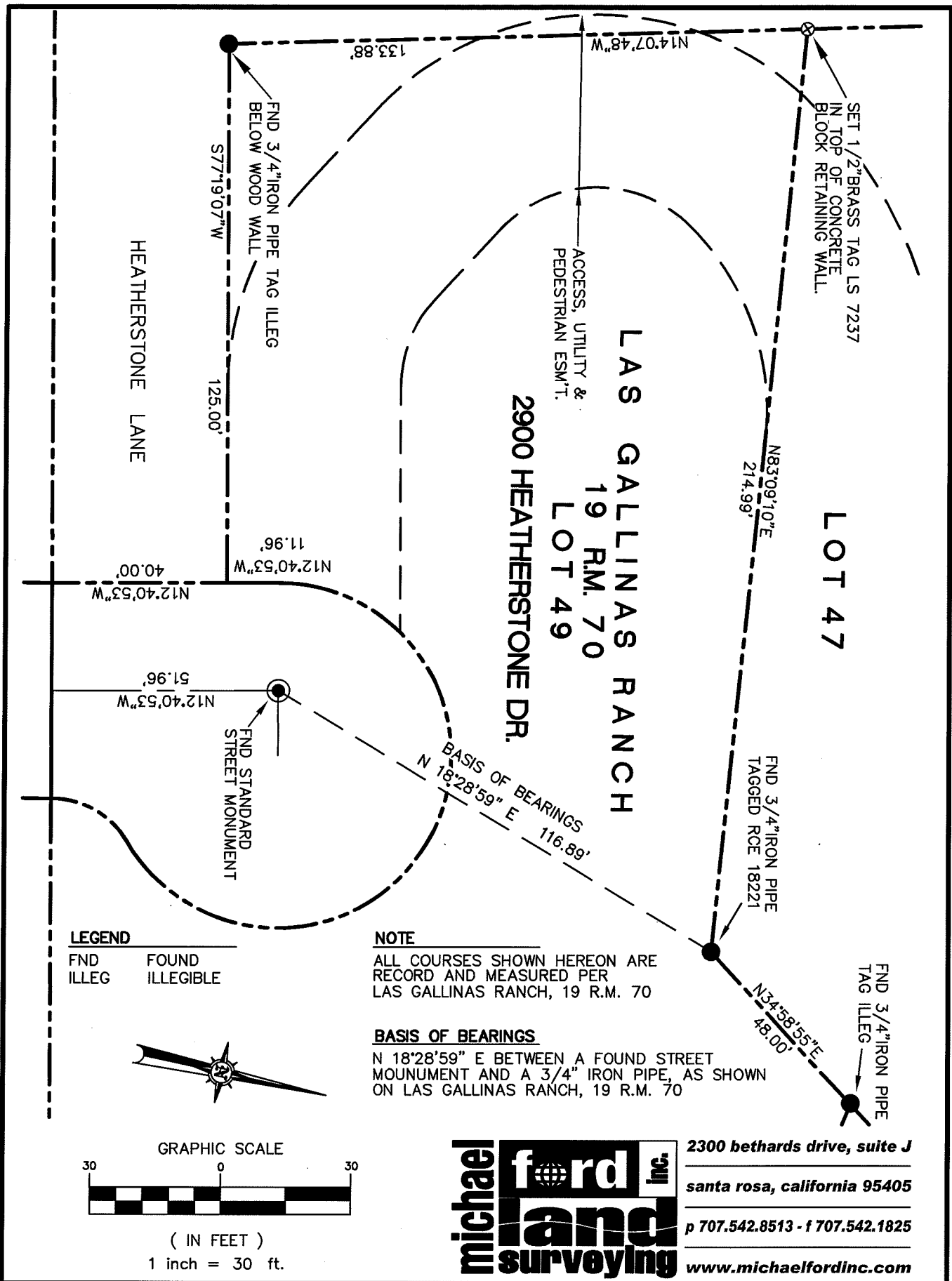
Found original monuments from Las Gallinas Ranch were used to reestablish
the northwesterly corner of Lot 49 of said map.

A description of the physical condition of the monument as found and as set or reset: 1/2" brass tag, LS 7237**SURVEYOR'S STATEMENT**

This Corner Record was prepared by me or under my direction in conformance with
the Land Surveyor's Act on MAY 21 2013

Signed Michael E. Ford P.L.S. or R.C.E. No. 7237**COUNTY SURVEYOR'S STATEMENT**This Corner Record was received AUGUST 13, 2013and examined and filed OCTOBER 1, 2013Signed Richard G. Simonitch P.L.S. or R.C.E. No. 7821Title DEPUTY CO. SURVEYOR

County Surveyor's Comment



LEGEND

FND FOUND
ILLEG ILLEGIBLE

NOTE

ALL COURSES SHOWN HEREON ARE
RECORD AND MEASURED PER
LAS GALLINAS RANCH, 19 R.M. 70

BASIS OF BEARINGS

N 18°28'59" E BETWEEN A FOUND STREET
MOUNMENT AND A 3/4" IRON PIPE, AS SHOWN
ON LAS GALLINAS RANCH, 19 R.M. 70



GRAPHIC SCALE



(IN FEET)

1 inch = 30 ft.

michael ford inc.
land surveying

2300 bethards drive, suite J

santa rosa, california 95405

p 707.542.8513 - f 707.542.1825

www.michaelfordinc.com