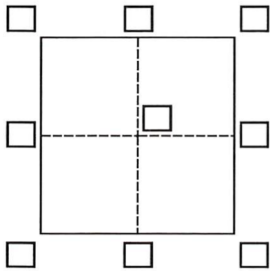


# CORNER RECORD

Agency Index

DPK# 21-044

Document Number 164-540-13

City of San Rafael County of Marin, CaliforniaBrief Legal Description APN 164-540-13, Lot 13, Las Gallinas Ranch, 19 RM 70, M.C.R.**CORNER TYPE**

Government Corner ☐ Control ☐  
Meander ☐ Property ☒  
Rancho ☐ Other ☐

Date of Survey October 30, 2020**COORDINATES (Optional)**N.                      E.                     Elevation                     Units ☒ Metric ☐ U.S. Survey Foot ☒Horizontal Datum                     Zone                      Epoch Date                     Vertical Datum                     ☐ Complies with Public Resources Code §§8801-8819☐ Complies with Public Resources Code §§8890-8902PLS Act Ref.: ☒ 8765(d) ☐ 8771 ☐ 8773 ☐ Other:

Corner/  
Monument: ☒ Left as found ☐ Established ☐ Rebuilt ☐ Pre-Construction  
☐ Found and tagged ☐ Reestablished ☐ Referenced ☐ Post-Construction

Narrative of corner identified and monument as found, set, reset, replaced, or removed:

☒ See sheet #2 for description(s):

Found Centerline Monuments (2" brass disc punched), along Blackstone Drive as shown on Record Map 17-90, sheet 7 of 13, found monuments to reestablish the most westerly, northerly, easterly and southeasterly boundary of above mentioned lot 13.

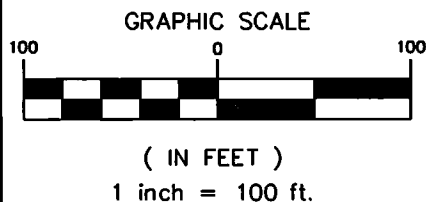
**SURVEYOR'S STATEMENT**

This Corner Record was prepared by me or under my direction in conformance with

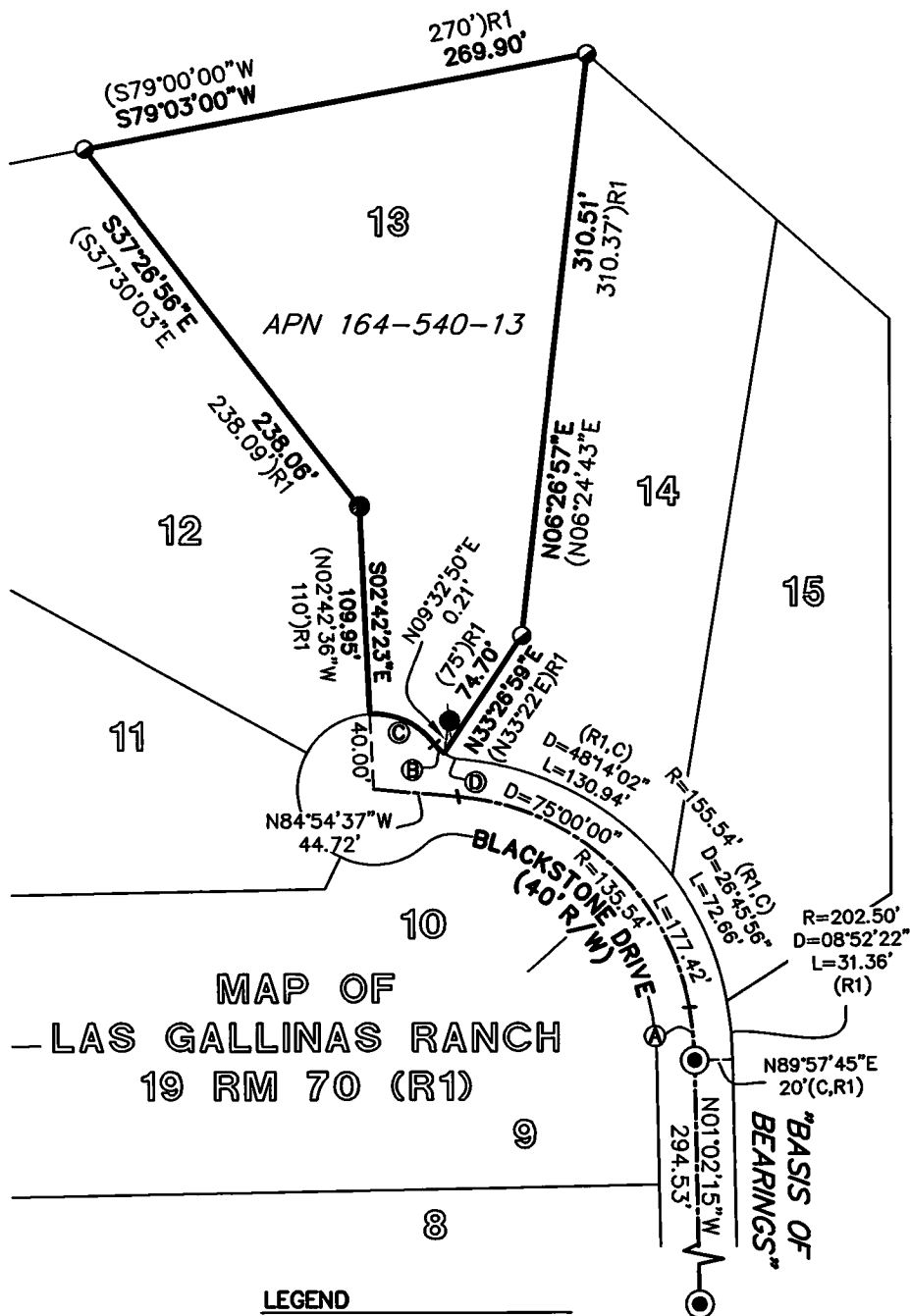
the Professional Land Surveyors' Act on November 5, 2020Signed Michael E. Ford P.L.S. or P.C.S. No. LS7237**COUNTY SURVEYOR'S STATEMENT**This Corner Record was received FEB. 24, 2021and examined and filed MAY 19, 2021Signed T. K. Park P.L.S. or P.C.S. No. 8176Title COUNTY SURVEYOR

County Surveyor's Comment





CURVE DATA	
Ⓐ	R=182.50' D=08°52'22" L=28.26' (R1)
Ⓑ	R=20.00' D=19°54'46" L=6.95' (R1)
Ⓒ	R=40.00' D=55°59'24"(C) L=39.09' (R1)
Ⓓ	R=20.00' D=28°16'37" L=9.87' (R1)

**BASIS OF BEARINGS**

N 01°02'15" W BETWEEN FOUND CENTERLINE MONUMENTS AS SHOWN ON MAP OF "LAS GALLINAS RANCH", 19 RM 70, M.C.R.

**NOTES:**

ALL DISTANCES SHOWN ARE IN FEET AND DECIMALS THEREOF.

ALL COURSES SHOWN HEREON ARE RECORD AND MEASURED PER MAP OF LAS GALLINAS RANCH 19 R.M. 70, MARIN COUNTY RECORDS, UNLESS OTHERWISE NOTED.

THE NOTED DISCREPANCIES ARE MINOR AND WOULD NOT MATERIALLY EFFECT THE BOUNDARY LOCATION.

**LEGEND**

- ⊙ FOUND CL STREET MONUMENT, 2"BRASS DISC, PUNCHED, RCE 18221
- FOUND 1/2" IRON PIPE, TAG ILLEG.
- FOUND 3/4" IRON PIPE, NO TAG (POR)
- FOUND 3/4" IRON PIPE, BRASS TAG RCE 18221
- POR POINT OF ROTATION (PIPE FOUND BENT)
- (R,C) RECORD AND CALCULATED

**michael ford inc.**  
**land surveying**

2300 bethards drive, suite J  
santa rosa • california 95405  
p 707.542.8513 - f 707.542.1825  
www.michaelfordinc.com